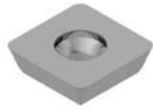


Inserts

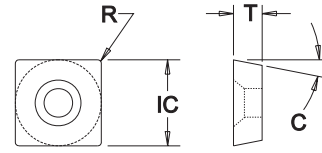
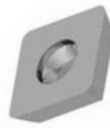
Conventional

SPEW Type

for "240" Series cutters



Flat Face Geometry



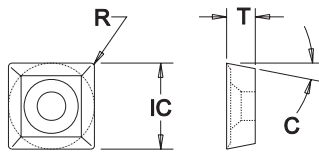
Insert Dimensional & Grade Specifications

Insert Number	IC	T	R	C	Coated Grades				Uncoated Grades	Silicon Nitride
					586XRm	606jRm	LT-2366	LT-5565	LTC-10	LTC-1200
SPEW-432W820	0.500	0.188	0.032	11°						●

SPEX Type



for "205, 222, 225, 245, 540" Series

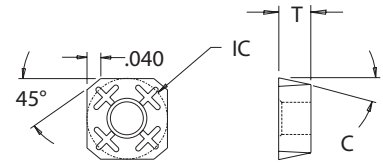


20° Dish Face Geometry

SPEX-32.5A4M_



for "229" Series



Flat Face Geometry

Insert Dimensional & Grade Specifications

Insert Number	IC	T	R	C	Geometry	Coated Grades					Uncoated Grades	
						586XRm	606jRm	LT-40	LT-5565	LT-2366	LTC-14	LTC-10
SPEX-221	0.250	0.125	0.015	11°	20° Dish	●●●●	●				●	●●●
SPEX-222	0.250	0.125	0.031	11°	20° Dish	●●●●	●				●	●●●
SPEX-32.52	0.375	0.156	0.031	11°	20° Dish	●●●●	●				●	●●
SPEX-32.52B	0.375	0.156	0.031	11°	20° Dish		●	●				
SPEX-32.52F	0.375	0.156	0.031	11°	20° Dish	●●●●			●			
SPEX-32.5A4M	0.375	0.156	0.040 Flat	11°	Flat	●●●●	●					●●
SPEX-32.52A4MW515	0.375	0.156	0.040 Flat	11°	Flat				●			
SPEX-432	0.500	0.188	0.032	11°	20° Dish	●●●●	●					●●
SPEX-432B	0.500	0.188	0.032	11°	20° Dish		●					
SPEX-432FA	0.500	0.188	0.032	11°	20° Dish					●●		●●
SPEX-432FW515B	0.500	0.188	0.032	11°	20° Dish				●			

● All Materials

● Cast Iron

● Hardened Materials

● Steel

● Aluminum / Non-Ferrous

● Stainless Steel

● Heat Resistant Super Alloys



Index

Specials

Inserts

General

Cavity Mold

Gray Iron

PCD / CBN

Slotters

Technical Data

Holders