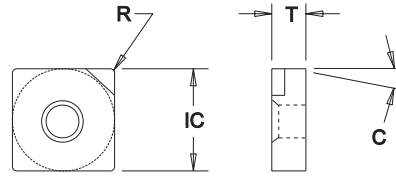


Inserts

PCD/CBN

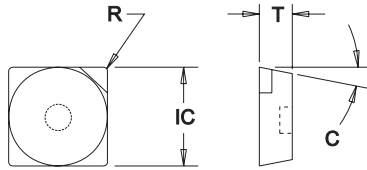
SNMA Type



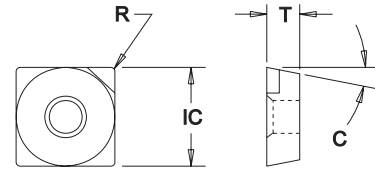
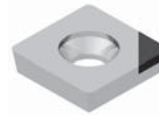
PCD / CBN Insert Dimensional & Grade Specifications

Insert Number	IC	T	R	C	PCD Grades			CBN Grades			
					LTC-130	LTC-120	LTC-110	LTC-270	LTC-260	LTC-220	LTC-200
SNMA-32	0.375	0.126	Specify	0°			●				● ●
SNMA-43	0.500	0.188	Specify	0°			●				● ●
SNMA-53	0.625	0.188	Specify	0°			●				● ●

SPCA Type



SPCB Type



PCD / CBN Insert Dimensional & Grade Specifications

Insert Number	IC	T	R	C	PCD Grades			CBN Grades			
					LTC-130	LTC-120	LTC-110	LTC-270	LTC-260	LTC-220	LTC-200
SPCA-422	0.500	0.126	0.31	11°			●				
SPCB-422	0.500	0.126	0.31	11°			●				

● All Materials

● Cast Iron

● Hardened Materials

● Steel

● Aluminum / Non-Ferrous

● Stainless Steel

● Heat Resistant Super Alloys

