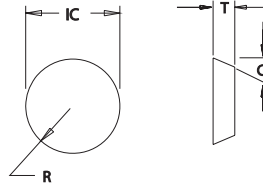


Inserts

Conventional

REC Type



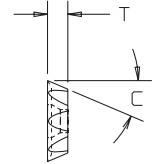
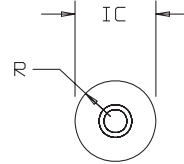
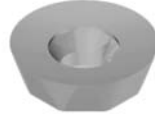
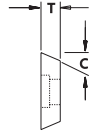
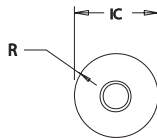
Insert Dimensional & Grade Specifications

Insert Number	IC	T	R	C	Coated Grades				Uncoated Grades		
					586XRm	606jRm	LT-50	LT-40	LTC-83	LTC-14	LTC-10
REC-63	0.750	0.188	0.375	20°	●●●●	●					
REC-63W520	0.750	0.188	0.375	20°	●●●	●					

RECH Type

for "255, XR" Series cutters

RECH-10F Type



Flat Face

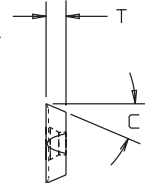
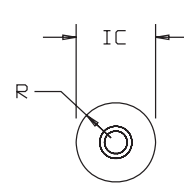
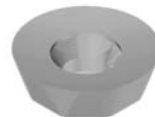
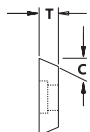
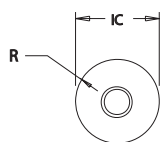
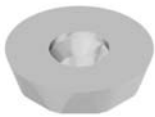
+10° Dished Face

Insert Dimensional & Grade Specifications

Insert Number	IC	T	R	C	Coated Grades				Uncoated Grades		
					586XRm	606jRm	LT-50	LT-40	LTC-21	LTC-14	LTC-10
RECH-43-10F	0.500	0.188	0.250	23°	●●●						●●
RECH-43W520	0.500	0.188	0.250	23°	●●	●					
RECH-53-10F	0.625	0.188	0.312	23°	●●●	●					
RECH-53W520	0.625	0.188	0.312	23°	●●	●		●			●
RECH-63-10F	0.750	0.188	0.375	23°	●●●●	●		●	●●●		●●●●
RECH-63W520	0.750	0.188	0.375	23°	●●	●		●			●●●

RSECH Type

for "356" Series cutters



Flat Face

+10° Dished Face

Insert Dimensional & Grade Specifications

Insert Number	IC	T	R	C	Coated Grades				Uncoated Grades		
					586XRm	606jRm	LT-50	LT-40	LTC-21	LTC-14	LTC-10
RSECH-43-10F	0.500	0.188	0.250	23°	●●●						●●
RSECH-43W520	0.500	0.188	0.250	23°	●●	●					●●●

● All Materials

● Cast Iron

● Hardened Materials

● Steel

● Aluminum / Non-Ferrous

● Stainless Steel

● Heat Resistant Super Alloys