

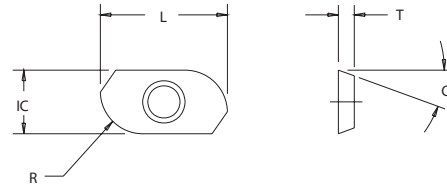
# Inserts

# Conventional

## LDEB-332 Type



## LEEB-332 Type

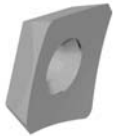


for "BNS" Series cutters

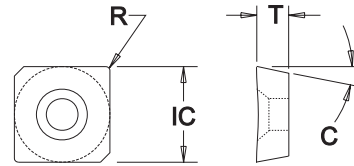
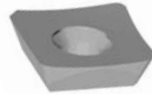
Insert Dimensional & Grade Specifications

Insert Number	IC	L	T	R	C	Coated Grades					Uncoated Grades			
						586XRm	606jRm	LT-50	LT-45	LT-40	LTC-83	LTC-14	LTC-10	
LDEB-332-20	0.375	0.75	0.126	0.312	16°				●	●			●	●
LDEB-332-20J	0.375	0.75	0.126	0.312	16°									
LDEB-332-20B	0.375	0.75	0.126	0.312	16°			●	●	●				
LEEB-332-16	0.375	0.75	0.126	0.250	20°	●	●	●		●			●	●
LEEB-332-16J	0.375	0.75	0.126	0.250	20°									
LEEB-332-16B	0.375	0.75	0.126	0.250	20°			●	●	●				

## LECH Type



for "XR90" Series cutters



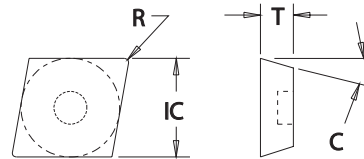
Insert Dimensional & Grade Specifications

Insert Number	IC	T	R	C	Coated Grades					Uncoated Grades				
					586XRm	606jRm	LT-50	LT-45	LT-40	LTC-21	LTC-14	LTC-10		
LECH-534-10F	0.625	0.188	0.062	23°	●	●	●							

## MECA Type



for "HPM, 233" Series cutters



Insert Dimensional & Grade Specifications

Insert Number	IC	T	R	C	Coated Grades				Uncoated Grades			
					586XRm	606jRm	LT-50	LT-40	LTC-14	LTC-21	LTC-10	
MECA-436J	0.500	0.188	0.093	20°							●	
MECA-530J	0.625	0.188	0.000	20°							●	
MECA-531J	0.625	0.188	0.016	20°							●	
MECA-532	0.625	0.188	0.031	20°							●	
MECA-532J	0.625	0.188	0.031	20°							●	
MECA-533J	0.625	0.188	0.047	20°							●	
MECA-534J	0.625	0.188	0.062	20°							●	
MECA-631J	0.750	0.188	0.016	20°							●	
MECA-632J	0.750	0.188	0.031	20°							●	
MECA-634J	0.750	0.188	0.062	20°							●	
MECA-638J	0.750	0.188	0.125	20°							●	

● All Materials

● Cast Iron

● Hardened Materials

● Steel

● Aluminum / Non-Ferrous

● Stainless Steel

● Heat Resistant Super Alloys



Index

Specials

Inserts

General

Cavity Mold

Gray Iron

PCD / CBN

Slotters

Technical Data

Holders