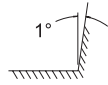
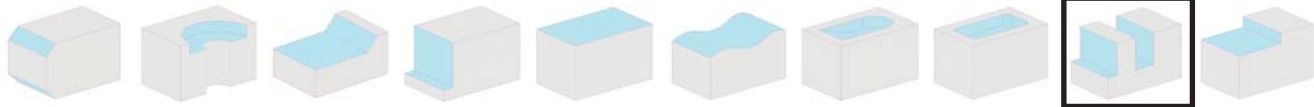
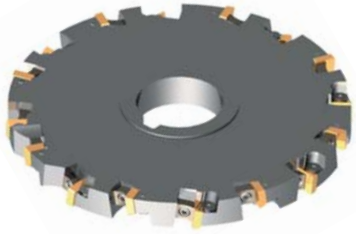


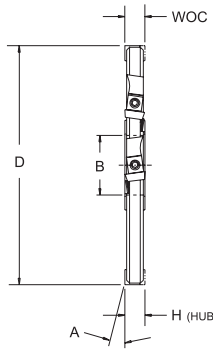
# GXS Series



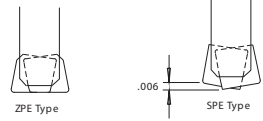
## Slotting Cutter .375 Insert



• Adjustable Widths



8° Pos Axial    Pos Radial    0°45' Dish



• Use .375 ZPE insert for flat bottom

### GXS Series - Dimensional Specifications

Product Number	D	B	H	A	WOC	Insert	Lock	Teeth	Weight
4GXS6-5H	4.00	1.25	.375	0°45'	.380-.437	SPE-32__	3502-0833-5000 / 5001	8	1.00
5GXS6-6H	5.00	1.50	.375	0°45'	.380-.437	SPE-32__	3502-0833-5000 / 5001	10	1.50
6GXS6-6H	6.00	1.50	.375	0°45'	.380-.437	SPE-32__	3502-0833-5000 / 5001	12	2.00
8GXS6-8H	8.00	2.00	.375	0°45'	.380-.437	SPE-32__	3502-0833-5000 / 5001	16	4.50
10GXS6-8H	10.00	2.00	.375	0°45'	.380-.437	SPE-32__	3502-0833-5000 / 5001	20	7.00
12GXS6-10H	12.00	2.50	.375	0°45'	.380-.437	SPE-32__	3502-0833-5000 / 5001	24	10.50
4GXS7-5H	4.00	1.25	.437	0°45'	.437-.500	SPE-32__	1602A	8	1.20
5GXS7-6H	5.00	1.50	.437	0°45'	.437-.500	SPE-32__	1602A	10	2.00
6GXS7-6H	6.00	1.50	.437	0°45'	.437-.500	SPE-32__	1602A	12	2.50
8GXS7-8H	8.00	2.00	.437	0°45'	.437-.500	SPE-32__	1602A	16	5.50
10GXS7-8H	10.00	2.00	.437	0°45'	.437-.500	SPE-32__	1602A	20	8.50
12GXS7-10H	12.00	2.50	.437	0°45'	.437-.500	SPE-32__	1602A	24	13.00
4GXS8-5H	4.00	1.25	.500	0°45'	.500-.562	SPE-32__	1602A	8	1.50
5GXS8-6H	5.00	1.50	.500	0°45'	.500-.562	SPE-32__	1602A	10	2.50
6GXS8-6H	6.00	1.50	.500	0°45'	.500-.562	SPE-32__	1602A	12	3.75
8GXS8-8H	8.00	2.00	.500	0°45'	.500-.562	SPE-32__	1602A	16	6.50
10GXS8-8H	10.00	2.00	.500	0°45'	.500-.562	SPE-32__	1602A	20	10.00
12GXS8-10H	12.00	2.50	.500	0°45'	.500-.562	SPE-32__	1602A	24	14.50

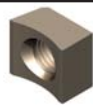
Insert  
I.C. x Thickness



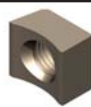
Insert Pg. 43



Insert Pg. 49



Insert Lock



Insert Lock



Lock Screw



Adjusting Screw



Lock Screw Wrench

.375 x .126

SPE-32\_\_

ZPE-32\_\_

1602A

3502-0833-5000 RH  
3502-0833-5001 LH

1449

1365-1

1557-PT6

### Machining Parameters

Material	SFPM	FPT	Primary	Secondary
Gray Cast Iron, Class 30	200-500	.002-.008	SPE-322 GR LT-45	SPE-322 GR LTC-83
Tool Steel, D2	250-350	.002-.008	SPE-322B GR LT-50	SPE-322 GR LT-40
Medium Alloy Steel	300-700	.002-.008	SPE-322 GR LT-40	SPE-322 GR LTC-14
Tool Steel, P20	300-700	.002-.008	SPE-322B GR LT-50	SPE-322 GR LT-40
Soft Alloy Steel	400-800	.002-.008	SPE-322 GR LT-40	SPE-322 GR LTC-14
Stainless Steel, 304, 316	200-500	.002-.008	SPE-322 GR LT-45	SPE-322 GR LTC-83

- Free cutting positive geometry designed for a broad range of workpiece materials
- High production design includes offset drive keys for multiple tool “gang” setups
- Engineered with generous chip gullets to ensure optimum chip evacuation
- Adjustable widths ensure infinite coverage between .380” and .562” in each GXS diameter
- Engineered for stability over a variety of applications