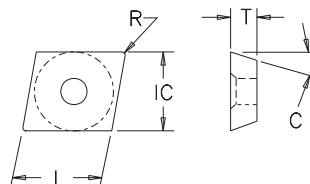
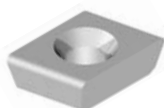


Inserts

Conventional

DPCB Type

for "EXSP" Series cutters



Index

Specials

Inserts

General

Cavity Mold

Gray Iron

PCD / CBN

Slotters

Technical Data

Holders

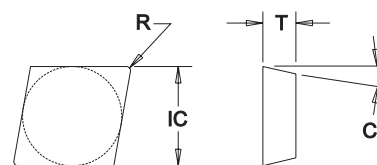
Insert Dimensional & Grade Specifications

Insert Number	IC	T	R	C	L	Coated Grades				Uncoated Grades			
						586XRm	606jRm	LT-50	LT-40	LTX	LTC-22	LTC-14	LTC-10
DPCB-32.145-1L	0.375	0.145	0.015	11°	0.500		●					●	●
DPCB-32.145-1R	0.375	0.145	0.015	11°	0.500		●					●	●
DPCB-323-2LB	0.375	0.188	0.015	11°	0.500			●●●	●				
DPCB-323-2RB	0.375	0.188	0.015	11°	0.500			●●●	●				

FPE-32 Type

FPE-43 Type

FPE-63 Type



for "GXSM, GXSMH, NXSM, EMX" Series cutters

Insert Dimensional & Grade Specifications

Insert Number	IC	T	R	C	Coated Grades				Uncoated Grades				
					586XRm	606jRm	LT-50	LT-40	LTC-83	LTC-21	LTC-14	LTC-10	
FPE-321B	0.375	0.126	0.015	11°				●					
FPE-322	0.375	0.126	0.031	11°						●●●		●	
FPE-322B	0.375	0.126	0.031	11°								●	
FPE-432	0.500	0.188	0.031	11°					●●●			●	
FPE-432B	0.500	0.188	0.031	11°								●	
FPE-632	0.750	0.188	0.031	11°					●●●			●	
FPE-632B	0.750	0.188	0.031	11°								●	
FPE-634	0.750	0.188	0.062	11°					●●●			●	
FPE-634B	0.750	0.188	0.062	11°								●	
FPE-634W515	0.750	0.188	0.062	11°				●					

● All Materials

● Cast Iron

● Hardened Materials

● Steel

● Aluminum / Non-Ferrous

● Stainless Steel

● Heat Resistant Super Alloys