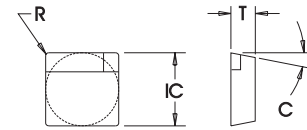
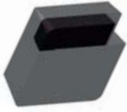


**0502-2802-0001 Type**

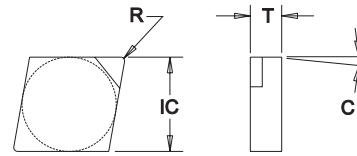
Finishing 35 RMS or better  
Wiper for superior finish



**PCD / CBN Insert Dimensional & Grade Specifications**

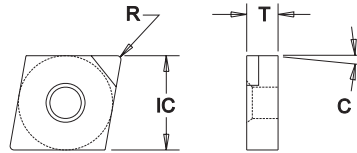
Insert Number	IC	T	R	C	PCD Grades			CBN Grades				
					LTC-130	LTC-120	LTC-110	LTC-270	LTC-260	LTC-220	LTC-200S	
0502-2802-0001	0.500	0.188	0.040	11°								● ●

**CNG Type**



Insert Number	IC	T	R	C	PCD Grades			CBN Grades				
					LTC-130	LTC-120	LTC-110	LTC-270	LTC-260	LTC-220	LTC-200	
CNG-422	0.500	0.126	0.031	0°			●					● ●
CNG-432	0.500	0.188	0.031	0°			●					● ●

**CNGA Type**



**PCD / CBN Insert Dimensional & Grade Specifications**

Insert Number	IC	T	R	C	PCD Grades			CBN Grades				
					LTC-130	LTC-120	LTC-110	LTC-270	LTC-260	LTC-220	LTC-200	
CNGA-43	0.500	0.188	Specify	0°			●					● ●

- All Materials
- Cast Iron
- Steel
- Stainless Steel
- Hardened Materials
- Aluminum / Non-Ferrous
- Heat Resistant Super Alloys