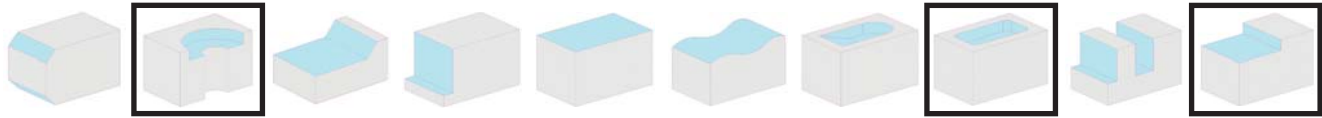
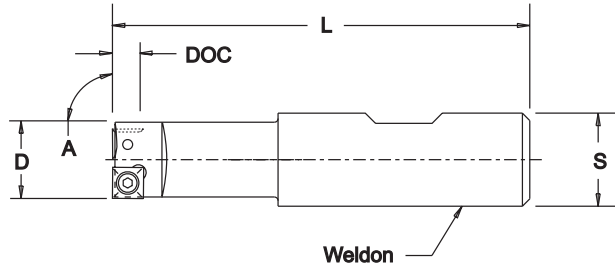


CEM Series



End Mills

0° Pos Axial 0° Pos Radial 90° Shoulder







• Center cutting configuration

CEM Series - Dimensional Specifications

Product Number	D	S	L	A	DOC	Insert	Teeth	Weight
0.5CEMRW2	.500	.500	2.78	90°	.200	LEEB-32__	1	.20
0.62CEMRW2.5	.625	.625	3.00	90°	.200	LDEB-32__	1	.25
0.75CEMRW3	.750	.750	3.25	90°	.200	SDEB-32__	1	.35
0.88CEMRW3.5	.875	.875	3.25	90°	.200	SPEB-32__	2 - (1) Eff.	.45
1.0CEMRW4	1.000	1.000	4.25	90°	.200	SPEB-32__	2 - (1) Eff.	.50

LEFT HAND cutters also available

Insert I.C. x Thickness				
	Insert Pg. 36	Insert Pg. 41	Insert Screw	Insert Screw Wrench
.375 x .126	LDEB-32__	SDEB-32__	3605-0001-0006	1557-TX10
.375 x .126		SPEB-32__	3605-0001-0005	1557-TX10
.375 x .126	LEEB-32__		3605-0001-0013	1557-TX10

Machining Parameters

Material	SFPM	FPT	Primary	Secondary
Gray Cast Iron, Class 30	200-500	.002-.006	__EB-321 GR LT-45	__EB -321 GR LTC-10
Ductile Iron	350-700	.002-.006	__EB-321 GR LT-40	__EB -321 GR LTC-14
Medium Alloy Steel	300-700	.002-.006	__EB-321 GR LT-40	__EB -321 GR LTC-14
Tool Steel, P20	300-700	.002-.006	__EB-321 GR LT-40	__EB -321 GR LTC-14
Soft Alloy Steel	400-800	.002-.006	__EB-321 GR LT-40	__EB -321 GR LTC-14

- Free cutting positive geometry accommodates a variety of workpiece materials
- Design allows ramping, plunge to depth of chip clearance and peripheral cuts
- Engineered for rigidity during plunging or channel cuts
- Simple screw insert mounting provides quick accurate indexing
- Small shank diameters make CEM ideal for use on all light duty machine tools