



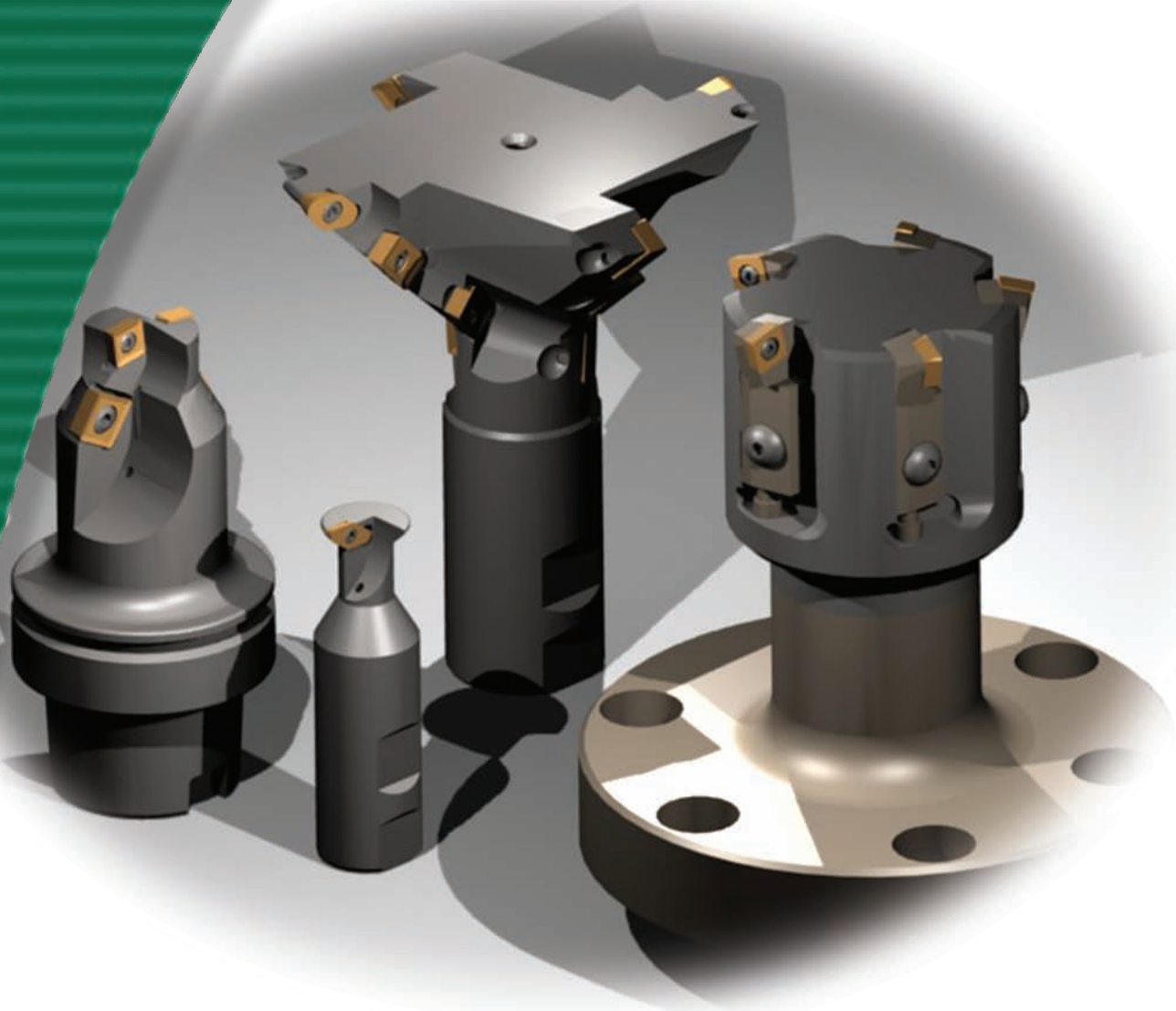
Since 1917

Standard and Application Designed Cutters and Inserts



Made in U.S.A.

Custom Tooling



obtain flyer



Scan QR Code
for more info

1-800-843-8376
www.lovejoytool.com

Product Listing	Page
Custom Tooling	2
Insert Coatings	4
Coated Carbide Grades	5 & 6
UnCoated Carbide Grades	7
Silicon Nitride & PCD & PCD Chip Control Geometry Grades	7
CBN & Coated CBN Sandwich Grades	8
Coated CBN Sandwich Style Inserts	9 thru 15
Coated CBN Sandwich Style Inserts - Grades, Tip Style, Honers	16
Coated CBN Sandwich Style Inserts - Application Ranges	17 & 18
PCD Chip Control Geometry Inserts	19 thru 28
PCD Chip Control Geometry Inserts - Speeds & Feeds	29
Applications	30
207 End Mills	31
217 Face Mills	32
207 & 217 Inserts	33
215 End Mills	34
215 Face Mills	35
218 Face Mills	36
215 & 218 Inserts	37
High Feed Milling	38
250 End Mills	39
250 Face Mills	40
250 Inserts	41
250 Application Parameters	42
651 Series Tooling	43
651 Face Mills	44
651 Inserts	45
XR4 & XR45 Series Tooling	46
XR4 End & Face Mills	47
XR45 End & Face Mills	48
XR4 & XR45 Inserts	49
XR90 End & Face Mills	50
XR90 Inserts	51
PCD End Mills - Composite Machining	52
PCD Composite End Mill Tooling	53
Special PCD Tooling	54
Mill Kits	55 thru 64
Notes	65 thru 67
Back Cover	68

AlTiN
TiCN PVD
TiAlN CVD
TiB₂ TiN
AlTiCVD
CVD-DIAMOND

GRADE	ANSI	ISO	Primary Application Range	Workpiece Materials
Coated Carbide				
586XRm	C1 - C2	S25 M30 - M20 K40 - K20	PVD TiAlN / AlTiN family of Coated Carbide, general purpose to high velocity milling applications on non-ferrous materials involving heavy to moderate shock. Superior edge strength and wear resistance.	Titanium based
				Nickel based
				Austenitic Stainless Steel
				Martensitic Stainless Steel
				PH Type Stainless Steel
588XRm	C2	K25 M20	PVD Advanced adhesion Supernitride Coated Carbide	Cast Iron
				Austenitic Stainless Steel
606jRm	C5 - C6	P30 - P15	PVD TiAlN / AlTiN family of Coated Carbide, general purpose milling of ferrous materials at normal to accelerated spindle velocities. Excellent impact resistance as well as superior wear characteristics.	Carbon Steel
				Alloyed Steel
				Tool Steel
				Stainless Steel
608jRm	C5 - C6	P40 - P30	Thick PVD Supernitride Coated Carbide with advanced adhesion. Ideal for roughing Cast and Alloy steels in high performance applications.	Cast Steel
				Alloyed Steel
902XRm	C5 - C6	P40 - P20	PVD TiAlN / AlTiN family of Coated, general purpose milling at normal to accelerated spindle velocities	Carbon Steel
				Alloyed Steel
				Tool Steel
904XRm	C2 - C3	M30 - M20	PVD TiAlN / AlTiN family of Coated, general purpose milling at normal to accelerated spindle velocities	Stainless Steel
908XRm	C1 - C2	N10 - N30 S25	PVD TiB ₂ Coated Carbide, offering superior lubricity for high velocity milling applications on non-ferrous materials.	Aluminum < 12% Silicon
LT-40	C5 - C6	P30 - P20 M20 - M10	TiN Coated Carbide, general purpose milling of moderate to tough steel and steel alloys. Excellent wear characteristics.	Carbon Steel
				Alloyed Steel
				Tool Steel
				Martensitic Stainless Steel
				PH Type Stainless Steel
LT-45	C1 - C2	S25 M30 - M20	PVD TiN Coated Carbide, specifically designed for a broad range of applications involving austenitic stainless steel and cast iron. Good heat and wear resistance.	Austenitic Stainless Steel
LT-50	C1 - C2 C5	M20 - M30 K20 - K30	CVD TiCN / TiC / TiN Coated Carbide, heavy metal removal to general purpose milling applications over a broad range of speeds and feeds. Superior impact and shock resistance combined with good wear resistance.	Carbon Steel
				Alloyed Steel
				Tool Steel
				Stainless Steel
				Cast Iron
LT-1475	C5 - C6 C1 - C2	P40 - P30 M20 - M10 N15 K30	PVD Multi-Coated Carbide, Multi-pupose grade best for gummy or stringy materials.	Carbon Steel
				Stainless Steel
				Non Ferrous
				Conditional use in Cast Iron
LT-2373B	C1 - C3	K25 - K15 M20 - M10	PVD Advanced adhesion, Supernitride Coated Carbide for all cast irons and Stainless Steel.	Cast Iron
				Austenitic Stainless Steel
				Martensitic Stainless Steel
				PH Type Stainless Steel
LT-4066	C5	P40 - P30	Multi-Coated Carbide MT-CVD, for roughing applications in Alloy & Forged Steel, with interrupted cuts at moderate speeds.	Alloyed Steel
				Forged Steel
LT-4073B	C5 - C6	P30 - P20	PVD Advanced adhesion, Supernitride Coated Carbide for all Steel.	Steel

Note:

Large Bold Grades = Most Common

GRADE	ANSI	ISO	Primary Application Range	Workpiece Materials
Coated Carbide				
LT-4081	C5 - C6	P10 - P30	Thick PVD super nitride coating, ideal for roughing of steels	Carbon Steel Alloyed Steel Forged Steel
LT-4581	C2, C5	M20, P30	Thick PVD super nitride coating, ideal for roughing of steels, higher impact resistance	Stainless Steel Alloyed Steel Forged Steel
LT-5565	C5	P40 - P30	Multi-Coated Carbide MT-CVD, for roughing applications in Alloy & Forged Steel, with interrupted cuts at moderate speeds.	Alloyed Steel Forged Steel
LT-7175	C5 - C6 C1 - C2	P40 - P30 M20 - M10 K30	PVD Multi-Coated Carbide, Multi-pupose general grade for Alloy Steel, Stainless and Cast Iron.	Alloyed Steel Stainless Steel Cast Iron
LT-8016	C2 - C3	M20 - M10 N20 K25 - K15 H10 S20	PVD Multi-Coated Carbide for Stainless and Cast Iron.	Austenitic Stainless Steel Non- Ferrous Gray Cast Iron Hard Steel Conditional use in Super Alloys
LT-8240			Intended for cutting edge which have high stresses, not limited to, but best for steels to 30 Rc, high cobalt content, lower to medium cutting speeds.	Steel Stainless Steel Cast Iron Heat Resistant Super Alloys
LT-9325	C5 - C6	P30 - P20 M20 - M10 K20 - K10	MT-CVD Multi-coating for steels at higher Cutting Speeds..	Steel Martensitic Stainless Steel Ductile Iron
Un-Coated Carbide				
LTC-10	C1 - C2	S30 M20 - M30 K40 - K30	Uncoated Carbide, heavy roughing applications on a variety of non-ferrous materials. Outstanding shock and impact resistance as well as excellent edge strength.	Titanium and Nickel based Austenitic Stainless Steel Cast Iron
LTC-14	C5 - C6	P40 - P30 M20 - M30	Uncoated Carbide, broad range of milling applications on moderate to tough steel and steel alloys. Excellent balance between wear characteristics and shock resistance.	Carbon Steel Alloyed Steel Tool Steel Martensitic Stainless Steel PH Type Stainless Steel
LTC-21	C2	N25 - N15 K20 - K10 S20 - S30	Uncoated Carbide, general purpose milling applications on all non-ferrous materials as well as some non-metallic material groups with good wear resistance.	Aluminum Cast Iron Titanium and Nickel based
LTC-22	C1	S40 - S25	Uncoated Carbide, milling applications involving tough or abrasive non-ferrous materials such as titanium or nickel based alloys.	Titanium and Nickel based

GRADE	ANSI	ISO	Primary Application Range	Workpiece Materials
Un-Coated Carbide				
M+	C5 - C6	P30 - P25	Uncoated Carbide, general purpose milling of moderate to tough steel and steel alloys. Excellent shock resistance.	Carbon Steel Alloyed Steel Tool Steel PH Type Stainless Steel
Silicon Nitride				
LTC-1200	C2	K25 - K15	General Purpose Silicon Nitride.	Gray Cast Iron
LTC-1500	C2	K20 - K10	Advanced high performance Silicon Nitride.	Gray Cast Iron
LT-150043	C2	K20 - K10	PVD coating, Advanced high performance Silicon Nitride.	Gray & Ductile Iron
PCD				
LTC-110	C4	N20 - N10	Smallest grain PCD, Excellent edge quality, Good abrasion, Fair impact, Excellent finish.	Aluminum
LTC-120	C4	N15 - N10	Small grain PCD, Good Edge quality, Excellent abrasion, Moderate impact, Good finish.	Copper Alloys Graphite & Graphite Composite
LTC-125	C4	N30 - N05	Bimodal Medium to Course grain size PCD, Highly abrasion resistance, Outstanding impact strength, Very good surface finish, Long tool life.	Metal Matrix Composite (MMC) Over 14% Silicon Al Alloys Fiberglass Fiberboard Wood Laminates
LTC-130	C4	N05 - N10	High Strength PCD for Interruption, Extremely high abrasion, High impact strength, Fair surface finish.	Metal Matrix Composite (MMC) Over 14% Silicon Al Alloys Bimetal (Cast iron/ Aluminum) Sintered Ceramics and Carbides
LTC-151	C4	N05	CVD Diamond coated product, Good finish, Applied over any shape geometry carbide, Required low cobalt content substrate.	Composite Graphite Fair Impact & Carbon Fiber
LTC-180	C4	N30 - N05	Bimodal particle sizes, Highly abrasion resistance, Outstanding impact strength, Very good surface finish, Long tool life.	Metal Matrix Composite (MMC) Over 14% Silicon Al Alloys Fiberboard Wood Laminates

Grades	PCD - Composition Performance	Application
Chip Breaker Inserts		
PDC	A fine grain PCD (Polycrystalline Diamond) for tight tolerances and good finish where a sharp edge is required.	Fine finishing and general purpose turning in low abrasive or low silicon content of non-ferrous metals and non-metallic materials.
PDC-S	A course grain PCD (Polycrystalline Diamond) for close tolerances where toughness and flank wear is required.	Finishing and general purpose turning or milling of medium to high content of abrasion or silicon reinforced materials.
TFC	A solid, single synthetic diamond crystal for extremely sharp cutting edge when extremely tight tolerances are required. Is the highest abrasion resistance and has maximum thermal conductivity.	Super finishing to roughing of all non-ferrous and non-metallic materials of abrasion or silicon reinforced material.

Note:

Large Bold Grades = Most Common

GRADE	ANSI	ISO	Primary Application Range	Workpiece Materials
CBN				
LTC-200	C2	K15 - K05 H25 - H30	High content CBN, Superior impact Strength, Good Abrasion resistance.	Gray Cast Iron Interrupted Hard Steel
LTC-205	C2	K05 - K15 H30	High content CBN, Superior impact strength, Higher abrasion resistance.	Gray Cast Iron Interrupted Hard Steel
LTC-220	C3	K05 - K10	Low % volume content CBN, Good toughness, Excellent abrasion resistance.	Finish Hard Steel turning
LTC-230	C2	K25 - K35 H30	Medium content CBN, Superior impact strength, Excellent abrasion resistance.	First choice for turning or milling Gray Iron Powder Metals Excellent for heavy machining of hard alloy steels
LTC-235	C2 - C3	K10 - K30 H30 - H35	High content CBN, Superior impact strength, Excellent abrasion resistance.	First choice for turning or milling Gray Iron Powder Metals Excellent for heavy machining of hard alloy steels
LTC-280	C1 - C2	K10 - K30 H15 - H35	Solid, high content CBN, Course grain structure, High fracture resistance, Excellent wear resistance.	Hard Cast Iron Hard Steel - interrupted cuts Powder Metals
LT-20021	C2	K15 - K05 H25 - H30	TiN coated, high content CBN, Superior impact strength, High abrasion resistance.	Gray Cast Iron Interrupted Hard Steel - easier identified wear land
LT-23021	C2	K25 - K35 H30	TiN coated, medium content CBN, Superior impact strength, Excellent abrasion resistance.	First choice for turning or milling Gray Iron Powder Metals Excellent for heavy machining of hard alloy steels - easier identified wear land
LT-28021	C1 - C2	K10 - K30 H15 - H35	TiN coated, Solid, high content CBN, Course grain structure, High fracture resistance, Excellent wear resistance.	Hard Cast Iron Hard Steel - interrupted cuts Powder Metals

LOVEJOY	ISO	CBN "Sandwich" - Composition Performance	Application
PBC-10	BH-C	Coated PcBN grade with a very high content of CBN (95%). Fine grain, higher wear resistance and toughness than PBC-10 in the HSC-range.	Gray cast iron (GG25) Sintered powdered alloys Super alloys
PBC-15	BH-C	Coated PcBN grade with high content of CBN (90%). Fine grain, high wear resistance and toughness at lower cutting speed than with PBC-10.	Nodular cast iron Gray cast iron Sintered powdered alloys Super alloys
PBC-25	BL-C	Coated PcBN grade with low content of CBN (65%). Super fine grain, very high wear resistance, compressive strength and toughness for hard turning with continuous cut.	Hard turning, dry + wet HRc = 48 - 62 ap = 0.001" - 0.016" Ra = 8 - 125 RMS
PBC-40	BL-C	Coated PcBN grade with low content of CBN (55%). Super fine grain, very high wear resistance, compressive strength and toughness for hard turning with continuous to extremely interrupted cut.	Hard turning, dry + wet HRc = 48 - 65 ap = 0.002" - 0.020" Ra = 4 - 125 RMS

CBN Sandwich Inserts

Allow 1 week lead time

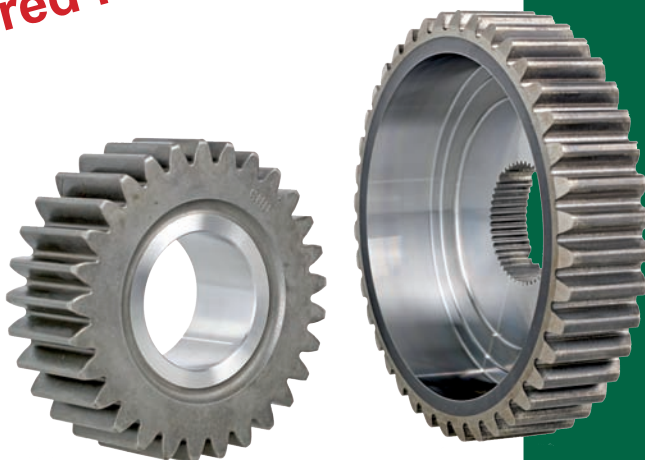
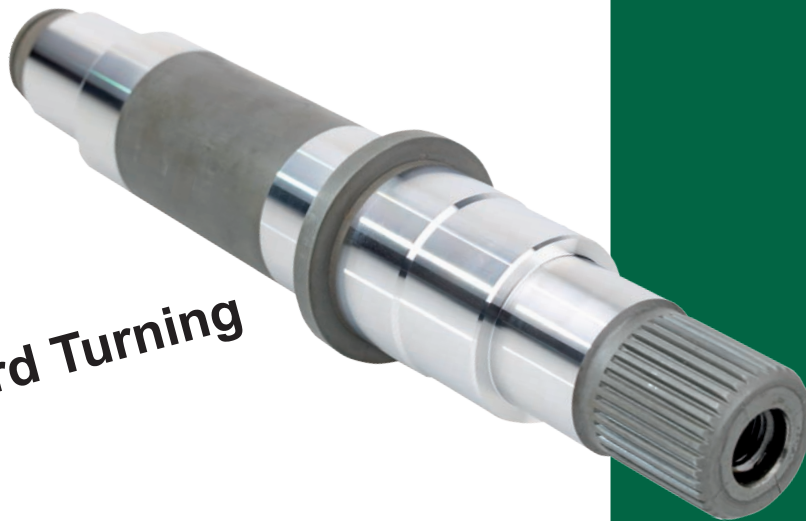
- Several cutting edges
- Full face or multiple corner radii
- Quality coating
- Advanced design
- Increased productivity
- Reduces cost per edge

Hard Turning

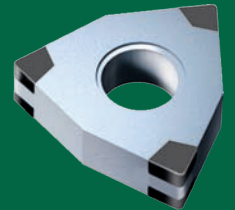
Super Alloys

Sintered Powder Metals

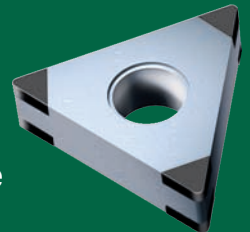
Gray Iron



S8 Style



S6 Style

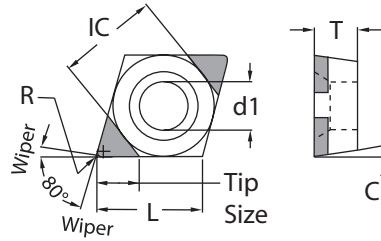
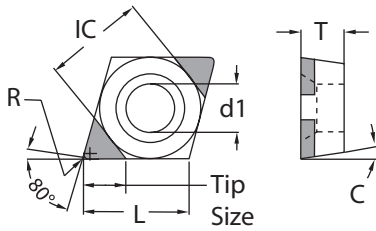


S6 Style

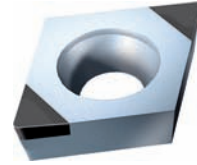


S4 Style

Allow 1 week lead time



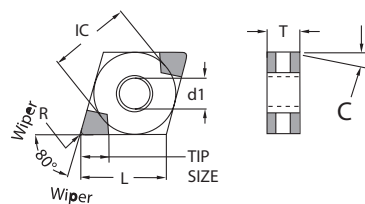
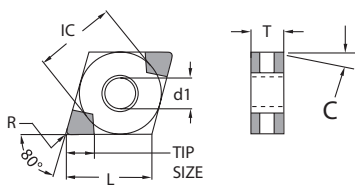
A2 Style



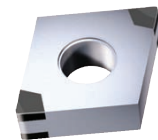
CCGW

Insert Number	Dimensions							PBC-10A2			PBC-15A2			PBC-25A2			PBC-40A2								
	IC	T	C	L	d1	R	TIP SIZE	Gray Iron Super Alloy									Nodular Powdered Metal			Continuous Hard Turn			Interrupted Hard Turn		
	Edge Prep (see page 16)													D	E	H	D	E	H	D	E	H	D	E	H
CCGW-21.50.5	.250	.094	7°	.254	.110	.008	.126	●	●			●			●			●		●	●				
CCGW-21.51	.250	.094	7°	.254	.110	.016	.110	●	●	●	●	●			●	●		●	●	●	●	●			
CCGW-21.52	.250	.094	7°	.254	.110	.031	.094	●	●		●		●		●	●		●	●	●	●	●			
CCGW-32.50.5	.375	.156	7°	.382	.173	.008	.126	●	●	●		●		●	●		●	●		●	●	●			
CCGW-32.51	.375	.156	7°	.382	.173	.016	.110		●		●	●	●	●	●	●	●	●	●	●	●	●			
CCGW-32.52	.375	.156	7°	.382	.173	.031	.094	●		●	●	●	●	●						●	●	●			
CCGW-21.50.5W	.250	.094	7°	.254	.110	.008	.126	●	●		●	●		●						●	●				
CCGW-21.51W	.250	.094	7°	.254	.110	.016	.110		●		●	●		●	●					●	●	●			
CCGW-32.51W	.375	.156	7°	.382	.173	.016	.126	●			●	●								●	●				
CCGW-32.52W	.375	.156	7°	.382	.173	.031	.110	●	●		●	●		●	●		●	●		●	●				

W = Wiper



S4 Style

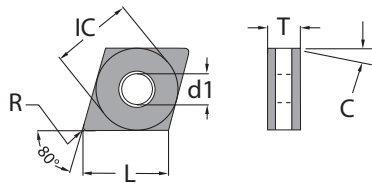


CNGA

Insert Number	Dimensions							PBC-10S4			PBC-15S4			PBC-25S4			PBC-40S4								
	IC	T	C	L	d1	R	TIP SIZE	Gray Iron Super Alloy									Nodular Powdered Metal			Continuous Hard Turn			Interrupted Hard Turn		
	Edge Prep (see page 16)													D	E	H	D	E	H	D	E	H	D	E	H
CNGA-431	.500	.187	0°	.508	.202	.016	.110		●		●	●	●	●	●		●	●		●	●	●			
CNGA-432	.500	.187	0°	.508	.202	.031	.098	●	●		●	●	●	●	●		●	●		●	●	●			
CNGA-433	.500	.187	0°	.508	.202	.047	.087	●	●		●	●	●	●	●		●	●		●	●	●			
CNGA-431W	.500	.187	0°	.508	.202	.016	.110		●		●	●	●	●	●		●	●		●	●	●			
CNGA-432W	.500	.187	0°	.508	.202	.031	.098	●	●		●	●	●	●	●		●	●		●	●	●			

W = Wiper

Allow 1 week lead time

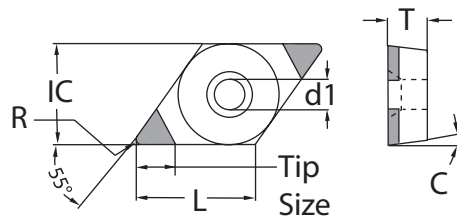


SI Style

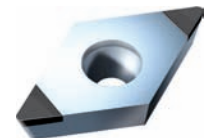


CNGA

Insert Number	Dimensions							PBC-10ST	PBC-15ST	PBC-25ST	PBC-40ST							
	IC	T	C	L	d1	R	TIP SIZE	Gray Iron Super Alloy	Nodular Powdered Metal	Continuous Hard Turn	Interrupted Hard Turn							
	Edge Prep (see page 16)																	
	D	E	H	D	E	H	D	E	H	D	E	H						
CNGA-432	.500	.190	0°	.510	.202	.031	FULL				●						●	●
CNGA-433	.500	.190	0°	.510	.202	.047	FULL				●						●	●



A2 Style



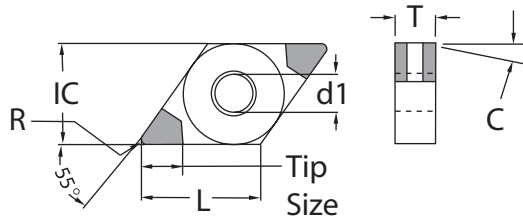
DCGW

Insert Number	Dimensions							PBC-10A2	PBC-15A2	PBC-25A2	PBC-40A2								
	IC	T	C	L	d1	R	TIP SIZE	Gray Iron Super Alloy	Nodular Powdered Metal	Continuous Hard Turn	Interrupted Hard Turn								
	Edge Prep (see page 16)																		
	D	E	H	D	E	H	D	E	H	D	E	H							
DCGW-21.50.5	.250	.094	7°	.305	.110	.008	.134	●	●		●	●		●	●		●	●	●
DCGW-21.51	.250	.094	7°	.305	.110	.016	.118	●	●		●	●	●	●	●		●	●	●
DCGW-21.52	.250	.094	7°	.305	.110	.031	.102	●	●		●	●		●	●		●	●	●
DCGW-32.50.5	.375	.156	7°	.457	.173	.008	.134	●	●		●	●		●	●		●	●	●
DCGW-32.51	.375	.156	7°	.457	.173	.016	.118	●	●		●	●	●	●	●		●	●	●
DCGW-32.52	.375	.156	7°	.457	.173	.031	.102	●	●		●	●	●	●	●		●	●	●

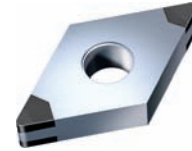
Coated CBN Tipped inserts - "Sandwich" Technology



Allow 1 week lead time

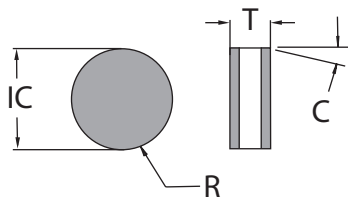


S4 Style

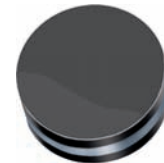


DNGA

Insert Number	Dimensions							PBC-10S4			PBC-15S4			PBC-25S4			PBC-40S4		
	IC	T	C	L	d1	R	TIP SIZE	Edge Prep (see page 16)											
	D	E	H	D	E	H	D	E	H	D	E	H							
DNGA-431	.500	.187	0°	.610	.202	.016	.110		●		●	●	●	●	●		●	●	●
DNGA-432	.500	.187	0°	.610	.202	.031	.098	●	●		●	●	●	●	●		●	●	●

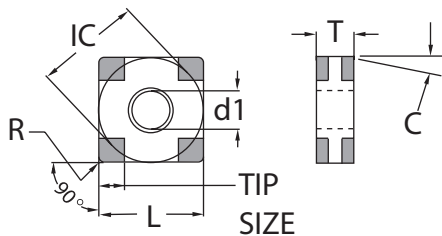


ST Style

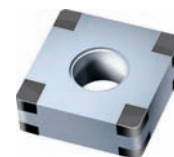


RNGN

Insert Number	Dimensions							PBC-10ST			PBC-15ST			PBC-25ST			PBC-40ST			
	IC	T	C	L	d1	R	TIP SIZE	Edge Prep (see page 16)												
	D	E	H	D	E	H	D	E	H	D	E	H								
RNGN-32	.375	.125	0°	-	-	.188	-		●		●			●				●	●	
RNGN-42	.500	.125	0°	-	-	.187	-		●		●			●						
RNGN-43	.500	.187	0°	-	-	.187	-		●		●			●					●	●



S8 Style



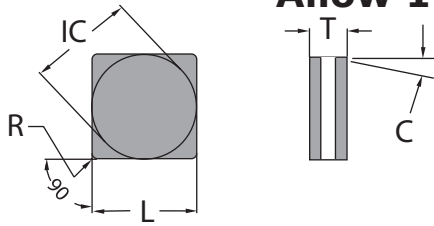
SNGA

Insert Number	Dimensions							PBC-10S8			PBC-15S8			PBC-25S8			PBC-40S8		
	IC	T	C	L	d1	R	TIP SIZE	Edge Prep (see page 16)											
	D	E	H	D	E	H	D	E	H	D	E	H							
SNGA-432	.500	.187	0°	.500	.202	.031	.110	●	●		●	●	●	●	●		●	●	●
SNGA-433	.500	.187	0°	.500	.202	.047	.102	●	●		●	●	●	●	●		●	●	●

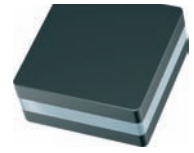
Coated CBN Tipped inserts - "Sandwich" Technology



Allow 1 week lead time

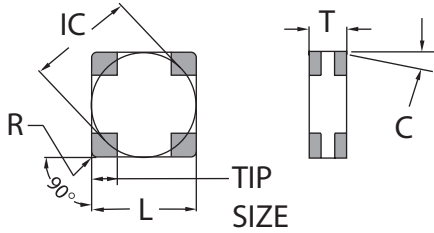


SI Style

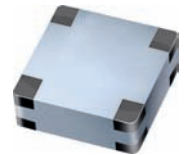


SNGN

Insert Number	Dimensions								PBC-10ST			PBC-15ST			PBC-25ST			PBC-40ST		
	IC	T	C	L	d1	R	TIP SIZE	Edge Prep (see page 16)												
	D	E	H	D	E	H	D	E	H	D	E	H	D	E	H					
SNGN-322	.375	.125	0°	.375	-	.031	-		●		●			●					●	
SNGN-422	.500	.125	0°	.500	-	.031	-		●		●			●					●	
SNGN-432	.500	.187	0°	.500	-	.031	-		●		●			●					●	
SNGN-433	.500	.187	0°	.500	-	.047	-		●		●			●					●	

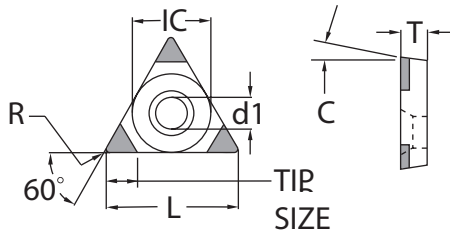


S8 Style

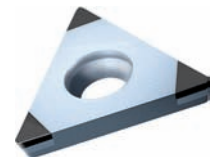


SNGN

Insert Number	Dimensions								PBC-10S8			PBC-15S8			PBC-25S8			PBC-40S8		
	IC	T	C	L	d1	R	TIP SIZE	Edge Prep (see page 16)												
	D	E	H	D	E	H	D	E	H	D	E	H	D	E	H					
SNGN-432	.500	.187	0°	.500	-	.031	.110	●	●		●	●	●	●	●			●	●	●
SNGN-433	.500	.187	0°	.500	-	.047	.102	●	●		●	●	●	●	●			●	●	●



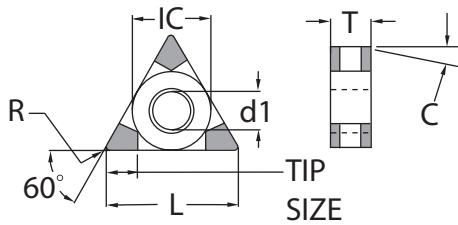
A3 Style



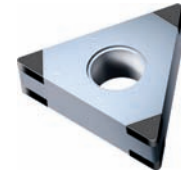
TCGW

Insert Number	Dimensions								PBC-10A3			PBC-15A3			PBC-25A3			PBC-40A3		
	IC	T	C	L	d1	R	TIP SIZE	Edge Prep (see page 16)												
	D	E	H	D	E	H	D	E	H	D	E	H	D	E	H					
TCGW-1.81.50.5	.219	.094	7°	.378	.098	.008	.102		●		●	●			●			●		
TCGW-1.81.51	.219	.094	7°	.378	.098	.016	.087	●	●		●			●				●	●	
TCGW-1.81.52	.219	.094	7°	.378	.098	.031	.071	●	●		●			●	●			●	●	
TCGW-21.50.5	.250	.094	7°	.433	.110	.008	.114		●		●	●			●			●		
TCGW-21.51	.250	.094	7°	.433	.110	.016	.098	●	●		●	●			●			●	●	
TCGW-21.52	.250	.094	7°	.433	.110	.031	.083	●	●		●			●	●			●		
TCGW-32.51	.375	.156	7°	.650	.173	.016	.126	●	●					●				●	●	●
TCGW-32.52	.375	.156	7°	.650	.173	.031	.106	●	●		●			●		●		●	●	●

Allow 1 week lead time

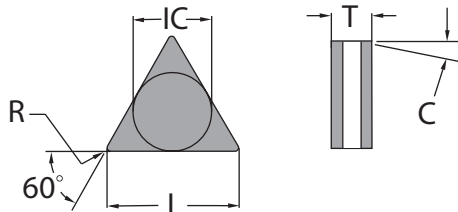


S6 Style

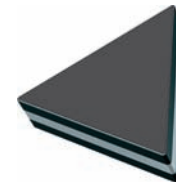


TNGA

Insert Number	Dimensions							PBC-10S6			PBC-15S6			PBC-25S6			PBC-40S6		
	IC	T	C	L	d1	R	TIP SIZE	Edge Prep (see page 16)											
	D	E	H	D	E	H	D	E	H	D	E	H							
TNGA-331	.375	.187	0°	.650	.150	.016	.110		●		●	●	●	●	●		●	●	●
TNGA-332	.375	.187	0°	.650	.150	.031	.098	●	●		●	●	●	●	●		●	●	●
TNGA-333	.375	.187	0°	.650	.150	.047	.087		●		●	●	●	●	●		●	●	●

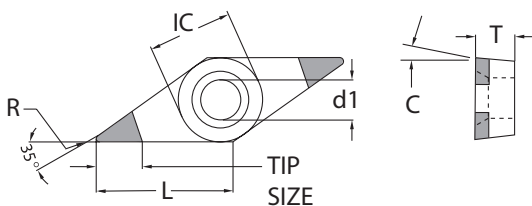


SI Style

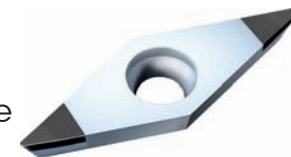


TNGN

Insert Number	Dimensions							PBC-10ST			PBC-15ST			PBC-25ST			PBC-40ST		
	IC	T	C	L	d1	R	TIP SIZE	Edge Prep (see page 16)											
	D	E	H	D	E	H	D	E	H	D	E	H							
TNGN-221	.250	.125	0°	.433	-	.016	-		●		●			●				●	●
TNGN-222	.250	.125	0°	.433	-	.031	-		●		●			●				●	●
TNGN-331	.375	.187	0°	.650	-	.016	-		●		●			●				●	●
TNGN-332	.375	.187	0°	.650	-	.031	-		●		●			●				●	●
TNGN-333	.375	.187	0°	.650	-	.047	-		●		●			●				●	●



A2 Style



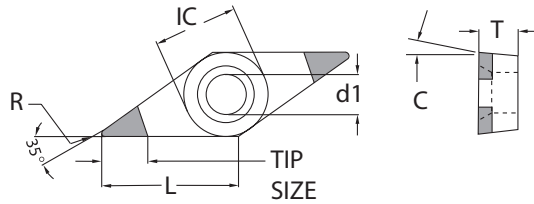
VBGW

Insert Number	Dimensions							PBC-10A2			PBC-15A2			PBC-25A2			PBC-40A2		
	IC	T	C	L	d1	R	TIP SIZE	Edge Prep (see page 16)											
	D	E	H	D	E	H	D	E	H	D	E	H							
VBGW-331	.375	.187	5°	.654	.173	.016	.122	●	●		●	●			●		●	●	●
VBGW-332	.375	.187	5°	.654	.173	.031	.098	●	●			●		●	●		●	●	●

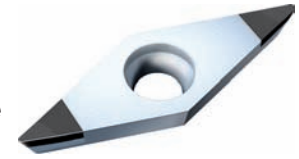
Coated CBN Tipped inserts - "Sandwich" Technology



Allow 1 week lead time

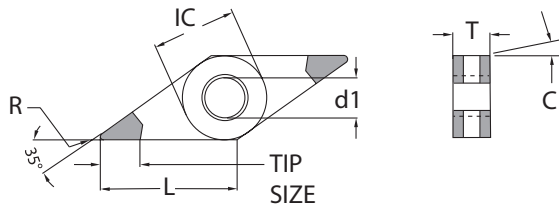


A2 Style

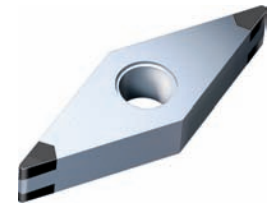


VCGW

Insert Number	Dimensions							PBC-10A2			PBC-15A2			PBC-25A2			PBC-40A2		
	IC	T	C	L	d1	R	TIP SIZE	Edge Prep (see page 16)											
	D	E	H	D	E	H	D	E	H	D	E	H							
VCGW-221	.250	.125	5°	.437	.114	.016	.122	●	●		●	●			●		●	●	●
VCGW-222	.250	.125	5°	.437	.114	.031	.098	●	●		●		●	●	●	●	●	●	●
VCGW-331	.375	.187	5°	.654	.173	.016	.122	●	●		●	●		●		●	●	●	
VCGW-332	.375	.187	5°	.654	.173	.031	.098	●	●		●		●	●	●	●	●	●	

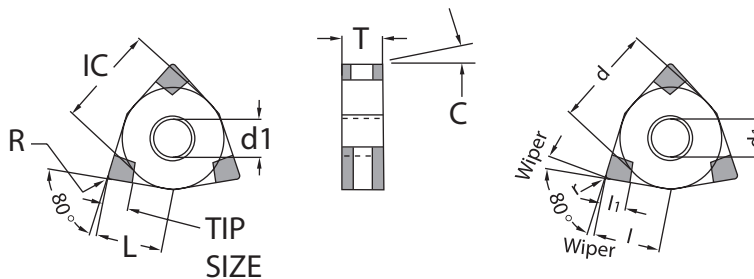


S4 Style

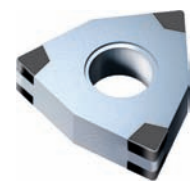


VNGA

Insert Number	Dimensions							PBC-10S4			PBC-15S4			PBC-25S4			PBC-40S4		
	IC	T	C	L	d1	R	TIP SIZE	Edge Prep (see page 16)											
	D	E	H	D	E	H	D	E	H	D	E	H							
VNGA-331	.375	.187	0°	.654	.150	.016	.110	●	●		●	●	●	●	●		●	●	●
VNGA-332	.375	.187	0°	.654	.150	.031	.087	●	●		●	●	●	●	●		●	●	●



S6 Style



WNGA

Insert Number	Dimensions							PBC-10S6			PBC-15S6			PBC-25S6			PBC-40S6		
	IC	T	C	L	d1	R	TIP SIZE	Edge Prep (see page 16)											
	D	E	H	D	E	H	D	E	H	D	E	H							
WNGA-431	.500	.187	0°	.335	.202	.016	.110		●		●	●	●	●	●		●	●	●
WNGA-432	.500	.187	0°	.335	.202	.031	.098	●	●		●	●	●	●	●		●	●	●
WNGA-433	.500	.187	0°	.335	.202	.047	.087	●	●		●	●	●	●	●		●	●	●
WNGA-431W	.500	.187	0°	.335	.202	.016	.110		●		●	●	●	●	●		●	●	●
WNGA-432W	.500	.187	0°	.335	.202	.031	.098	●	●		●	●	●	●	●		●	●	●

W = Wiper

Tip Style	Description
A2	Tips on one side only, 2 tips
A3	Tips on one side only, 3 tips
S4	Sandwich style, 4 tips (top & bottom)
S6	Sandwich style, 6 tips (top & bottom)
S8	Sandwich style, 8 tips (top & bottom)
ST	Sandwich style, full (top & bottom)

Hone (Edge Prep)	Description
D	Boring, No Interruptions
E	General Purpose, All Turning, 1st Choice
H	Interruptions, Part Deflection, Poor Rigidity

Application Range for PBC-10

Gray Cast Iron: GG20 - GG25 - GG30 - GG40

SFPM	Less ← Edge Preparations → More			
	D	E	H	
Cutting Speed ↑	5700			
	4875			
	4000	SFPM	SFPM	
	3250	SFPM	SFPM	
	2450			SFPM
	1625			
	975			
	Feed Rate	.002" to .016"	.002" to .020"	.005" to .014"
	D.O.C.	.002" to .016"	.003" to .020"	.005" to .016"
Cutting Conditions	← Continuous to Heavily Interrupted cut →			

Application Range for PBC-10

Super Alloys: Inconell 718, Nimonic, Hastelloy, Waspaloy

SFPM	Less ← Edge Preparations → More			
	D	E	H	
Cutting Speed ↑	2275			
	1950			
	1625	SFPM	SFPM	
	1300	SFPM	SFPM	
	975			SFPM
	650			
	325			
	Feed Rate	.002" to .016"	.002" to .020"	.005" to .014"
	D.O.C.	.002" to .016"	.003" to .020"	.005" to .016"
Cutting Conditions	← Continuous to Medium Interrupted cut →			

Application Range for PBC-15

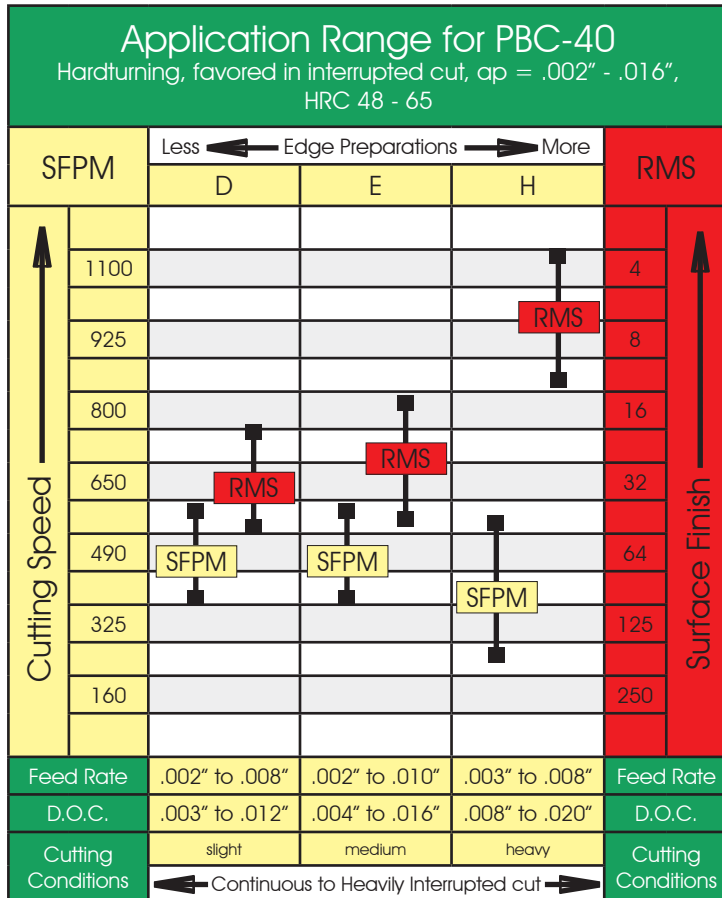
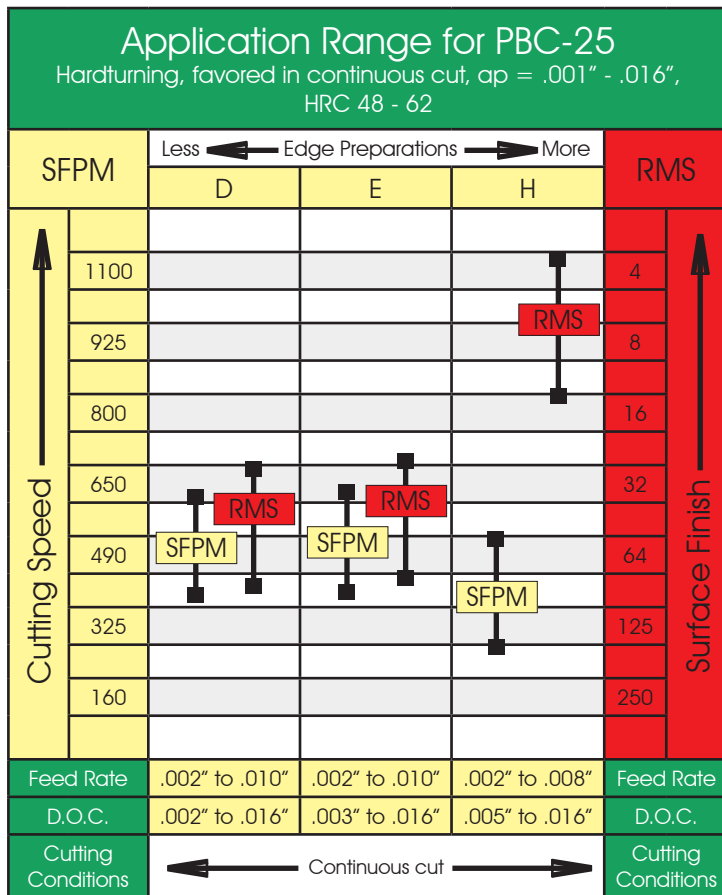
Nodular Cast Iron: GGG30 - GGG40 - GGG50 - GGG60

SFPM	Less ← Edge Preparations → More			
	D	E	H	
Cutting Speed ↑	5700			
	4875			
	4000			
	3250	SFPM	SFPM	
	2450	SFPM	SFPM	
	1625			SFPM
	975			
	Feed Rate	.002" to .014"	.002" to .014"	.005" to .014"
	D.O.C.	.002" to .016"	.003" to .020"	.005" to .016"
Cutting Conditions	← Continuous to Medium Interrupted cut →			

Application Range for PBC-15

Sintered Powdered Steel: Sint D11 - Sint D39

SFPM	Less ← Edge Preparations → More			
	D	E	H	
Cutting Speed ↑	2275			
	1950			
	1625	SFPM	SFPM	
	1300	SFPM	SFPM	
	975			SFPM
	650			
	325			
	Feed Rate	.002" to .014"	.002" to .014"	.005" to .014"
	D.O.C.	.002" to .016"	.003" to .020"	.005" to .016"
Cutting Conditions	← Continuous to Heavily Interrupted cut →			



PCD Chip Breaker Inserts

Allow 1 week lead time

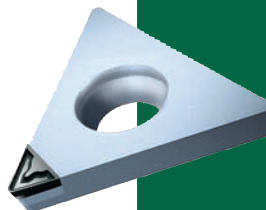
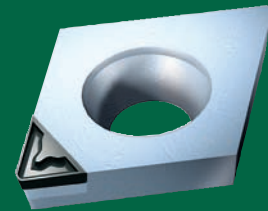
Problem:
Stringy Chips



Solution:
Short Chips



- **Aluminum**
- **Plastic**
- **Bronze**
- **Copper Alloys**
- **Precious Metals**
- **Composites**
- **Brass**



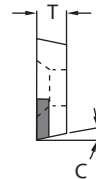
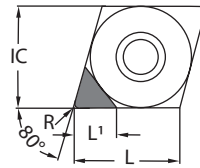
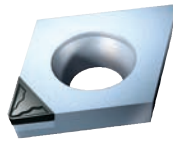
see video



Scan QR Code
for more info

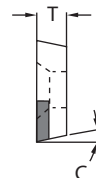
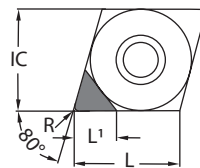
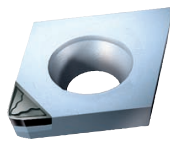
Allow 1 week lead time

CCGT-CB1 Series - Positive



Insert Dimensional & Grade Specifications																			
Insert Number	IC	T	R	C	L	PDC L1	TFC L1	PDC-S			PDC			TFC					
CCGT-21.50.5-CB1	0.250	0.094	.008	7°	.254	.134	.094	■	■	■	■	■	■	■	■	■	■	■	■
CCGT-21.51-CB1	0.250	0.094	.016	7°	.254	.126	.087	■	■	■	■	■	■	■	■	■	■	■	■
CCGT-21.52-CB1	0.250	0.094	.031	7°	.254	.118	.079	■	■	■	■	■	■	■	■	■	■	■	■
CCGT-32.50.5-CB1	0.375	0.156	.008	7°	.382	.177	.094	■	■	■	■	■	■	■	■	■	■	■	■
CCGT-32.51-CB1	0.375	0.156	.016	7°	.382	.169	.087	■	■	■	■	■	■	■	■	■	■	■	■
CCGT-32.52-CB1	0.375	0.156	.031	7°	.382	.161	.079	■	■	■	■	■	■	■	■	■	■	■	■
CCGT-431-CB1	0.500	0.187	.016	7°	.508	.169	.087	■	■	■	■	■	■	■	■	■	■	■	■
CCGT-432-CB1	0.500	0.187	.031	7°	.508	.161	.079	■	■	■	■	■	■	■	■	■	■	■	■

CCGT-CB1 Series - Positive Wiper

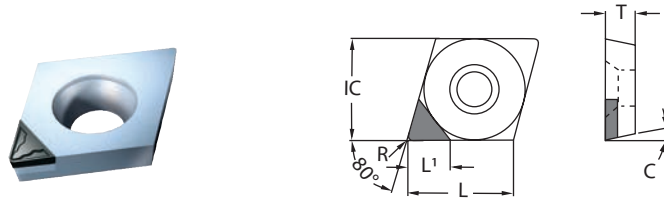


Insert Dimensional & Grade Specifications																			
Insert Number	IC	T	R	C	L	PDC L1	TFC L1	PDC-S			PDC			TFC					
CCGT-21.50.5W-CB1	0.250	0.094	.008	7°	.254	.134	.098	■	■	■	■	■	■	■	■	■	■	■	■
CCGT-21.51W-CB1	0.250	0.094	.016	7°	.254	.130	.091	■	■	■	■	■	■	■	■	■	■	■	■
CCGT-32.50.5W-CB1	0.375	0.156	.008	7°	.382	.177	.098	■	■	■	■	■	■	■	■	■	■	■	■
CCGT-32.51W-CB1	0.375	0.156	.016	7°	.382	.173	.091	■	■	■	■	■	■	■	■	■	■	■	■
CCGT-430.5W-CB1	0.500	0.187	.008	7°	.508	.173	.091	■	■	■	■	■	■	■	■	■	■	■	■
CCGT-431W-CB1	0.500	0.187	.016	7°	.508	.165	.083	■	■	■	■	■	■	■	■	■	■	■	■

P = Steel
 M = Stainless
 K = Cast Iron
 N = Non-Ferrous
 S = High Temp Alloy

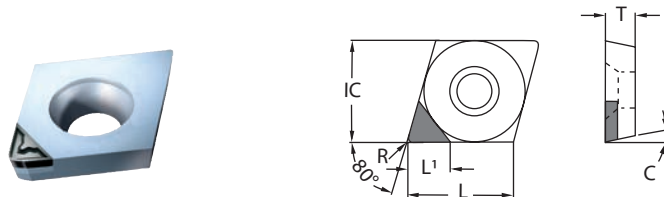
Allow 1 week lead time

CCGT-CB2 Series - Positive



Insert Dimensional & Grade Specifications																
Insert Number	IC	T	R	C	L	PDC L1	TFC L1	PDC-S			PDC			TFC		
CCGT-21.50.5-CB2	0.250	0.094	.008	7°	.254	.134	.094	•	•	•	•	•	•	•	•	•
CCGT-21.51-CB2	0.250	0.094	.016	7°	.254	.126	.087	•	•	•	•	•	•	•	•	•
CCGT-21.52-CB2	0.250	0.094	.031	7°	.254	.118	.079	•	•	•	•	•	•	•	•	•
CCGT-32.50.5-CB2	0.375	0.156	.008	7°	.382	.177	.094	•	•	•	•	•	•	•	•	•
CCGT-32.51-CB2	0.375	0.156	.016	7°	.382	.169	.087	•	•	•	•	•	•	•	•	•
CCGT-32.52-CB2	0.375	0.156	.031	7°	.382	.161	.079	•	•	•	•	•	•	•	•	•
CCGT-431-CB2	0.500	0.187	.016	7°	.508	.169	.087	•	•	•	•	•	•	•	•	•
CCGT-432-CB2	0.500	0.187	.031	7°	.508	.161	.079	•	•	•	•	•	•	•	•	•

CCGT-CB2 Series - Positive Wiper

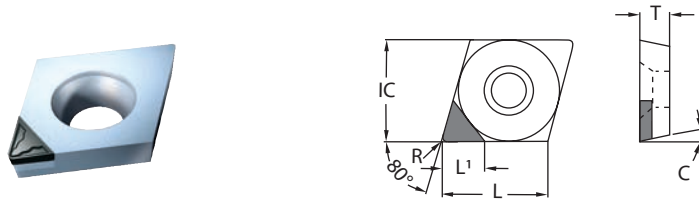


Insert Dimensional & Grade Specifications																
Insert Number	IC	T	R	C	L	PDC L1	TFC L1	PDC-S			PDC			TFC		
CCGT-21.50.5W-CB2	0.250	0.094	.008	7°	.254	.134	.098	•	•	•	•	•	•	•	•	•
CCGT-21.51W-CB2	0.250	0.094	.016	7°	.254	.130	.091	•	•	•	•	•	•	•	•	•
CCGT-32.50.5W-CB2	0.375	0.156	.008	7°	.382	.177	.098	•	•	•	•	•	•	•	•	•
CCGT-32.51W-CB2	0.375	0.156	.016	7°	.382	.173	.091	•	•	•	•	•	•	•	•	•
CCGT-430.5W-CB2	0.500	0.187	.008	7°	.508	.173	.091	•	•	•	•	•	•	•	•	•
CCGT-431W-CB2	0.500	0.187	.016	7°	.508	.165	.083	•	•	•	•	•	•	•	•	•

P = Steel
 M = Stainless
 K = Cast Iron
 N = Non-Ferrous
 S = High Temp Alloy

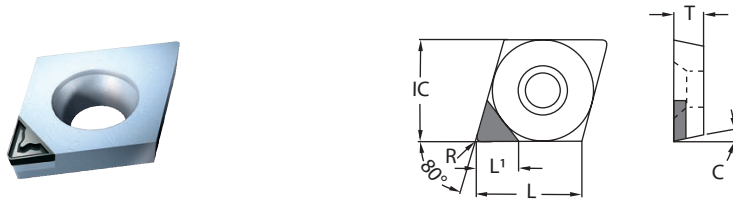
Allow 1 week lead time

CPGT-CB1 Series - Positive



Insert Dimensional & Grade Specifications																			
Insert Number	IC	T	R	C	L	PDC L1	TFC L1	PDC-S			PDC			TFC					
CPGT-1.81.50.5-CB1	0.219	0.094	.008	7°	.220	.094	.094	■	■	■	■	■	■	■	■	■	■	■	■
CPGT-1.81.51-CB1	0.219	0.094	.016	7°	.220	.087	.087	■	■	■	■	■	■	■	■	■	■	■	■
CPGT-21.50.5-CB1	0.250	0.094	.008	7°	.254	.134	.094	■	■	■	■	■	■	■	■	■	■	■	■
CPGT-21.51-CB1	0.250	0.094	.016	7°	.254	.126	.087	■	■	■	■	■	■	■	■	■	■	■	■

CPGT-CB2 Series - Positive

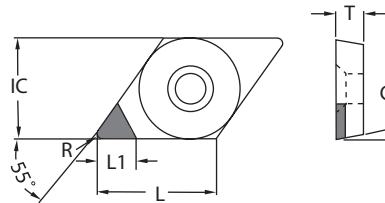
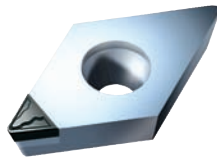


Insert Dimensional & Grade Specifications																			
Insert Number	IC	T	R	C	L	PDC L1	TFC L1	PDC-S			PDC			TFC					
CPGT-21.50.5-CB2	0.250	0.094	.008	7°	.254	.134	.094	■	■	■	■	■	■	■	■	■	■	■	■
CPGT-21.51-CB2	0.250	0.094	.016	7°	.254	.126	.087	■	■	■	■	■	■	■	■	■	■	■	■

P = Steel
 M = Stainless
 K = Cast Iron
 N = Non-Ferrous
 S = High Temp Alloy

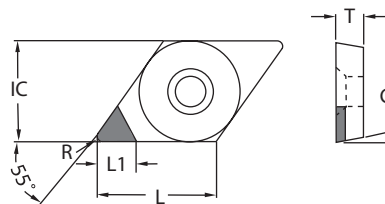
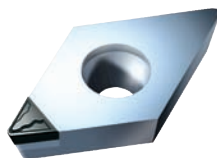
Allow 1 week lead time

DCGT-CB1 Series - Positive



Insert Dimensional & Grade Specifications																
Insert Number	IC	T	R	C	L	PDC L1	TFC L1	PDC-S			PDC			TFC		
DCGT-21.50-CB1	0.250	0.094	.004	7°	.305	.150	.106	•	•	•	•	•	•	•	•	•
DCGT-21.50.5-CB1	0.250	0.094	.008	7°	.305	.146	.102	•	•	•	•	•	•	•	•	•
DCGT-21.51-CB1	0.250	0.094	.016	7°	.305	.134	.091	•	•	•	•	•	•	•	•	•
DCGT-21.52-CB1	0.250	0.094	.031	7°	.305	.118	.079	•	•	•	•	•	•	•	•	•
DCGT-32.50-CB1	0.375	0.156	.004	7°	.457	.189	.106	•	•	•	•	•	•	•	•	•
DCGT-32.50.5-CB1	0.375	0.156	.008	7°	.457	.185	.102	•	•	•	•	•	•	•	•	•
DCGT-32.51-CB1	0.375	0.156	.016	7°	.457	.169	.091	•	•	•	•	•	•	•	•	•
DCGT-32.52-CB1	0.375	0.156	.031	7°	.457	.157	.079	•	•	•	•	•	•	•	•	•

DCGT-CB2 Series - Positive

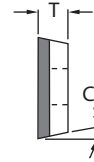
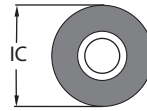


Insert Dimensional & Grade Specifications																
Insert Number	IC	T	R	C	L	PDC L1	TFC L1	PDC-S			PDC			TFC		
DCGT-21.50-CB2	0.250	0.094	.004	7°	.305	.150	.106	•	•	•	•	•	•	•	•	•
DCGT-21.50.5-CB2	0.250	0.094	.008	7°	.305	.146	.102	•	•	•	•	•	•	•	•	•
DCGT-21.51-CB2	0.250	0.094	.016	7°	.305	.134	.091	•	•	•	•	•	•	•	•	•
DCGT-21.52-CB2	0.250	0.094	.031	7°	.305	.118	.079	•	•	•	•	•	•	•	•	•
DCGT-32.50-CB2	0.375	0.156	.004	7°	.457	.189	.106	•	•	•	•	•	•	•	•	•
DCGT-32.50.5-CB2	0.375	0.156	.008	7°	.457	.185	.102	•	•	•	•	•	•	•	•	•
DCGT-32.51-CB2	0.375	0.156	.016	7°	.457	.169	.091	•	•	•	•	•	•	•	•	•
DCGT-32.52-CB2	0.375	0.156	.031	7°	.457	.157	.079	•	•	•	•	•	•	•	•	•

P = Steel
 M = Stainless
 K = Cast Iron
 N = Non-Ferrous
 S = High Temp Alloy

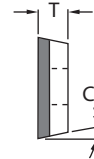
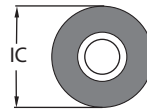
Allow 1 week lead time

RCGT-CB1 Series - Full Face



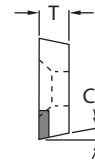
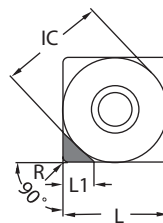
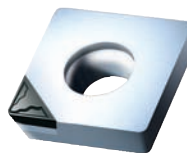
Insert Dimensional & Grade Specifications																
Insert Number	IC	T	R	C	L	PDC L1	TFC L1	PDC-S			PDC			TFC		
RCGT-0602M0-VM	0.236	0.094	-	7°	-	-	-	●	●	●	●	●	●	●	●	●
RCGT-10T3M0-VM	0.394	0.156	-	7°	-	-	-	●	●	●	●	●	●	●	●	●

RCGT-CB2 Series - Full Face



Insert Dimensional & Grade Specifications																
Insert Number	IC	T	R	C	L	PDC L1	TFC L1	PDC-S			PDC			TFC		
RCGT-0602M0-VM	0.236	0.094	-	7°	-	-	-	●	●	●	●	●	●	●	●	●
RCGT-10T3M0-VM	0.394	0.156	-	7°	-	-	-	●	●	●	●	●	●	●	●	●

SCGT-CB1 Series - Positive

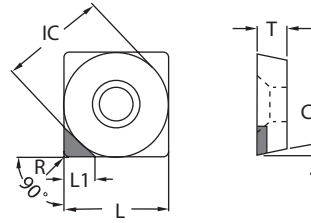
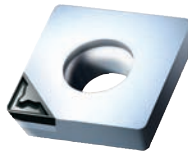


Insert Dimensional & Grade Specifications																
Insert Number	IC	T	R	C	L	PDC L1	TFC L1	PDC-S			PDC			TFC		
SCGT-32.51-CB1	0.375	0.156	.016	7°	.375	.173	.110	●	●	●	●	●	●	●	●	●
SCGT-32.52-CB1	0.375	0.156	.031	7°	.375	.169	.102	●	●	●	●	●	●	●	●	●
SCGT-431-CB1	0.500	0.187	.016	7°	.500	.173	.110	●	●	●	●	●	●	●	●	●
SCGT-432-CB1	0.500	0.187	.031	7°	.500	.169	.102	●	●	●	●	●	●	●	●	●

P = Steel
 M = Stainless
 K = Cast Iron
 N = Non-Ferrous
 S = High Temp Alloy

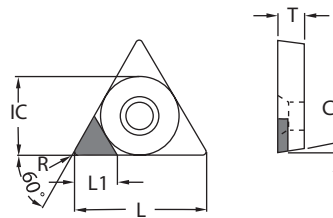
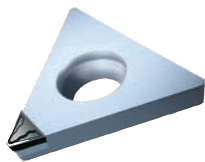
Allow 1 week lead time

SCGT-CB2 Series - Positive



Insert Dimensional & Grade Specifications																
Insert Number	IC	T	R	C	L	PDC L1	TFC L1	PDC-S			PDC			TFC		
SCGT-32.51-CB2	0.375	0.156	.016	7°	.375	.173	.110	●	●	●	●	●	●	●	●	●
SCGT-32.52-CB2	0.375	0.156	.031	7°	.375	.169	.102	●	●	●	●	●	●	●	●	●
SCGT-431-CB2	0.500	0.187	.016	7°	.500	.173	.110	●	●	●	●	●	●	●	●	●
SCGT-432-CB2	0.500	0.187	.031	7°	.500	.169	.102	●	●	●	●	●	●	●	●	●

TCGT-CB1 Series - Positive

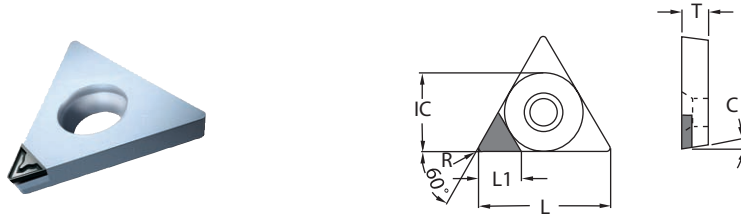


Insert Dimensional & Grade Specifications																
Insert Number	IC	T	R	C	L	PDC L1	TFC L1	PDC-S			PDC			TFC		
TCGT-1.81.50.5-CB1	0.219	0.094	.008	7°	.378	.146	.102	●	●	●	●	●	●	●	●	●
TCGT-1.81.51-CB1	0.219	0.094	.016	7°	.378	.134	.091	●	●	●	●	●	●	●	●	●
TCGT-21.50.5-CB1	0.250	0.094	.008	7°	.433	.146	.102	●	●	●	●	●	●	●	●	●
TCGT-21.51-CB1	0.250	0.094	.016	7°	.433	.134	.091	●	●	●	●	●	●	●	●	●
TCGT-32.51-CB1	0.375	0.156	.016	7°	.650	.181	.091	●	●	●	●	●	●	●	●	●
TCGT-32.52-CB1	0.375	0.156	.031	7°	.650	.165	.079	●	●	●	●	●	●	●	●	●

P = Steel
 M = Stainless
 K = Cast Iron
 N = Non-Ferrous
 S = High Temp Alloy

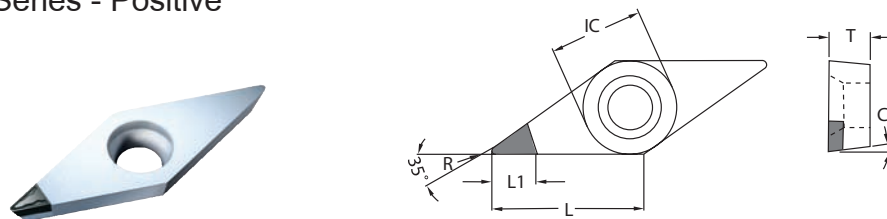
Allow 1 week lead time

TCGT-CB2 Series - Positive



Insert Dimensional & Grade Specifications																
Insert Number	IC	T	R	C	L	PDC L1	TFC L1	PDC-S			PDC			TFC		
TCGT-1.81.50.5-CB2	0.219	0.094	.008	7°	.378	.146	.102	●	●	●	●	●	●	●	●	●
TCGT-1.81.51-CB2	0.219	0.094	.016	7°	.378	.134	.091	●	●	●	●	●	●	●	●	●
TCGT-21.50.5-CB2	0.250	0.094	.008	7°	.433	.146	.102	●	●	●	●	●	●	●	●	●
TCGT-21.51-CB2	0.250	0.094	.016	7°	.433	.134	.091	●	●	●	●	●	●	●	●	●
TCGT-32.51-CB2	0.375	0.156	.016	7°	.650	.181	.091	●	●	●	●	●	●	●	●	●
TCGT-32.52-CB2	0.375	0.156	.031	7°	.650	.165	.079	●	●	●	●	●	●	●	●	●

VBGT-CB1 Series - Positive

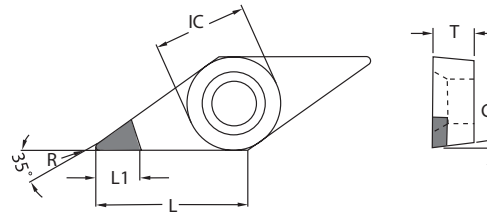
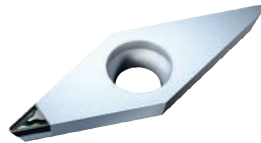


Insert Dimensional & Grade Specifications																
Insert Number	IC	T	R	C	L	PDC L1	TFC L1	PDC-S			PDC			TFC		
VBGT-330.5-CB1	0.375	0.187	.008	5°	.654	.232	.118	●	●	●	●	●	●	●	●	●
VBGT-331-CB1	0.375	0.187	.016	5°	.654	.217	.118	●	●	●	●	●	●	●	●	●
VBGT-332-CB1	0.375	0.187	.031	5°	.654	.197	.118	●	●	●	●	●	●	●	●	●
VBGT-333-CB1	0.375	0.187	.047	5°	.654	.173	.118	●	●	●	●	●	●	●	●	●

P = Steel
 M = Stainless
 K = Cast Iron
 N = Non-Ferrous
 S = High Temp Alloy

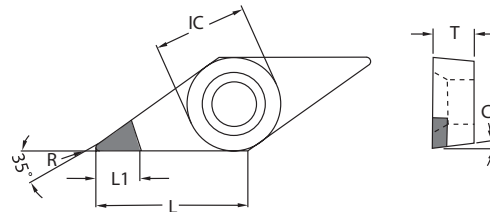
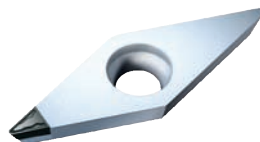
Allow 1 week lead time

VBGT-CB2 Series - Positive



Insert Dimensional & Grade Specifications																
Insert Number	IC	T	R	C	L	PDC L1	TFC L1	PDC-S			PDC			TFC		
VBGT-330.5-CB2	0.375	0.187	.008	5°	.654	.232	.118	●	●	●	●	●	●	●	●	●
VBGT-331-CB2	0.375	0.187	.016	5°	.654	.217	.118	●	●	●	●	●	●	●	●	●
VBGT-332-CB2	0.375	0.187	.031	5°	.654	.197	.118	●	●	●	●	●	●	●	●	●
VBGT-333-CB2	0.375	0.187	.047	5°	.654	.173	.118	●	●	●	●	●	●	●	●	●

VCGT-CB1 Series - Positive

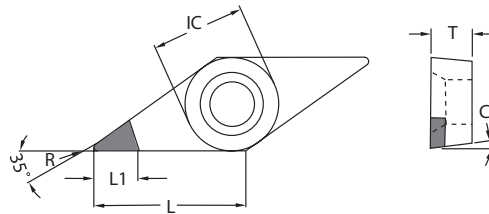
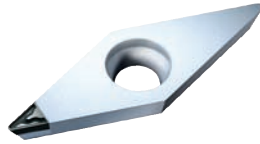


Insert Dimensional & Grade Specifications																
Insert Number	IC	T	R	C	L	PDC L1	TFC L1	PDC-S			PDC			TFC		
VCGT-220-CB1	0.250	0.125	.004	7°	.437	.213	.118	●	●	●	●	●	●	●	●	●
VCGT-220.5-CB1	0.250	0.125	.008	7°	.437	.181	.118	●	●	●	●	●	●	●	●	●
VCGT-221-CB1	0.250	0.125	.016	7°	.437	.154	.118	●	●	●	●	●	●	●	●	●
VCGT-330.5-CB1	0.375	0.187	.008	7°	.654	.232	.118	●	●	●	●	●	●	●	●	●
VCGT-331-CB1	0.375	0.187	.016	7°	.654	.217	.118	●	●	●	●	●	●	●	●	●
VCGT-332-CB1	0.375	0.187	.031	7°	.654	.197	.118	●	●	●	●	●	●	●	●	●
VCGT-333-CB1	0.375	0.187	.047	7°	.654	.177	.118	●	●	●	●	●	●	●	●	●

P = Steel
 M = Stainless
 K = Cast Iron
 N = Non-Ferrous
 S = High Temp Alloy

Allow 1 week lead time

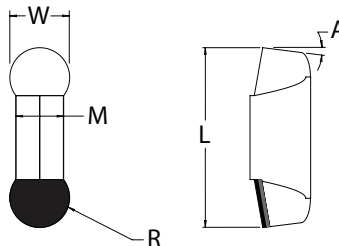
VCGT-CB2 Series - Positive



Insert Dimensional & Grade Specifications

Insert Number	IC	T	R	C	L	PDC L1	TFC L1	PDC-S			PDC			TFC		
VCGT-220.5-CB2	0.250	0.125	.004	7°	.437	.213	.118	•	•	•	•	•	•	•	•	•
VCGT-221-CB2	0.250	0.125	.008	7°	.437	.181	.118	•	•	•	•	•	•	•	•	•
VCGT-222-CB2	0.250	0.125	.016	7°	.437	.154	.118	•	•	•	•	•	•	•	•	•
VCGT-330.5-CB2	0.375	0.187	.008	7°	.654	.232	.118	•	•	•	•	•	•	•	•	•
VCGT-331-CB2	0.375	0.187	.016	7°	.654	.217	.118	•	•	•	•	•	•	•	•	•
VCGT-332-CB2	0.375	0.187	.031	7°	.654	.197	.118	•	•	•	•	•	•	•	•	•
VCGT-333-CB2	0.375	0.187	.047	7°	.654	.177	.118	•	•	•	•	•	•	•	•	•

GIDA-80/40 Series - Full Radii



Insert Dimensional & Grade Specifications

Insert Number	L	A	W	R	M	PDC-S			PDC			TFC				
GIDA-80/40-CBW	1.18	10°	.315	.157	.220	•	•	•	•	•	•	•	•	•	•	•

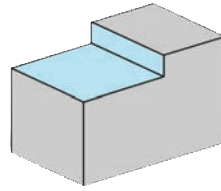
P = Steel
 M = Stainless
 K = Cast Iron
 N = Non-Ferrous
 S = High Temp Alloy

Chip Breaker Cutting Information		DOC	FEED (ipr)	
Designation	Application	Radius	Min. - Max.	
CB1	Application: Finishing to medium depths of cuts with light feed rates.	0.004"	0.002" - 0.012"	0.0008" - 0.002"
		0.008"	0.0025" - 0.016"	0.0011" - 0.003"
		0.016"	0.004" - 0.032"	0.003" - 0.006"
		0.032"	0.006" - 0.040"	0.003" - 0.008"
		0.047"	0.012" - 0.060"	0.0045" - 0.010"
CB2	Application: General purpose machining. Higher depths of cut and medium to heavy chip loads.	0.004"	---	---
		0.008"	0.020" - 0.032"	0.003" - 0.005"
		0.016"	0.024" - 0.060"	0.003" - 0.008"
		0.032"	0.028" - 0.060"	0.006" - 0.012"
		0.047"	0.032" - 0.080"	0.008" - 0.016"

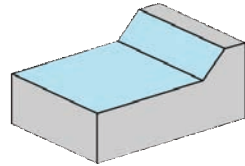
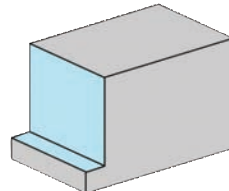
Speed Information	SFPM		
	PDC	PDC-S	TFC
Non-ferrous metals, aluminum alloys without silicon	1300 - 8000	1300 - 8000	1600 - 15000
Non-ferrous metals, aluminum alloys with less than 12% silicon	1300 - 6500	1950 - 6500	1300 - 11000
Non-ferrous metals, aluminum alloys with more than 12% silicon	---	1300 - 4800	1300 - 6000
Brass, bronze, copper, copper alloys, precious metals	975 - 5800	975 - 5500	1300 - 7000
Non-metallics, pure plastics without reinforcements	975 - 3900	---	1300 - 6000
Non-metallics, plastics with reinforcements	---	650 - 3000	650 - 4500

Cutting Tool Applications

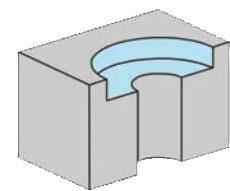
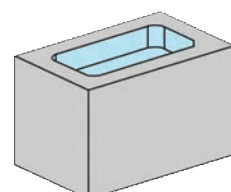
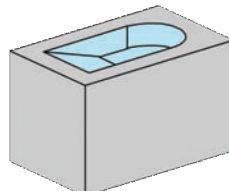
Shoulder on Face



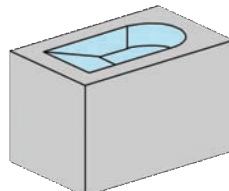
Shoulder on Side



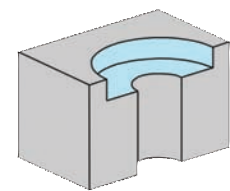
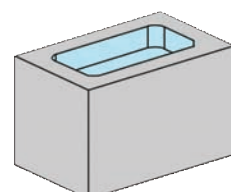
Chamfer & Face



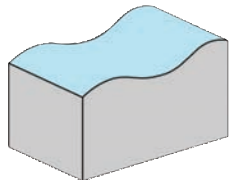
Ramp



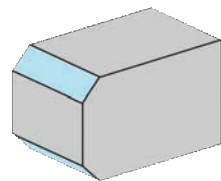
Recess



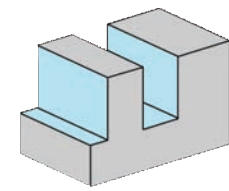
Plunge



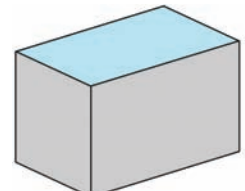
Profile



Chamfer



Slot

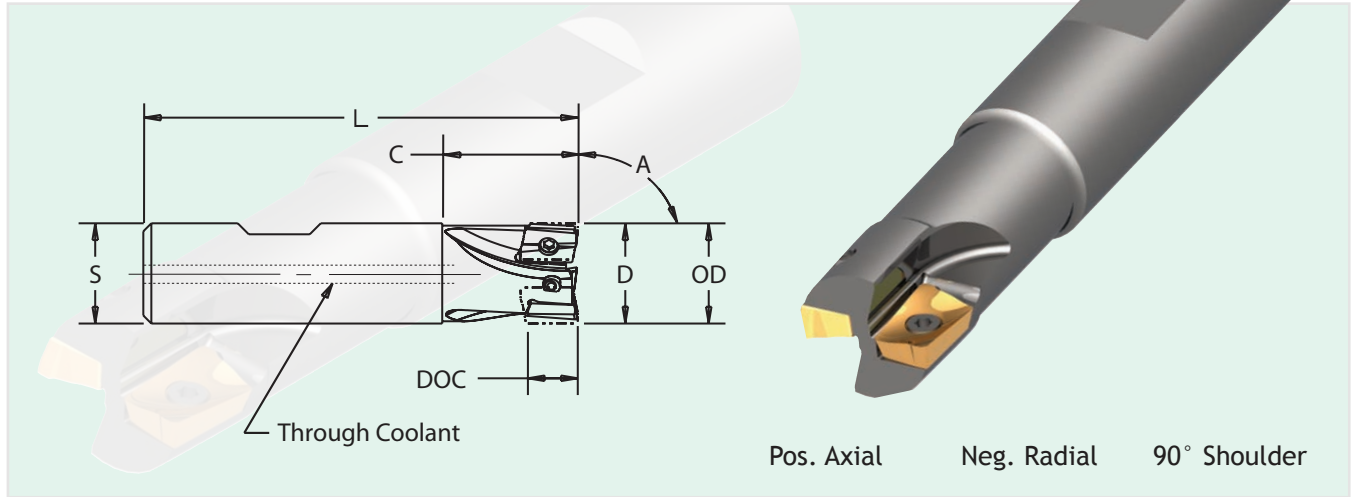
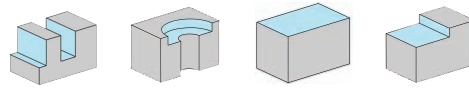


Face

Positive End Mills - 90° Shoulder



207 Series



APKT inserts provide 10mm long cut

207 Series End Mills - Dimensional Specifications

Product Number	D	OD	S	L	C	A	DOC	Teeth
207E0062AAP2-W062RC	0.625	0.625	0.625	3.25	1.34	90°	0.355	2
207E0062BAP2-W062RC	0.625	0.625	0.625	6.00	1.00	90°	0.355	2
207E0075AAP2-W075RC	0.750	0.750	0.750	3.38	1.26	90°	0.355	3
207E0075BAP2-S075RC	0.750	0.750	0.750	8.00	1.25	90°	0.355	3
207E0100AAP2-W075RC	1.000	1.000	0.750	3.38	1.35	90°	0.355	4
207E0100BAP2-S100RC	1.000	1.000	1.000	8.00	1.25	90°	0.355	4
207E0125AAP2-W100RC	1.250	1.250	1.000	3.75	1.25	90°	0.355	5
207E0125BAP2-S100RC	1.250	1.250	1.000	10.00	1.25	90°	0.355	5
207E0150AAP2-W125RC	1.500	1.500	1.250	4.00	1.25	90°	0.355	6
207E0150BAP2-S125RC	1.500	1.500	1.250	10.00	1.25	90°	0.355	6

A = Standard lengths B = Extended lengths S = Straight Shank W = Weldon Shank C = Through Coolant

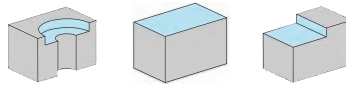
Accessory Parts

Insert IC & Thickness				
	Insert see page 33	Insert see page 33	Torx Screw	Wrench
.263 x .137	APKT-1003-PDER	APKT-1003-PDSR	3605-0001-0049	1557-TX08

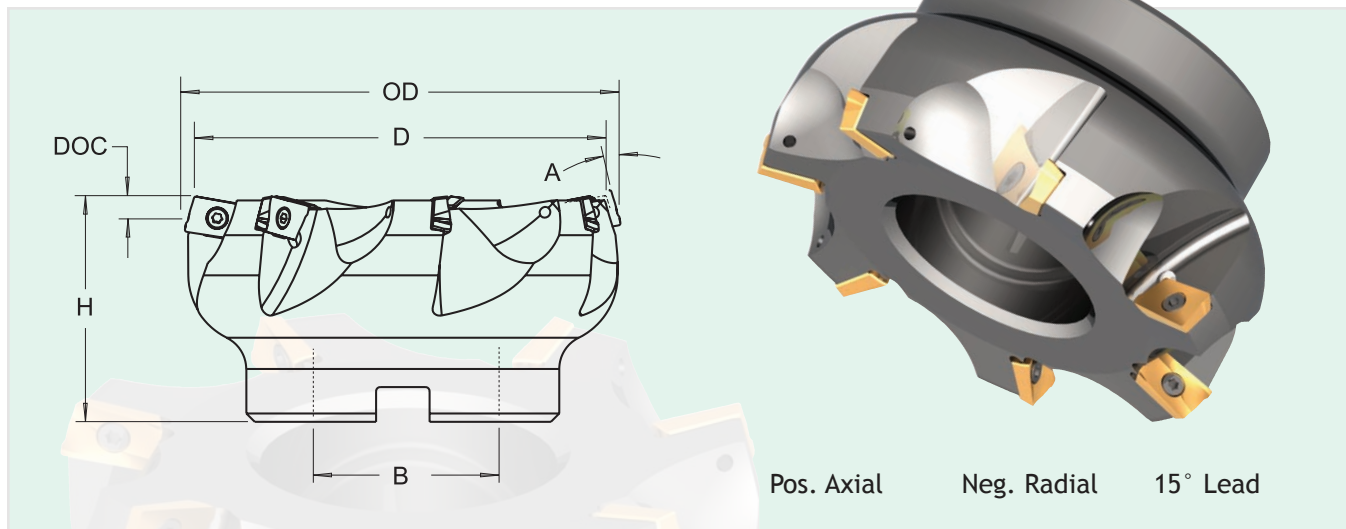
Positive Face Mills - 15° Shoulder



217 Series



Utilizes opposite corners of APKT style inserts

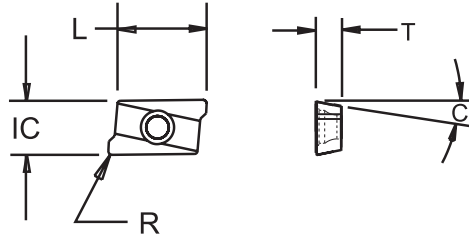


217 Series Face Mills - Dimensional Specifications

Product Number	D	OD	B	H	A	DOC	Teeth
217F0200AAP2-075R	2.000	2.136	0.750	1.625	15°	0.120	5
217F0250AAP2-100R	2.500	2.636	1.000	1.625	15°	0.120	6
217F0300AAP2-100R	3.000	3.136	1.000	1.625	15°	0.120	7

Accessory Parts

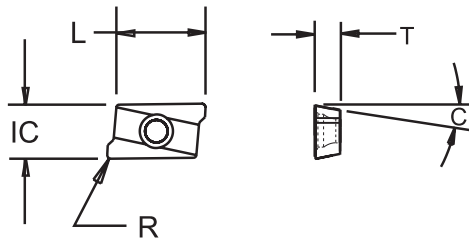
Insert IC & Thickness				
	Insert see page 33	Insert see page 33	Torx Screw	Wrench
.263 x .137	APKT-1003-PDER	APKT-1003-PDSR	3605-0001-0049	1557-TX08



Insert Dimensional & Grade Specifications

Insert Number	IC	T	R	C	L	Coated				
						LT-7175				
APKT-1003-PDER	0.263	0.137	0.019	11°	0.370	●	□	●	□	●

● = Primary insert and grade □ = Secondary insert and grade



Insert Dimensional & Grade Specifications

Insert Number	IC	T	R	C	L	Coated				
						LT-1475				
APKT-1003-PDSR	0.263	0.137	0.019	11°	0.370	●	●	□	●	□

● = Primary insert and grade □ = Secondary insert and grade

Machining Parameters

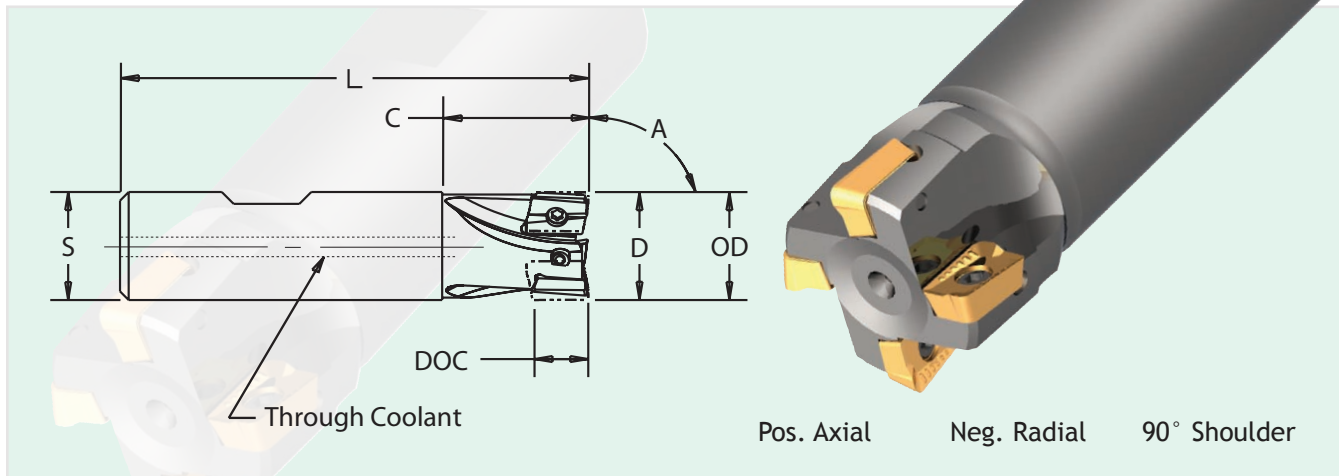
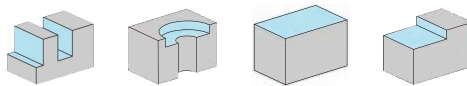
Material	SFPM	FPT	Primary	Secondary
Low Carbon Steel	400 - 900	.003 - .008	APKT-1003-PDSR LT-1475	APKT-1003-PDER LT-7175
Alloy Steel	300 - 700	.003 - .008	APKT-1003-PDER LT-7175	APKT-1003-PDSR LT-1475
Austenitic Stainless	300 - 700	.003 - .008	APKT-1003-PDSR LT-1475	APKT-1003-PDER LT-7175
Martensitic Stainless	300 - 700	.003 - .008	APKT-1003-PDSR LT-1475	APKT-1003-PDER LT-7175
Aluminum	1000 & up	.003 - .008	APKT-1003-PDSR LT-1475	APKT-1003-PDER LT-7175
Gray Cast Iron	300 - 600	.003 - .008	APKT-1003-PDER LT-7175	APKT-1003-PDSR LT-1475
Ductile Iron	300 - 600	.003 - .008	APKT-1003-PDER LT-7175	APKT-1003-PDSR LT-1475
Titanium	80 - 150	.003 - .008	APKT-1003-PDER LT-7175	APKT-1003-PDSR LT-1475

P = Steel **M** = Stainless **K** = Cast Iron **N** = Non-Ferrous **S** = High Temp Alloy

Positive End Mills - 90° Shoulder



215 Series



APKX inserts provide 15mm long cut

215 Series End Mills - Dimensional Specifications

Product Number	D	OD	S	L	C	A	DOC	Teeth
215E0100AAP3-W100RC	1.000	1.000	1.000	3.50	1.22	90°	0.555	2
215E0100BAP3-S100RC	1.000	1.000	1.000	6.50	1.25	90°	0.555	2
215E0125AAP3-W125RC	1.250	1.250	1.250	3.75	1.47	90°	0.555	3
215E0125BAP3-S125RC	1.250	1.250	1.250	7.62	1.80	90°	0.555	3
215E0150AAP3-W125RC	1.500	1.500	1.250	4.00	1.29	90°	0.555	4

A = Standard lengths B = Extended lengths S = Straight Shank W = Weldon Shank RC = Through Coolant

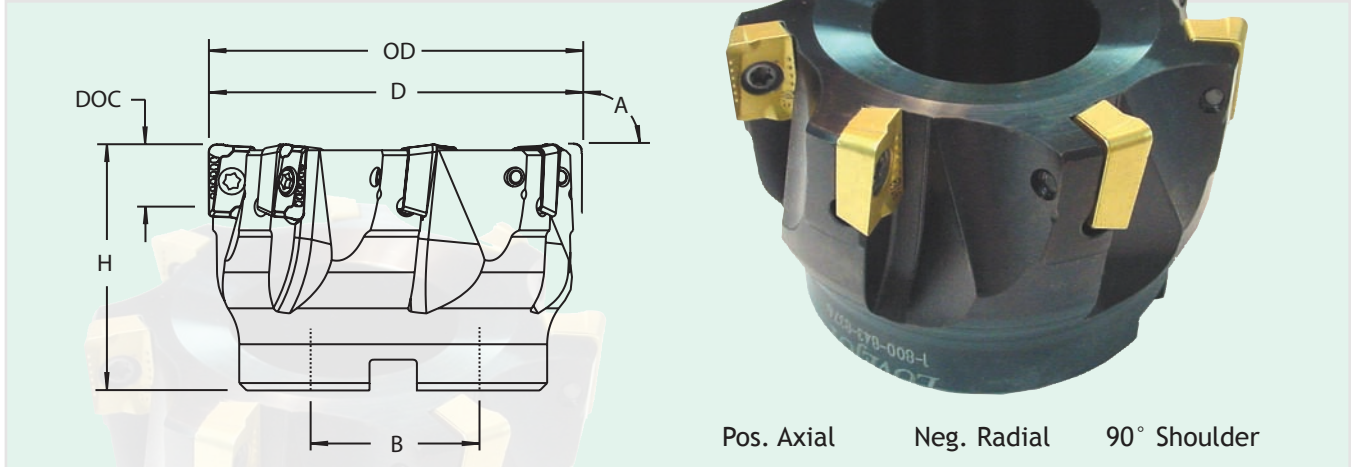
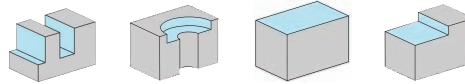
Accessory Parts

Insert IC x Thickness				
	Insert - 15mm Long see page 37	Torx Screw 1" to 1.25" dia.'s	Torx Screw 1.5" dia. only	Wrench
.375 x .220	APKX-1505PDER_	3605-0001-0056	3605-0001-0055	1557-TX15

Positive Face Mills - 90° Shoulder



215 Series



APKX inserts provide 15mm long cut

215 Series Face Mills - Dimensional Specifications

Product Number	D	OD	B	H	A	DOC	Teeth
215F0150AAP3-075R	1.500	1.500	0.750	1.750	90°	0.555	4
215F0200AAP3-075R	2.000	2.000	0.750	1.750	90°	0.555	5
215F0250AAP3-100R	2.500	2.500	1.000	2.000	90°	0.555	6
215F0300AAP3-100R	3.000	3.000	1.000	2.000	90°	0.555	7
215F0400AAP3-150R	4.000	4.000	1.500	2.000	90°	0.555	8

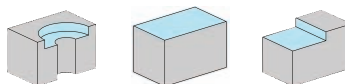
Accessory Parts

Insert IC x Thickness			
	Insert - 15mm Long see page 37	Torx Screw	Wrench
.375 x .220	APKX-1505PDER_	3605-0001-0055	1557-TX15

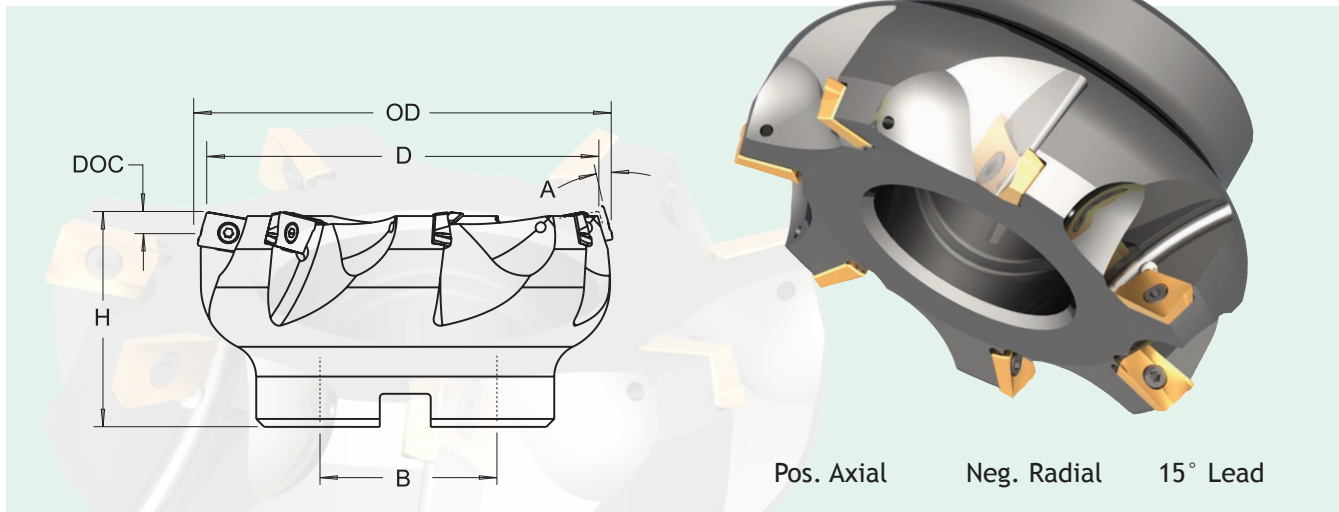
Positive Face Mills - 15° Shoulder



218 Series



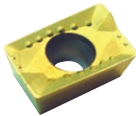


Utilizes opposite corners of APKX style inserts

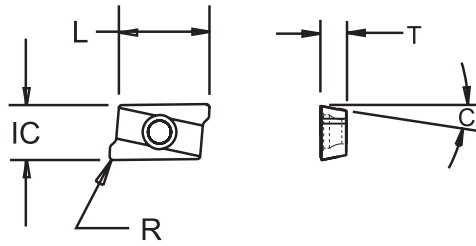
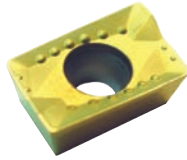


218 Series Face Mills - Dimensional Specifications

Product Number	D	OD	B	H	A	DOC	Teeth
218F0300AAP3-100R	3.000	3.128	1.000	1.625	15°	0.120	7

Accessory Parts

Insert IC x Thickness			
	Insert - 15mm Long see page 37	Torx Screw	Wrench
.375 x .220	APKX-1505PDER_	3605-0001-0055	1557-TX08



Insert Dimensional & Grade Specifications																			
Insert Number	IC	T	R	C	L	LT-9325			LT-8016			LT-8240							
APKX-1505PDER-F	0.375	0.220	0.031	11°	0.591					□	□	•	•	□	•	•	•	•	•
APKX-1505PDER-M	0.375	0.220	0.031	11°	0.591	•	□	•	•	□					•	•	•	•	•
APKX-1505PDSR-R	0.375	0.220	0.031	11°	0.591										•	•	•	•	•
APKX-150516-M	0.375	0.220	0.062	11°	0.591					□	□	•	•	□	•	•	•	•	•
APKX-150532-M	0.375	0.220	0.125	11°	0.591					□	□	•	•	□	•	•	•	•	•

• = Primary insert and grade □ = Secondary insert and grade

- “F” Finishing Chipbreaker Geometry has a sharper edge for work hardening alloys, finish cuts, gummy materials
- “M” Medium Chipbreaker Geometry has a reinforced top land for added edge strength when needed
- “R” Roughing Chipbreaker Geometry for severe interruptions, forgings, heavy scale

Machining Parameters				
Material	SFPM	FPT	Primary	Secondary
Low Carbon Steel	400 - 900	.003 - .008	APKX-1505PDER-M LT-5026	APKX-1505PDER-M LT-8240
Alloy Steel	300 - 700	.003 - .008	APKX-1505PDER-M LT-5026	APKX-1505PDER-M LT-8240
Austenitic Stainless	250 - 500	.003 - .008	APKX-1505PDER-F LT-8016	APKX-1505PDER-M LT-5026
Martensitic Stainless	250 - 500	.003 - .008	APKX-1505PDER-M LT-5026	APKX-1505PDER-M LT-8240
Aluminum	1000 & up	.003 - .008	APKX-1505PDER-F LT-8016	APKX-1505PDER-F LT-8026
Copper	500 - 1000	.003 - .008	APKX-1505PDER-F LT-8016	APKX-1505PDER-F LT-8026
Gray Cast Iron	300 - 800	.003 - .008	APKX-1505PDER-F LT-8016	APKX-1505PDER-F LT-8016
Ductile Iron	300 - 800	.003 - .008	APKX-1505PDER-M LT-5026	APKX-1505PDER-F LT-8240
Titanium	80 - 150	.003 - .008	APKX-1505PDER-F LT-8016	APKX-1505PDER-F LT-8026
Heat Treat Steel (above 45Rc)	90 - 200	.003 - .008	APKX-1505PDER-F LT-8016	APKX-1505PDER-F LT-8026

H = Hard Steel

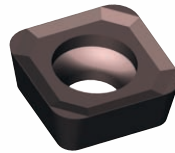
P = Steel **M** = Stainless **K** = Cast Iron **N** = Non-Ferrous **S** = High Temp Alloy

High Feed Milling

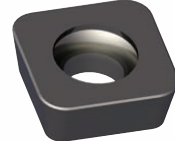
- Plated Cutter Bodies
- Resistance against
 - chip erosion
 - corrosion



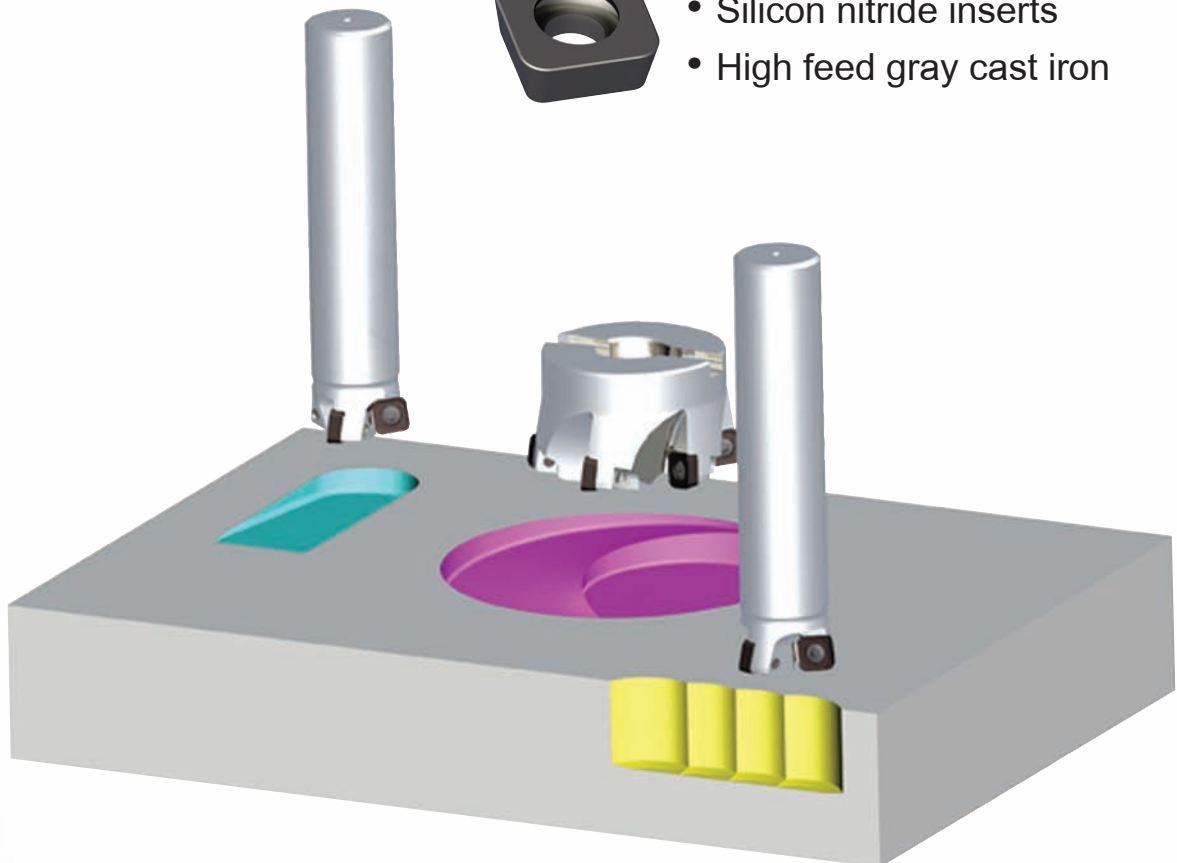
- Ramping
- Plunging
- Circle Interpolate
- Enlarge



- Coated carbide inserts
- Most materials

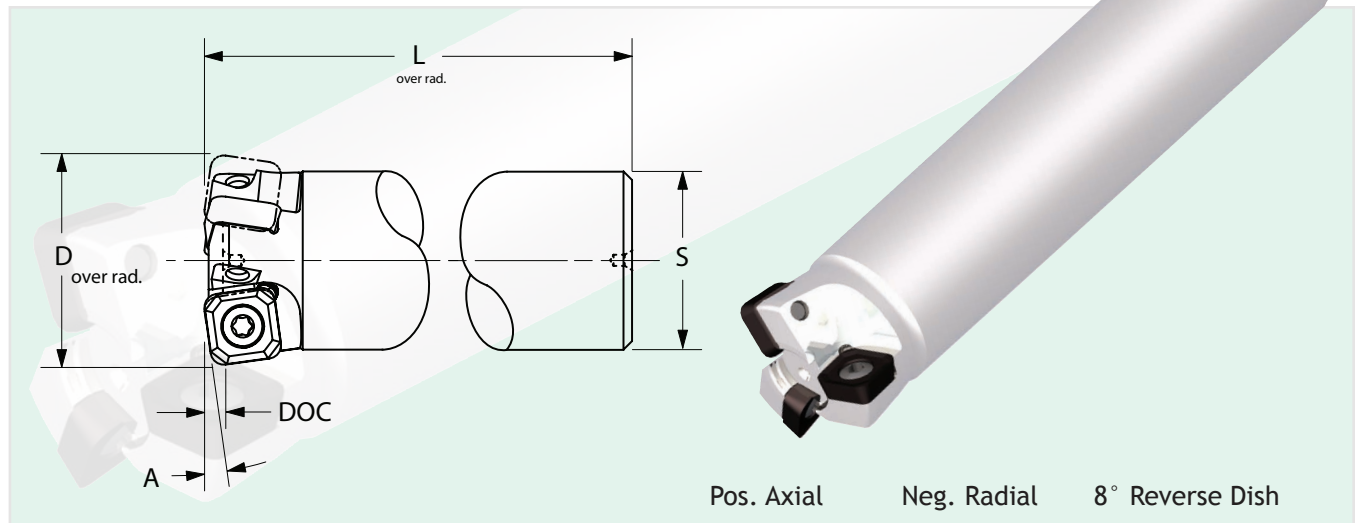
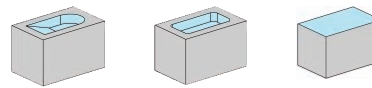


- Silicon nitride inserts
- High feed gray cast iron



Positive End Mills

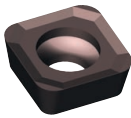
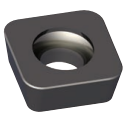



250 Series



250 Series End Mill - Dimensional Specifications

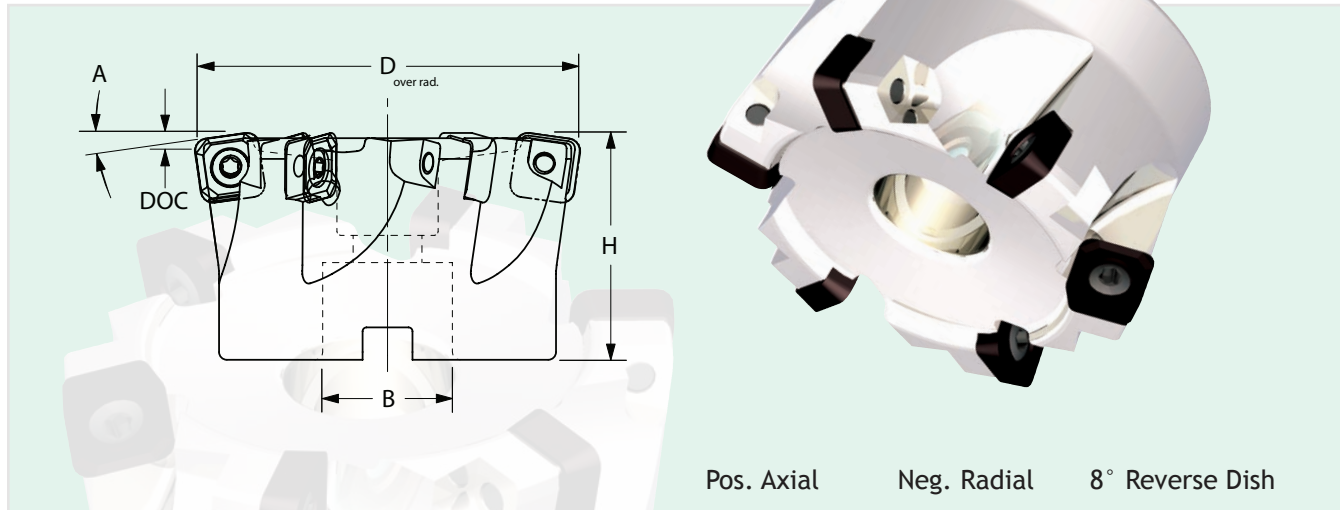
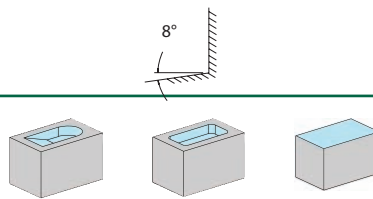
Product Number	D	S	L	A	DOC	Insert	Screw	Teeth
250E0125ASP4-S100R	1.250	1.000	6.00	8°	.040	SPEX-436	3605-0001-0023	2
						SPCW-436W820	3605-0001-0067	
250E0150ASP4-S125R	1.500	1.250	6.00	8°	.040	SPEX-436	3605-0001-0023	3
						SPCW-436W820	3605-0001-0067	

Accessory Parts

Insert IC x Thickness					
	Insert see page 41	Insert see page 41	Torx Screw for SPEX inserts	Torx Screw for SPCW inserts	Wrench
.375 x .220	SPEX-436	SPCW-436W820	3605-0001-0023	3605-0001-0067	1557-TX20

Positive Face Mills

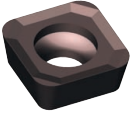
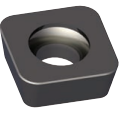



250 Series



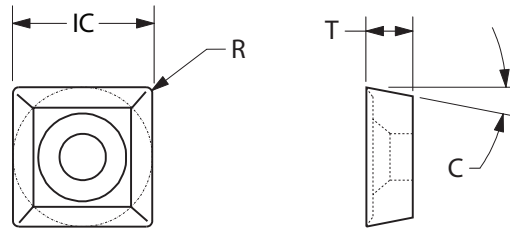
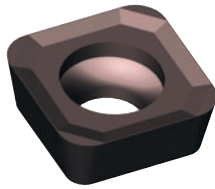
250 Series Face Mill - Dimensional Specifications

Product Number	D	B	H	A	DOC	Insert	Screw	Teeth
250F0200ASP4-075R	2.000	0.750	1.56	8°	.040	SPEX-436	3605-0001-0023	4
						SPCW-436W820	3605-0001-0067	
250F0300ASP4-100R	3.000	1.000	1.75	8°	.040	SPEX-436	3605-0001-0023	6
						SPCW-436W820	3605-0001-0067	
250F0400ASP4-150R	4.000	1.500	2.00	8°	.040	SPEX-436	3605-0001-0023	7
						SPCW-436W820	3605-0001-0067	

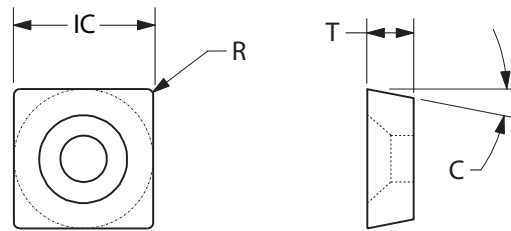
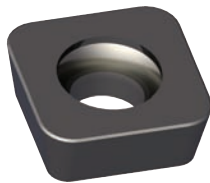
Accessory Parts

Insert IC x Thickness					
	Insert see page 41	Insert see page 41	Torx Screw for SPEX inserts	Torx Screw for SPCW inserts	Wrench
.375 x .220	SPEX-436	SPCW-436W820	3605-0001-0023	3605-0001-0067	1557-TX20

250 Series



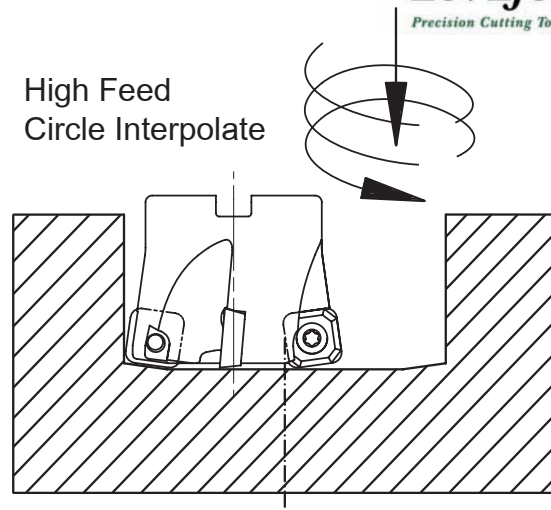
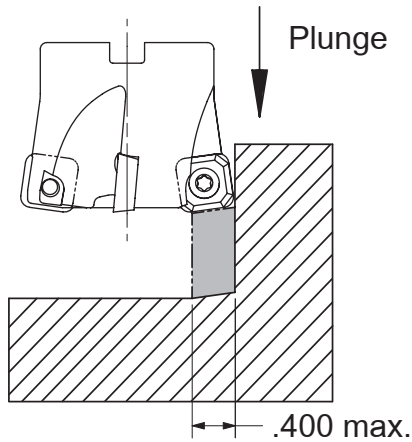
Insert Dimensional & Grade Specifications									
Insert Number	IC	T	R	C	LT-4073B	LT-2373B	908XRm	LTC-1200	
SPEX-436	0.500	0.188	0.094	11°					



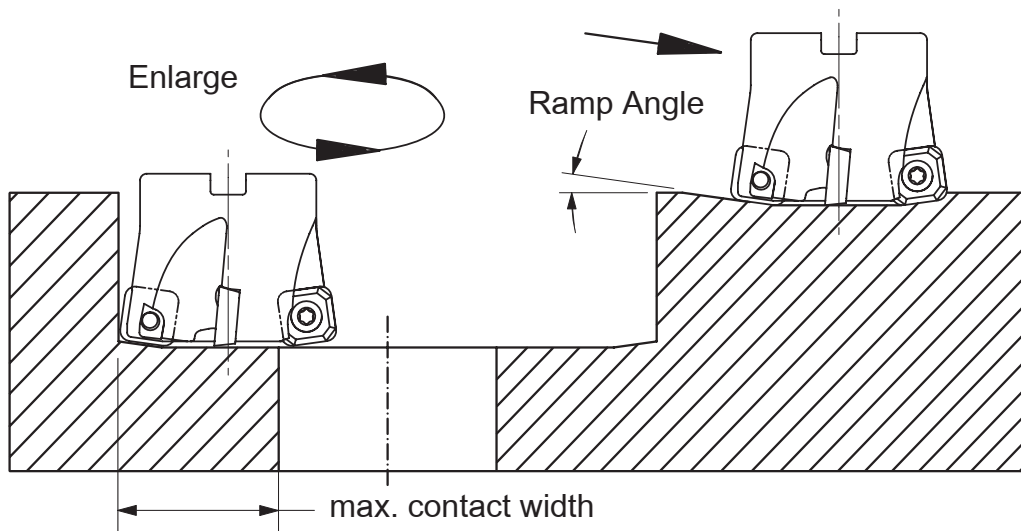
Insert Dimensional & Grade Specifications									
Insert Number	IC	T	R	C	LT-4073B	LT-2373B	908XRm	LTC-1200	
SPCW-436W820	0.500	0.188	0.094	11°					

250 Series High Feed Cutter - Speeds and Feeds Machining Parameters				
Material	SFM	Feed / Tooth	Max. D.O.C.	Insert
Low Carbon Steel	650 - 750	.020 - .060	0.040	SPEX-436 GR LT-4073B
Alloy Steel	500 - 600	.020 - .060	0.040	SPEX-436 GR LT-4073B
Austenitic Stainless	550 - 650	.020 - .060	0.040	SPEX-436 GR LT-2373B
Martensitic Stainless	500 - 550	.020 - .060	0.040	SPEX-436 GR LT-2373B
Aluminum	1000 +	.020 - .060	0.040	SPEX-436 GR 908XRm
▼ Gray Cast Iron	2500 - 2800	.020 - .060	0.040	SPCW-436W820 LTC-1200
■ Gray & Ductile Iron	750 - 850	.020 - .060	0.040	SPEX-436 GR LT-2373B
Titanium / Supper Alloys	80 - 150	.020 - .060	0.040	SPEX-436 GR 908XRm

P = Steel
 M = Stainless
 K = Cast Iron
 N = Non-Ferrous
 S = High Temp Alloy



250 Series - Min. Max. Bores for Circle Interpolation				
Tool Dia.	Min. Bore	Max. Bore	Ramp Depth	Ramp Angle
1.25	1.700	2.338	0.040	6°
1.50	2.200	2.838	0.040	3° 30'
2.00	3.200	3.838	0.040	2°
3.00	5.200	5.838	0.040	1°
4.00	7.200	7.838	0.040	0° 30'



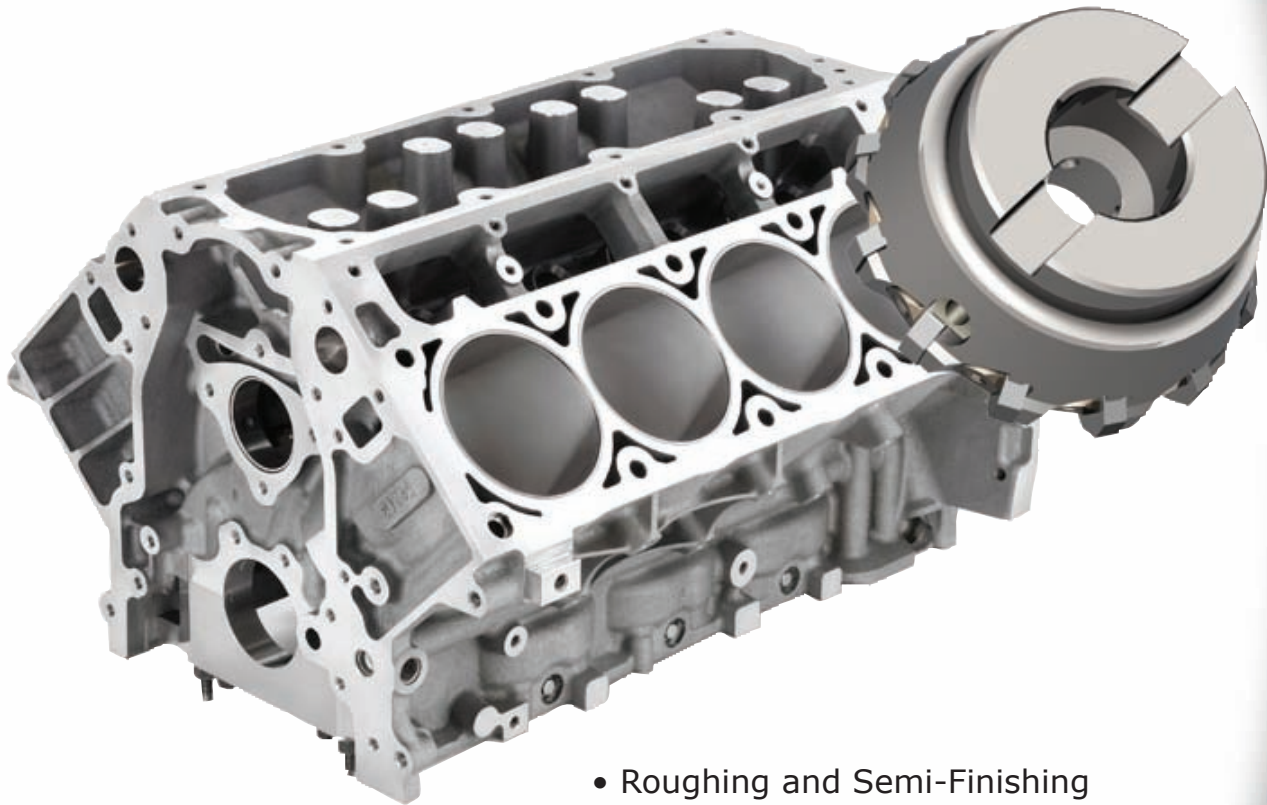
250 Series - Parameters			
Tool Dia.	Contact Width	Ramp Depth	Ramp Angle
1.25	0.840	0.040	6°
1.50	1.090	0.040	3° 30'
2.00	1.590	0.040	2°
3.00	2.590	0.040	1°
4.00	3.590	0.040	0° 30'

651 Series Tooling

LOVEJOY
Precision Cutting Tools



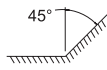
- 16 Cutting Edges
- Positive chip control inserts
- Medium and Fine Pitch
- Medium Pitch for General Machining
- Fine Pitch for High Production short chip materials like cast iron



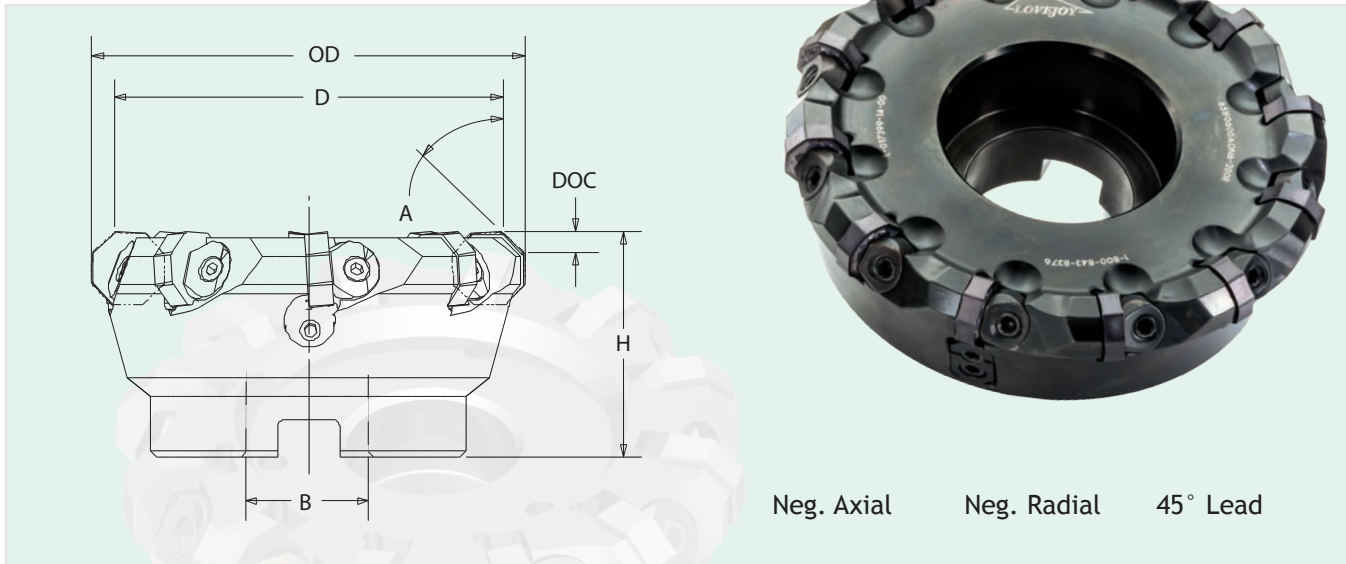
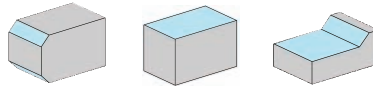
- Roughing and Semi-Finishing

1-800-843-8376
www.lovejoytool.com

Negative Face Mills - 45° Shoulder



651 Series



Neg. Axial Neg. Radial 45° Lead

651 Series Face Mills - Dimensional Specifications

Product Number	D	OD	B	H	A	DOC	Insert	# Stations	# Wiper Sta.
651F0300AON6-125R	3.000	3.47	1.250	2.310	45°	.200	ONEG-644-P1_	6	0
651F0300BON6-125R	3.000	3.47	1.250	2.310	45°	.200	ONEG-644-P1_	9	0
651F0400AON6-150R	4.000	4.46	1.500	2.310	45°	.200	ONEG-644-P1_	8	2
651F0400BON6-150R	4.000	4.46	1.500	2.310	45°	.200	ONEG-644-P1_	12	3
651F0500AON6-150R	5.000	5.46	1.500	2.310	45°	.200	ONEG-644-P1_	10	2
651F0500BON6-150R	5.000	5.46	1.500	2.310	45°	.200	ONEG-644-P1_	15	3
651F0600AON6-200R	6.000	6.46	2.000	2.310	45°	.200	ONEG-644-P1_	12	3
651F0600BON6-200R	6.000	6.46	2.000	2.310	45°	.200	ONEG-644-P1_	18	3
651F0800AON6-UNVR	8.000	8.45	2.500	2.310	45°	.200	ONEG-644-P1_	16	4
651F0800AON6-UNVR	8.000	8.45	2.500	2.310	45°	.200	ONEG-644-P1_	24	6

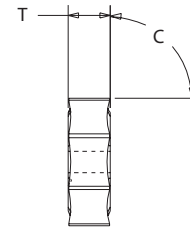
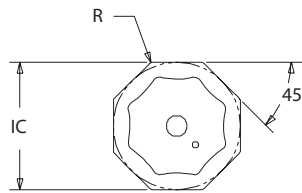
ONEG inserts have 16 cutting edges

Accessory Parts

Insert IC & Thickness	Insert IC & Thickness Silicon Nitride	Lock	Lock Screw	Lock Screw	Adj. Pin
ONEG-644-P1_	ONC-644W820	3502-1133-5003	1451	1452	3505-2350-0025

Inserts

651 Series



Insert Dimensional & Grade Specifications

Insert Number	IC	T	R	C	Roughing
ONEG-644-P1	0.750	0.250	0.032	0°	588XRm

Insert Dimensional & Grade Specifications

Insert Number	IC	T	R	C	Roughing
ONEG-644-K1B	0.750	0.250	0.032	0°	608JRm

Machining Parameters

Material	SFPM	FPT	Roughing
Steel	400 - 1000	.005 - .015	ONEG-644-P1B GR 608XRm
Cast Iron	400 - 1200	.005 - .015	ONEG-644-P1A GR 588XRm
Stainless Steel	300 - 700	.005 - .015	ONEG-644-P1 GR 589XRm

P = Steel
 M = Stainless
 K = Cast Iron
 N = Non-Ferrous
 S = High Temp Alloy

Just Got Better!

- Excellent Lubricity
- Minimizes Build-up
- Extremely Smooth Surface
- Sharp Cutting Edge

New!

New Grade - 908XRm!
for cutting Aluminum

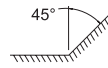


XR4 & XR45
Face Mills

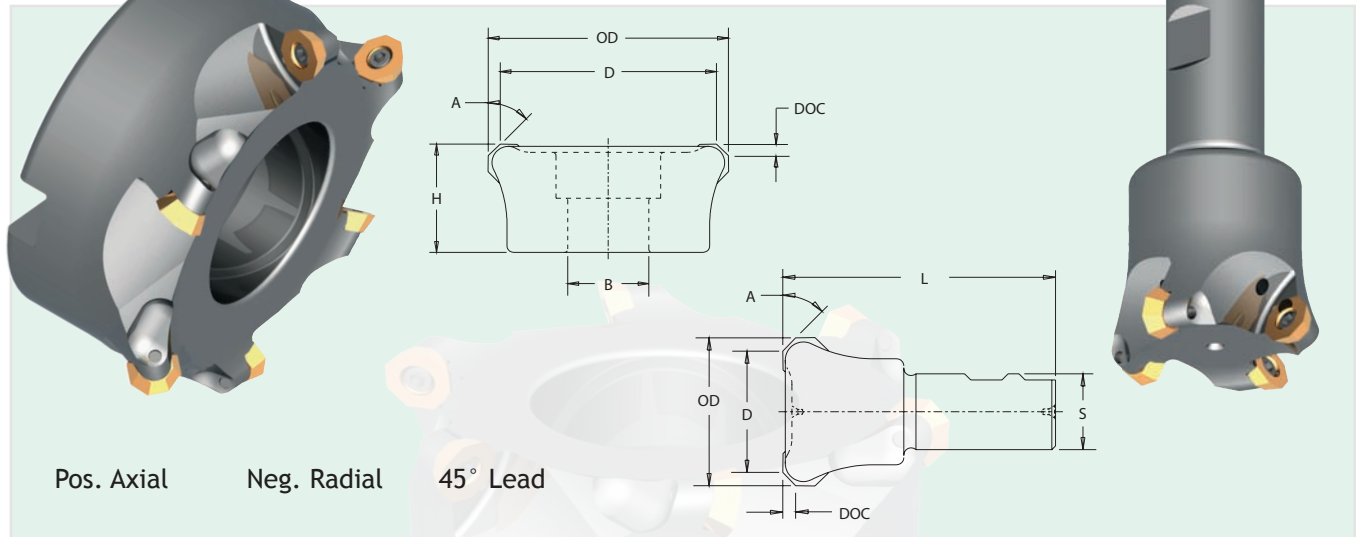
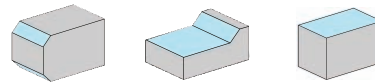


XR4 & XR45
End Mills

Positive Face Mills - 45° Shoulder



XR4 Series - 1/2" IC



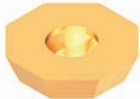
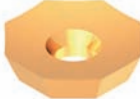
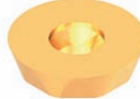



XR4 Series End Mills - Dimensional Specifications

Product Number	D	OD	S	L	A	Max DOC	Teeth
					OECH / RECH	OECH / RECH	
XRE1.25PN45OE4RW.75	1.250	1.55	0.750	4.25	45° / R.250	.140 / R.250	3
XRE1.50PN45OE4RW.75	1.500	1.80	0.750	4.25	45° / R.250	.140 / R.250	3
XRE2.00PN45OE4RW1.00	2.000	2.30	1.000	4.50	45° / R.250	.140 / R.250	4
XRE2.00PN45OE4RW1.25	2.000	2.30	1.250	4.50	45° / R.250	.140 / R.250	4
XRE2.50PN45OE4RW1.25	2.500	2.79	1.250	4.50	45° / R.250	.140 / R.250	5

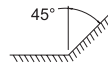
XR4 Series Face Mills - Dimensional Specifications

Product Number	D	OD	B	H	A	Max DOC	Teeth
					OECH / RECH	OECH / RECH	
XRF2.00PN45OE4R.75	2.000	2.30	0.750	2.000	45° / R.250	.140 / R.250	4
XRF2.50PN45OE4R.75	2.500	2.80	0.750	2.000	45° / R.250	.140 / R.250	5
XRF3.00PN45OE4R1.00	3.000	3.30	1.000	2.000	45° / R.250	.140 / R.250	6
XRF4.00PN45OE4R1.50	4.000	4.29	1.500	2.000	45° / R.250	.140 / R.250	6

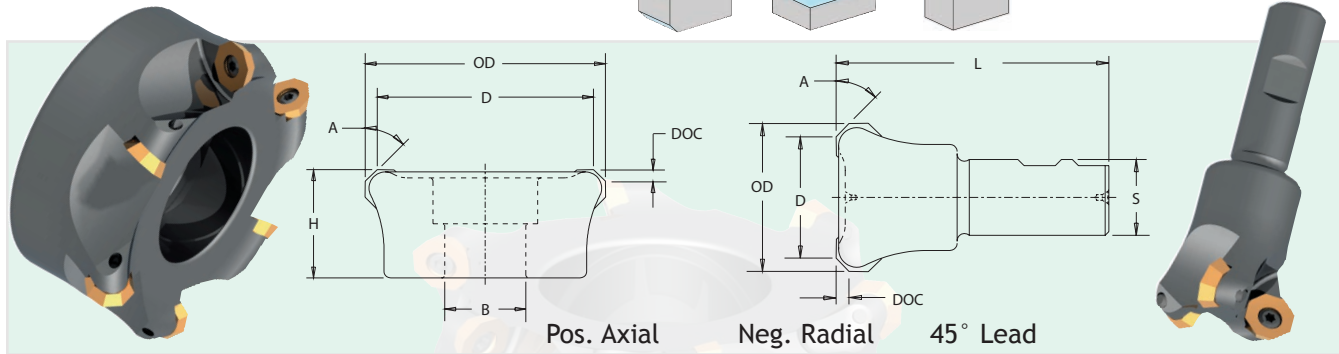
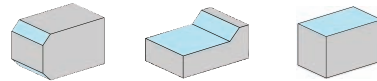
Accessory Parts

Insert IC x Thickness						
	Insert see page 49	Insert see page 49	Insert see page 49	Insert see page 49	Insert Screw	Wrench
.500 x .188	OECH-432_	OECH-432-10F	RECH-43_	RECH-43-10F	3605-0001-0033	1557-TX15

Positive Face Mills - 45° Shoulder



XR45 Series - 5/8" & 3/4" IC




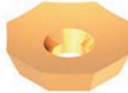
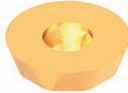
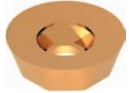


XR45 Series End Mills - Dimensional Specifications

Product Number	D	OD	S	L	A		Max DOC		Teeth
					OECH / RECH	OECH / RECH	OECH / RECH	OECH / RECH	
XRE1.25PN45OE5RW.75	1.250	1.616	0.750	4.25	45° / R.312	.173 / R.312	.173 / R.312	.173 / R.312	2
XRE1.25PN45OE5RW1.00	1.250	1.616	0.750	4.50	45° / R.312	.173 / R.312	.173 / R.312	.173 / R.312	2
XRE1.50PN45OE5RW.75	1.500	1.866	0.750	4.25	45° / R.312	.173 / R.312	.173 / R.312	.173 / R.312	3
XRE1.50PN45OE5RW1.00	1.500	1.866	1.000	4.50	45° / R.312	.173 / R.312	.173 / R.312	.173 / R.312	3
XRE2.00PN45OE5RW1.00	2.000	2.366	1.000	4.50	45° / R.312	.173 / R.312	.173 / R.312	.173 / R.312	3
XRE2.00PN45OE5RW1.25	2.000	2.366	1.250	4.50	45° / R.312	.173 / R.312	.173 / R.312	.173 / R.312	3
XRE2.50PN45OE5RW1.25	2.500	2.866	1.250	4.50	45° / R.312	.173 / R.312	.173 / R.312	.173 / R.312	4
XRE2.00PN45OE6RW1.25	2.000	2.440	1.250	4.50	45° / R.375	.208 / R.375	.208 / R.375	.208 / R.375	3
XRE2.50PN45OE6RW1.25	2.500	2.940	1.250	4.50	45° / R.375	.208 / R.375	.208 / R.375	.208 / R.375	4

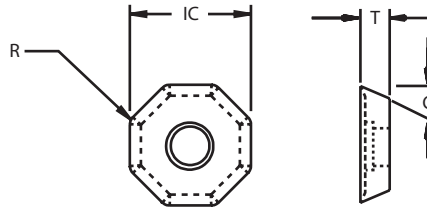
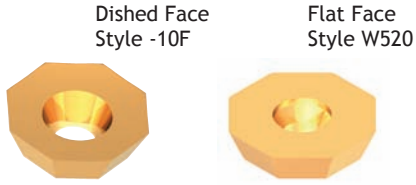
XR45 Series Face Mills - Dimensional Specifications

Product Number	D	OD	B	H	A		Max DOC		Teeth
					OECH / RECH	OECH / RECH	OECH / RECH	OECH / RECH	
XRF2.00PN45OE5R.75	2.000	2.366	0.750	2.000	45° / R.312	.173 / R.312	.173 / R.312	.173 / R.312	3
XRF2.50PN45OE5R1.00	2.500	2.866	1.000	2.000	45° / R.312	.173 / R.312	.173 / R.312	.173 / R.312	4
XRF3.00PN45OE5R1.00	3.000	3.366	1.000	2.000	45° / R.312	.173 / R.312	.173 / R.312	.173 / R.312	5
XRF4.00PN45OE5R1.50	4.000	4.366	1.500	2.000	45° / R.312	.173 / R.312	.173 / R.312	.173 / R.312	6
XRF5.00PN45OE5R1.50	5.000	5.366	1.500	2.000	45° / R.312	.173 / R.312	.173 / R.312	.173 / R.312	6
XRF2.00PN45OE6R.75	2.000	2.440	0.750	2.000	45° / R.375	.208 / R.375	.208 / R.375	.208 / R.375	3
XRF2.50PN45OE6R1.00	2.500	2.940	1.000	2.000	45° / R.375	.208 / R.375	.208 / R.375	.208 / R.375	4
XRF3.00PN45OE6R1.00	3.000	3.440	1.000	2.000	45° / R.375	.208 / R.375	.208 / R.375	.208 / R.375	4
XRF4.00PN45OE6R1.50	4.000	4.440	1.500	2.000	45° / R.375	.208 / R.375	.208 / R.375	.208 / R.375	5
XRF5.00PN45OE6R1.50	5.000	5.440	1.500	2.000	45° / R.375	.208 / R.375	.208 / R.375	.208 / R.375	6
XRF6.00PN45OE6R2.00	6.000	6.440	2.000	2.000	45° / R.375	.208 / R.375	.208 / R.375	.208 / R.375	7
XRF8.00PN45OE5R2.00	8.000	8.380	2.000	2.000	45° / R.312	.173 / R.312	.173 / R.312	.173 / R.312	9

Accessory Parts

Insert IC x Thickness						
	Insert see page 49	Insert see page 49	Insert see page 49	Insert see page 49	Insert Screw	Wrench
.625 x .188	OECH-534W520	OECH-534-10F	RECH-53W520	RECH-53-10F	3605-0001-0023	1557-TX20
.750 x .188	OECH-634W520	OECH-634-10F	RECH-63W520	RECH-63-10F		

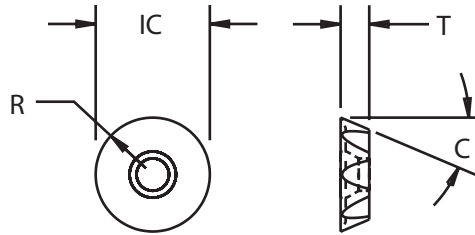
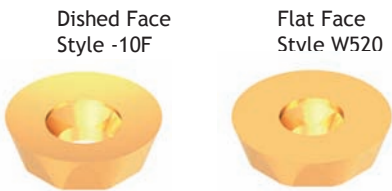
XR4 & XR45 Series



New!

Octagon Insert Dimensional & Grade Specifications

Insert Number	IC	T	R	C	Geometry	586XRm	606jRm	908XRm
OECH-432-10F	0.500	0.188	0.032	23°	+10° Dish	•	•	•
OECH-432W520	0.500	0.188	0.032	23°	Flat w/land	•	•	•
OECH-534-10F	0.625	0.188	0.062	23°	+10° Dish	•	•	•
OECH-534W520	0.625	0.188	0.062	23°	Flat w/land	•	•	•
OECH-634-10F	0.750	0.188	0.062	23°	+10° Dish	•	•	•
OECH-634W520	0.750	0.188	0.062	23°	Flat w/land	•	•	•



New!

Round Insert Dimensional & Grade Specifications

Insert Number	IC	T	R	C	Geometry	586XRm	606jRm	908XRm
RECH-43-10F	0.500	0.188	0.250	23°	+10° Dish	•	•	•
RECH-43W520	0.500	0.188	0.250	23°	Flat w/land	•	•	•
RECH-53-10F	0.625	0.188	0.312	23°	+10° Dish	•	•	•
RECH-53W520	0.625	0.188	0.312	23°	Flat w/land	•	•	•
RECH-63-10F	0.750	0.188	0.375	23°	+10° Dish	•	•	•
RECH-63W520	0.750	0.188	0.375	23°	Flat w/land	•	•	•

Machining Parameters

Material	SFPM	FPT	Primary	Secondary
PH Type Stainless Steel 17-4, 15-5, 13-8	500 - 1200	.003 - .015	OECH-_34-10F GR 606jRm	RECH-_3-10F GR 586XRm
Austenitic Stainless Steel 302, 304, 316	400 - 1350	.003 - .015	OECH-_34-10F GR 586XRm	RECH-_3-10F GR 586XRm
Titanium Alloy 3A1-2.5V, 5A16Sn-2Zr-1mo, 6A14V	125 - 325	.003 - .015	RECH-_3-10F GR 908XRm	RECH-_3-10F GR 586XRm
Nickel Based Material K-Mongel, Inconel 625, A286	100 - 650	.003 - .015	RECH-_3-10F GR 586XRm	RECH-_3-10F GR 586XRm
Carbon Steel 1018, 1020, 1215	600 - 1500	.005 - .020	OECH-_34-10F GR 606jRm	RECH-_3W520 GR 606jRm
Alloyed Steel 4130, 4340, 6150	400 - 1200	.005 - .020	OECH-_34W520 GR 606jRm	RECH-_3W520 GR 606jRm
Tool Steel	350 - 1000	.005 - .020	OECH-_34W520 GR 606jRm	RECH-_3W520 GR 606jRm
Ductile Iron	500 - 900	.003 - .015	OECH-_34W520 GR 606jRm	OECH-_34W520 GR 606jRm
Gray Iron	500 - 900	.003 - .015	OECH-_34W520 GR 586XRm	OECH-_34W520 GR 586XRm
Aluminum 2024, 6061, 7072	900 - 4000	.003 - .015	OECH-_34-10F GR 908XRm	RECH-_3-10F GR 908XRm

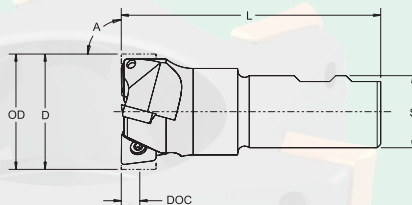
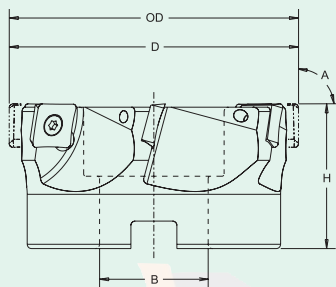
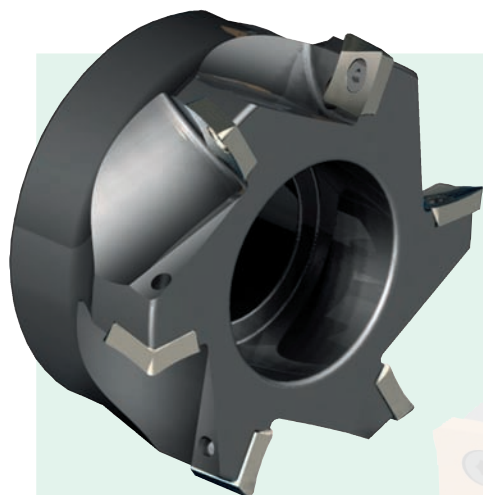
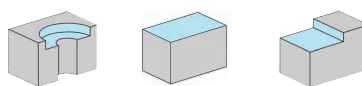
H = Hard Steel

P = Steel **M** = Stainless **K** = Cast Iron **N** = Non-Ferrous **S** = High Temp Alloy

Positive Face Mills - 90° Shoulder



XR90 Series



Pos. Axial Neg. Radial 90° Lead

XR90 Series End Mills - Dimensional Specifications

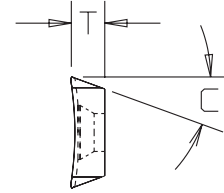
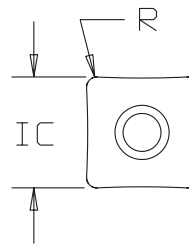
Product Number	D	OD	S	L	A	DOC	Teeth
XRE1.50PN90SE5RW.75	1.500	1.50	0.750	4.25	90°	0.540	2
XRE1.50PN90SE5RW1.00	1.500	1.50	1.000	4.50	90°	0.540	2
XRE2.00PN90SE5RW1.25	2.000	2.00	1.250	4.50	90°	0.540	3

XR90 Series Face Mills - Dimensional Specifications

Product Number	D	OD	B	H	A	DOC	Teeth
XRF2.00PN90SE5R.75	2.000	2.00	0.750	2.000	90°	0.540	3
XRF2.50PN90SE5R1.00	2.500	2.50	1.000	2.000	90°	0.540	4
XRF3.00PN90SE5R1.00	3.000	3.00	1.000	2.000	90°	0.540	5
XRF4.00PN90SE5R1.50	4.000	4.00	1.500	2.000	90°	0.540	6
XRF5.00PN90SE5R1.50	5.000	5.00	1.500	2.000	90°	0.540	7
XRF6.00PN90SE5R2.00	6.000	6.00	2.000	2.000	90°	0.540	7

Accessory Parts

Insert IC x Thickness				
	Insert see page 52	Insert see page 52	Insert Screw	Wrench
.500 x .188	SECH-534-10F	SECH-534_	3605-0001-0023	1557-TX20



New!

Insert Dimensional & Grade Specifications																				
Insert Number	IC	T	R	C	Geometry	586XRm					606jRm			908XRm						
SECH-534	0.625	0.188	0.062	23°	Flat	•	•	•	•	•	•	•	•	•	•	•	•	•	•	•
SECH-534-10F	0.625	0.188	0.062	23°	+10° Dish	•	•	•	•	•	•	•	•	•	•	•	•	•	•	•
SECH-534W520	0.625	0.188	0.062	23°	Flat w/land	•	•	•	•	•	•	•	•	•	•	•	•	•	•	•

Machining Parameters					
Material	SFPM	FPT	Primary	Secondary	
PH Type Stainless Steel 17-4, 15-5, 13-8	500 - 1200	.003 - .015	SECH-534-10F GR 606jRm	SECH-534W520 GR LTC-14	
Austenitic Stainless Steel 302, 304, 316	400 - 1350	.003 - .015	SECH-534-10F GR 586XRm	SECH-534W520 GR LTC-10	
Titanium Alloy 3A1-2.5V, 5A16Sn-2Zr-1mo, 6A14V	120 - 325	.003 - .015	SECH-534-10F GR 586XRm	SECH-534-10F GR LTC-10	
Carbon Steel 1018, 1020, 1215	600 - 1500	.005 - .020	SECH-534W520 GR 606jRm	SECH-534W520 GR LTC-14	
Alloyed Steel 4130, 4340, 6150	400 - 1200	.005 - .020	SECH-534W520 GR 606jRm	SECH-534W520 GR LTC-14	
Tool Steel	350 - 1000	.005 - .020	SECH-534W520 GR 606jRm	SECH-534W520 GR LTC-14	
Aluminum 2024, 6061, 7072	900 - 4000	.003 - .015	SECH-534-10F GR 908XRm	SECH-534-10F GR LTC-10	

H = Hard Steel

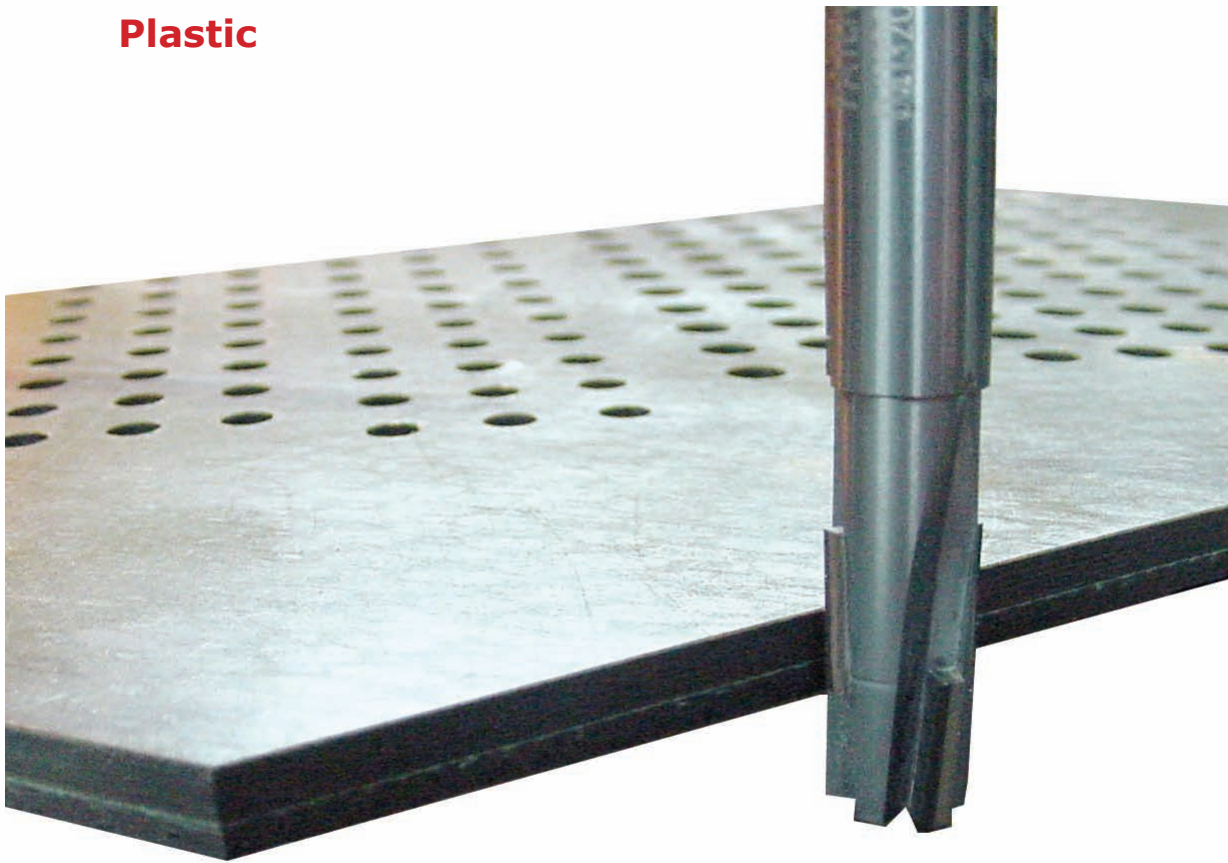
P = Steel **M** = Stainless **K** = Cast Iron **N** = Non-Ferrous **S** = High Temp Alloy

Composites (CFRP)

Aluminum

Oxygen Free Copper

Plastic



Remove Material Clean, Fast and NO DELAMINATION!

PCD High Helix End Mill

Patent Pending



Item No.	Diameter	Shank	O.A.L.	Flute Length	# of Flutes
HH0250-025B130-S025R031	0.250	0.250	2.50	0.250	3
HH0375-050C130-S038R031	0.375	0.375	3.00	0.500	4
HH0500-075C130-S050R031	0.500	0.500	3.00	0.750	4

Other sizes available upon request

PCD High Helix End Mill with Center Cutting Tip

Patent Pending



Item No.	Diameter	Shank	O.A.L.	Flute Length	# of Flutes
HC0250-025B130-S025R031	0.250	0.250	2.50	0.250	2
HC0375-050C130-S038R031	0.375	0.375	3.00	0.500	2
HC0500-075C130-S050R031	0.500	0.500	3.00	0.750	3

Other sizes available upon request

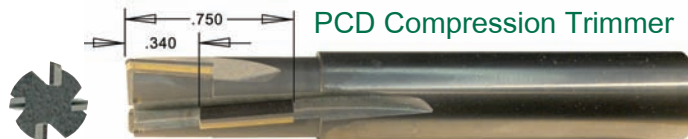
obtain flyer



Scan QR Code for more info

PCD Compression Trimmer

Patent Pending

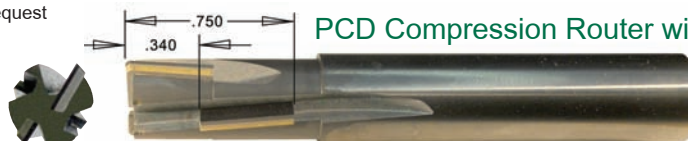


Item No.	Diameter	Shank	O.A.L.	Flute Length	# of Flutes
CT0375-075C130-S038R031	0.375	0.375	3.00	0.750	4
CT0500-075C130-S050R031	0.500	0.500	3.00	0.750	4

Other sizes available upon request

PCD Compression Router with Center Cutting Tip

Patent Pending

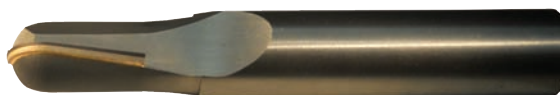


Item No.	Diameter	Shank	O.A.L.	Flute Length	# of Flutes
CC0375-075C130-S038R031	0.375	0.375	3.00	0.750	4
CC0500-075C130-S050R031	0.500	0.500	3.00	0.750	4

Other sizes available upon request

PCD Ball Nose with Center Cutting

Patent Pending



Item No.	Diameter	Shank	O.A.L.	Flute Length	# of Flutes
BH0250-025B130-S025R125	0.250	0.250	2.50	0.250	2
BH0375-050C130-S038R188	0.375	0.375	3.00	0.500	2
BH0500-075C130-S050R250	0.500	0.500	3.00	0.750	2

Other sizes available upon request

Special PCD Tooling



Profiling Tools

0503-1340-0001
Ball Nose
End Mill

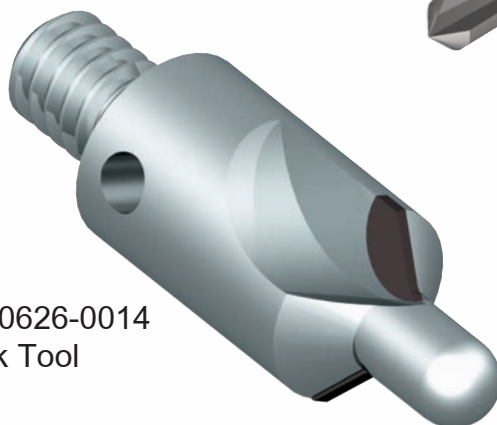


0503-1300-0001 Profile
Taper Tool

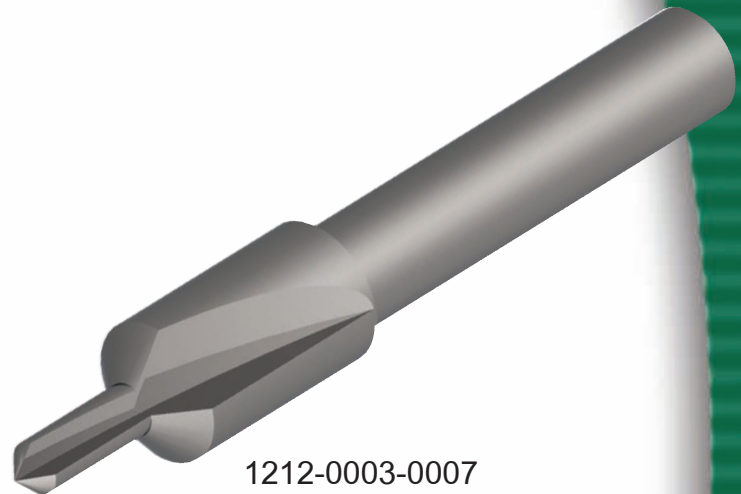


Counter Sinks

0507-0626-0014
C'Sink Tool



1212-0003-0007
C'Sink Tool
Diamond Coated Solid Carbide



1-800-843-8376
www.lovejoytool.com

Mill Kits



End Mill & Face Mill Kits Include:

- a. cutter
- b. inserts
- c. screws
- d. wrench
- e. anti-seize

205 Kits



Kit Contents:

- 1 Cutter
- 8 Inserts
- 2 Screws
- 1 Wrench
- Anti-Seize



End Mill Kits						
Diameter	Product Number	Kit Number	Teeth	Insert	Grade	
.375	205E0037ASM2-W050R	205E0037-KIT-586XRM	1	SPEX-22_	586XRm	
.375	205E0037BSM2-W050R	205E0037-KIT-586XRM-B	1	SPEX-22_	586XRm	
.375	205E0037ASM2-W050R	205E0037-KIT-606JRM	1	SPEX-22_	606jRm	
.375	205E0037BSM2-W050R	205E0037-KIT-606JRM-B	1	SPEX-22_	606jRm	
.437	205E0043ASM2-W050R	205E0043-KIT-586XRM	1	SPEX-22_	586XRm	
.437	205E0043BSM2-W050R	205E0043-KIT-586XRM-B	1	SPEX-22_	586XRm	
.437	205E0043ASM2-W050R	205E0043-KIT-606JRM	1	SPEX-22_	606jRm	
.437	205E0043BSM2-W050R	205E0043-KIT-606JRM-B	1	SPEX-22_	606jRm	
.500	205E0050ASM2-W050R	205E0050-KIT-586XRM	1	SPEX-22_	586XRm	
.500	205E0050BSM2-W050R	205E0050-KIT-586XRM-B	1	SPEX-22_	586XRm	
.500	205E0050ASM2-W050R	205E0050-KIT-606JRM	1	SPEX-22_	606jRm	
.500	205E0050BSM2-W050R	205E0050-KIT-606JRM-B	1	SPEX-22_	606jRm	
.625	205E0062ASM2-W062R	205E0062-KIT-586XRM	2	SPEX-22_	586XRm	
.625	205E0062ASM2-W062R	205E0062-KIT-606JRM	2	SPEX-22_	606jRm	
.750	205E0075ASM2-W075R	205E0075-KIT-586XRM	3	SPEX-22_	586XRm	
.750	205E0075ASM2-W075R	205E0075-KIT-606JRM	3	SPEX-22_	606jRm	
1.000	205E0100ASM2-W075R	205E0100-KIT-586XRM	4	SPEX-22_	586XRm	
1.000	205E0100ASM2-W075R	205E0100-KIT-606JRM	4	SPEX-22_	606jRm	
1.250	205E0125ASM2-W100R	205E0125-KIT-586XRM	4	SPEX-22_	586XRm	
1.250	205E0125ASM2-W100R	205E0125-KIT-606JRM	4	SPEX-22_	606jRm	
1.500	205E0150ASM2-W100R	205E0150-KIT-586XRM	4	SPEX-22_	586XRm	
1.500	205E0150ASM2-W100R	205E0150-KIT-606JRM	4	SPEX-22_	606jRm	
Face Mill Kits						
2.000	205F0200ASP2-075R	205F0200-KIT-586XRM	5	SPEX-22_	586XRm	
2.000	205F0200ASP2-075R	205F0200-KIT-606JRM	5	SPEX-22_	606jRm	

207 Kits



APKT-1003-PDSR

Kit Contents:
 1 Cutter
 10 Inserts
 1 Wrench
 2 Screws
 Anti-Seize



207E0075-KIT-LT-7175

End Mill Kits					
Diameter	Product Number	Kit Number	Teeth	Insert	Grade
.625	207E0062AAP2-W062RC	207E0062-KIT-LT-1475	2	APKT-1003_	LT-1475
.625	207E0062AAP2-W062RC	207E0062-KIT-LT-7175	2	APKT-1003_	LT-7175
.625	207E0062BAP2-W062RC	207E0062-KIT-LT-7175-B	2	APKT-1003_	LT-7175
.750	207E0075AAP2-W075RC	207E0075-KIT-LT-1475	3	APKT-1003_	LT-1475
.750	207E0075AAP2-W075RC	207E0075-KIT-LT-7175	3	APKT-1003_	LT-7175
.750	207E0075BAP2-S075RC	207E0075-KIT-LT-7175-B	3	APKT-1003_	LT-7175
1.000	207E0100AAP2-W075RC	207E0100-KIT-LT-1475	4	APKT-1003_	LT-1475
1.000	207E0100AAP2-W075RC	207E0100-KIT-LT-7175	4	APKT-1003_	LT-7175
1.000	207E0100BAP2-S075RC	207E0100-KIT-LT-7175-B	4	APKT-1003_	LT-7175
1.250	207E0125AAP2-W100RC	207E0125-KIT-LT-1475	5	APKT-1003_	LT-1475
1.250	207E0125AAP2-W100RC	207E0125-KIT-LT-7175	5	APKT-1003_	LT-7175
1.250	207E0125BAP2-S100RC	207E0125-KIT-LT-7175-B	5	APKT-1003_	LT-7175
1.500	207E0150AAP2-W125RC	207E0150-KIT-LT-1475	6	APKT-1003_	LT-1475
1.500	207E0150AAP2-W125RC	207E0150-KIT-LT-7175	6	APKT-1003_	LT-7175
1.500	207E0150BAP2-S125RC	207E0150-KIT-LT-7175-B	6	APKT-1003_	LT-7175

215 Kits



215E-KIT-1.00-1.00



APKX-1505_

Kit Contents:
 1 Cutter
 10 Inserts
 2 Screws
 1 Wrench
 Anti-Seize



215F-KIT-1.50-0.75

End Mill Kits				
Diameter	Product Number	Kit Number	Teeth	Insert
1.000	215E0100AAP3-W100RC	215E-KIT-1.00-1.00	2	APKX-1505_
1.000	215E0100BAP3-S100RC	215E-KIT-1.00-1.00-B	2	APKX-1505_
1.250	215E0125AAP3-W125RC	215E-KIT-1.25-1.25	3	APKX-1505_
1.250	215E0125BAP3-S125RC	215E-KIT-1.25-1.25-B	3	APKX-1505_
1.500	215E0150AAP3-W125RC	215E-KIT-1.50-1.25	4	APKX-1505_
Face Mill Kits				
1.500	215F0150AAP3-075R	215F-KIT-1.50-0.75	4	APKX-1505_
2.000	215F0200AAP3-075R	215F-KIT-2.00-0.75	5	APKX-1505_
2.500	215F0250AAP3-100R	215F-KIT-2.50-1.00	6	APKX-1505_
3.000	215F0300AAP3-100R	215F-KIT-3.00-1.00	7	APKX-1505_
4.000	215F0400AAP3-150R	215F-KIT-4.00-1.50	8	APKX-1505_

217 Kits



APKT-1003-PDER

Kit Contents:

- 1 Cutter
- 10 Inserts
- 2 Screws
- 1 Wrench
- Anti-Seize



217F-KIT-2.00-0.75

Note: This tooling utilizes the unused corner of the APKT insert after using the APKT insert in the 207 Series End Mills and Face Mills

Face Mill Kits				
Diameter	Product Number	Kit Number	Teeth	Insert
2.000	217F0200AAP2-075R	217F-KIT-2.00-0.75	5	APKT-1003
2.250	217F0250AAP2-100R	217F-KIT-2.50-1.00	6	APKT-1003
3.000	217F0300AAP2-100R	217F-KIT-3.00-1.00	7	APKT-1003

222 Kits



222E-KIT-1.25-0.75



SPEX-32.52

Kit Contents:

- 1 Cutter
- 10 Inserts
- 2 Screws
- 1 Wrench
- Anti-Seize



222F-KIT-2.50-0.75

End Mill Kits				
Diameter	Product Number	Kit Number	Teeth	Insert
1.000	222E0100ASP3-W075R	222E-KIT-1.00-0.75	2	SPEX-32.5
1.250	222E0125ASP3-W075R	222E-KIT-1.25-0.75	3	SPEX-32.5
1.250	222E0125ASP3-W100R	222E-KIT-1.25-1.00	3	SPEX-32.5
1.500	222E0150ASP3-W075R	222E-KIT-1.50-0.75	4	SPEX-32.5
1.500	222E0150ASP3-W125R	222E-KIT-1.50-1.25	4	SPEX-32.5
Face Mill Kits				
Diameter	Product Number	Kit Number	Teeth	Insert
2.000	222F0200ASP3-075R	222F-KIT-2.00-0.75	5	SPEX-32.5
2.500	222F0250ASP3-075R	222F-KIT-2.50-0.75	6	SPEX-32.5
3.000	222F0300ASP3-100R	222F-KIT-3.00-1.00	7	SPEX-32.5

225 Kits



225E-KIT-1.25-0.75

Kit Contents:

- 1 Cutter
- 10 Inserts
- 2 Screws
- 1 Wrench
- Anti-Seize



SPEX-32.52



225F-KIT-2.50-0.75

End Mill Kits				
Diameter	Product Number	Kit Number	Teeth	Insert
1.000	225E0100ASP3-W075R	225E-KIT-1.00-0.75	2	SPEX-32.5
1.250	225E0125ASP3-W075R	225E-KIT-1.25-0.75	3	SPEX-32.5
1.250	225E0125ASP3-W100R	225E-KIT-1.25-1.00	3	SPEX-32.5
1.500	225E0150ASP3-W075R	225E-KIT-1.50-0.75	4	SPEX-32.5
1.500	225E0150ASP3-W125R	225E-KIT-1.50-1.25	4	SPEX-32.5
Face Mill Kits				
Diameter	Product Number	Kit Number	Teeth	Insert
2.000	225F0200ASP3-075R	225F-KIT-2.00-0.75	5	SPEX-32.5
2.500	225F0250ASP3-075R	225F-KIT-2.50-0.75	6	SPEX-32.5
3.000	225F0300ASP3-075R	225F-KIT-3.00-0.75	7	SPEX-32.5
3.000	225F0300ASP3-100R	225F-KIT-3.00-1.00	7	SPEX-32.5

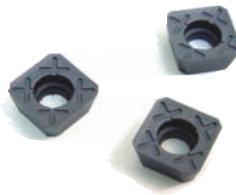
229 Kits



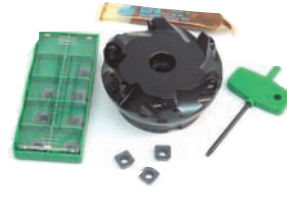
229E-KIT-1.25-0.75

Kit Contents:

- 1 Cutter
- 10 Inserts
- 2 Screws
- 1 Wrench
- Anti-Seize



SPEX-32.5A4M



229F-KIT-2.50-0.75

End Mill Kits				
Diameter	Product Number	Kit Number	Teeth	Insert
1.000	229E0100ASP3-W075R	229E-KIT-1.00-0.75	2	SPEX-32.5A4M_
1.250	229E0125ASP3-W075R	229E-KIT-1.25-0.75	3	SPEX-32.5A4M_
1.250	229E0125ASP3-W100R	229E-KIT-1.25-1.00	3	SPEX-32.5A4M_
1.500	229E0150ASP3-W075R	229E-KIT-1.50-0.75	4	SPEX-32.5A4M_
1.500	229E0150ASP3-W125R	229E-KIT-1.50-1.25	4	SPEX-32.5A4M_
Face Mill Kits				
2.000	229F0200ASP3-075R	229F-KIT-2.00-0.75	5	SPEX-32.5A4M_
2.500	229F0250ASP3-075R	229F-KIT-2.50-0.75	6	SPEX-32.5A4M_
3.000	229F0300ASP3-075R	229F-KIT-3.00-0.75	7	SPEX-32.5A4M_
3.000	229F0300ASP3-100R	229F-KIT-3.00-1.00	7	SPEX-32.5A4M_

245 Kits



SPEX-432

Kit Contents:

- 1 Cutter
- 10 Inserts
- 5 Screws
- 1 Wrench
- Anti-Seize



245F-KIT-2.50-586XRm

Face Mill Kits				
Diameter	Product Number	Kit Number	Teeth	Insert
2.000	245F0200ASP4-075R	245F-KIT-2.00	4	SPEX-432_
2.500	245F0250ASP4-100R	245F-KIT-2.50	5	SPEX-432_
3.000	245F0300ASP4-100R	245F-KIT-3.00	6	SPEX-432_
4.000	245F0400ASP4-150R	245F-KIT-4.00	7	SPEX-432_

249 Kits



SEHW-43A3M

Kit Contents:

- 1 Cutter
- 10 Inserts
- 5 Screws
- 1 Wrench
- Anti-Seize



249F-KIT-2.50-586XRm

Face Mill Kits				
Diameter	Product Number	Kit Number	Teeth	Insert
2.000	249F0200ASE4-075R	249F-KIT-2.00	4	SEHW-43A3M_
2.500	249F0250ASE4-100R	249F-KIT-2.50	5	SEHW-43A3M_
3.000	249F0300ASE4-100R	249F-KIT-3.00	6	SEHW-43A3M_
4.000	249F0400ASE4-150R	249F-KIT-4.00	6	SEHW-43A3M_

250 Kits



250E-KIT_



SPCW-__



SPEX-__

Kit Contents:

- 1 Cutter
- 10 Inserts
- 2 Screws
- 1 Wrench
- Anti-Seize



250F-KIT_

End Mill Kits				
Diameter	Product Number	Kit Number	Teeth	Insert
1.250	250E0125ASP4-S100R	250E-KIT-1.25-S100	2	SPEX-436 SPCW-436W820
1.500	250E0150ASP4-S125R	250E-KIT-1.50-S125	3	SPEX-436 SPCW-436W820
Face Mill Kits				
2.000	250F0200ASP4-075R	250F-KIT-2.00-0.75	4	SPEX-436 SPCW-436W820
3.000	250F0300ASP4-100R	250F-KIT-3.00-1.00	6	SPEX-436 SPCW-436W820
4.000	250F0400ASP4-150R	250F-KIT-4.00-1.50	7	SPEX-436 SPCW-436W820

255 Kits



255E-KIT-2.00-6-.75



RECH-63_

Kit Contents:

- 1 Cutter
- 10 Inserts
- 2 Screws
- 1 Wrench
- Anti-Seize

NOTE:
Same as XR series except the diameter is held over the round inserts at MAX. OD.



255F-KIT-3.00-6

End Mill Kits				
Diameter	Product Number	Kit Number	Teeth	Insert
2.000	255E0200ARE6-W075R	255E-KIT-2.00-6-.75	3	RECH-63_
Face Mill Kits				
3.000	255F0300ARE6-125R	255F-KIT-3.00-6	4	RECH-63_
4.000	255F0400ARE6-150R	255F-KIT-4.00-6	5	RECH-63_

290 Kits



290E100A-KIT-1.00

Kit Contents:

- 1 Cutter
- 10 Inserts
- 2 Screws
- 1 Wrench
- Anti-Seize



CPEH-32.63--4W_



290F250A-KIT-0.75

End Mill Kits				
Diameter	Product Number	Kit Number	Teeth	Insert
1.000	290E0100ACP3-W100R	290E100A-KIT-1.00	2	CPEH-32.63-
1.000	290E0100BCP3-W100R	290E100B-KIT-1.00	2	CPEH-32.63-
1.000	290E0100CCP3-W100R	290E100C-KIT-1.00	2	CPEH-32.63-
1.000	290E0100DCP3-W125R	290E100D-KIT-1.25	2	CPEH-32.63-
1.000	290E0100ECP3-W125R	290E100E-KIT-1.25	2	CPEH-32.63-
1.250	290E0125ACP3-W100R	290E125A-KIT-1.00	3	CPEH-32.63-
1.250	290E0125BCP3-W125R	290E125B-KIT-1.25	3	CPEH-32.63-
1.250	290E0125DCP3-W125R	290E125D-KIT-1.25	3	CPEH-32.63-
1.500	290E0150ACP3-W100R	290E150A-KIT-1.00	4	CPEH-32.63-
1.500	290E0150ACP3-W125R	290E150A-KIT-1.25	4	CPEH-32.63-
1.500	290E0150BCP3-W125R	290E150B-KIT-1.25	4	CPEH-32.63-
1.500	290E0150DCP3-W125R	290E150D-KIT-1.25	4	CPEH-32.63-
1.500	290E0200ACP3-W125R	290E200A-KIT-1.25	5	CPEH-32.63-
1.500	290E0200CCP3-W200R	290E200C-KIT-2.00	5	CPEH-32.63-
1.500	290E0200ECP3-W200R	290E200E-KIT-2.00	5	CPEH-32.63-
Face Mill Kits				
2.000	290F0200ACP3-075R	290F200A-KIT-0.75	5	CPEH-32.63-
2.500	290F0250ACP3-075R	290F250A-KIT-0.75	6	CPEH-32.63-
3.000	290F0300ACP3-100R	290F300A-KIT-1.00	6	CPEH-32.63-
4.000	290F0400ACP3-150R	290F400A-KIT-1.50	8	CPEH-32.63-

355 Kits



355E150-KIT-A

Kit Contents:

- 1 Cutter
- 10 Inserts
- 5 Screws
- 1 Wrench
- Anti-Seize



RCCH-43_



355F250-KIT-A

End Mill Kits				
Diameter	Product Number	Kit Number	Teeth	Insert
1.250	355E0125ARC4-W100R	355E125-KIT-A	3	RCCH-43_
1.500	355E0150ARC4-W125R	355E150-KIT-A	3	RCCH-43_
1.500	355E0150BRC4-W125R	355E150-KIT-B	4	RCCH-43_
2.000	355E0200ARC4-W125R	355E200-KIT-A	4	RCCH-43_
2.000	355E0200BRC4-W125R	355E200-KIT-B	5	RCCH-43_
Face Mill Kits				
2.000	355F0200ARC4-075R	355F200-KIT-A	4	RCCH-43_
2.000	355F0200BRC4-075R	355F200-KIT-B	5	RCCH-43_
2.500	355F0250ARC4-100R	355F250-KIT-A	5	RCCH-43_
3.000	355F0300ARC4-100R	355F300-KIT-A	6	RCCH-43_
4.000	355F0400ARC4-150R	355F400-KIT-A	7	RCCH-43_
5.000	355F0500ARC4-150R	355F500-KIT-A	9	RCCH-43_
6.000	355F0600ARC4-200R	355F600-KIT-A	11	RCCH-43_

557 Kits

NOTE:
For 557 series machining parameters, see the master catalog for the information



BCCG-62-AL

Kit Contents:

- 1 Cutter
- 10 Inserts
- 1 Screw
- 1 Wrench
- Anti-Seize



557E50A-KIT

End Mill Kits					
Diameter	Product Number	Kit Number	Teeth	Insert Size	
.312	557E0031ABC2-S050RT	557E31A-KIT	1	BCEA-2.51 or BCEG-2.51 or BCCG-2.51	
.375	557E0037ABC3-S050R	557E37A-KIT	1	BCEA-31.5 or BCEG-31.5 or BCCG-31.5	
.375	557E0037BBC3-S050RT	557E37B-KIT	1	BCEA-31.5 or BCEG-31.5 or BCCG-31.5	
.500	557E0050ABC4-S050R	557E50A-KIT	1	BCEA-41.5 or BCEG-41.5 or BCCG-41.5	
.500	557E0050BBC4-S050R	557E50B-KIT	1	BCEA-41.5 or BCEG-41.5 or BCCG-41.5	
.500	557E0050CBC4-S050R	557E50C-KIT	1	BCEA-41.5 or BCEG-41.5 or BCCG-41.5	
.500	557E0050DBC4-S062RT	557E50D-KIT	1	BCEA-41.5 or BCEG-41.5 or BCCG-41.5	
.625	557E0062ABC5-S062R	557E62A-KIT	1	BCEA-52 or BCEG-52 or BCCG-52	
.625	557E0062BBC5-S062R	557E62B-KIT	1	BCEA-52 or BCEG-52 or BCCG-52	
.625	557E0062CBC5-S075RT	557E62C-KIT	1	BCEA-52 or BCEG-52 or BCCG-52	
.750	557E0075ABC6-S075R	557E75A-KIT	1	BCEA-62 or BCEG-62 or BCCG-62	
.750	557E0075BBC6-S075R	557E75B-KIT	1	BCEA-62 or BCEG-62 or BCCG-62	
.750	557E0075CBC6-S075R	557E75C-KIT	1	BCEA-62 or BCEG-62 or BCCG-62	
.750	557E0075DBC6-S100RT	557E75D-KIT	1	BCEA-62 or BCEG-62 or BCCG-62	
.750	557E0075EBC6-S075R	557E75E-KIT	1	BCEA-62 or BCEG-62 or BCCG-62	
.750	557E0075FBC6-S100RT	557E75F-KIT	1	BCEA-62 or BCEG-62 or BCCG-62	
1.000	557E0100ABC8-S100R	557E100A-KIT	1	BCEA-82.5 or BCEG-82.5 or BCCG-82.5	
1.000	557E0100BBC8-S100R	557E100B-KIT	1	BCEA-82.5 or BCEG-82.5 or BCCG-82.5	
1.000	557E0100CBC8-S125RT	557E100C-KIT	1	BCEA-82.5 or BCEG-82.5 or BCCG-82.5	
1.000	557E0100DBC8-S100R	557E100D-KIT	1	BCEA-82.5 or BCEG-82.5 or BCCG-82.5	
1.000	557E0100EBC8-S125RT	557E100E-KIT	1	BCEA-82.5 or BCEG-82.5 or BCCG-82.5	
1.250	557E0125ABC10-S125R	557E125A-KIT	1	BCEA-103 or BCEG-103 or BCCG-103	
1.250	557E0125BBC10-S125R	557E125B-KIT	1	BCEA-103 or BCEG-103 or BCCG-103	
1.250	557E0125CBC10-S150RT	557E125C-KIT	1	BCEA-103 or BCEG-103 or BCCG-103	

XRE45 Kits



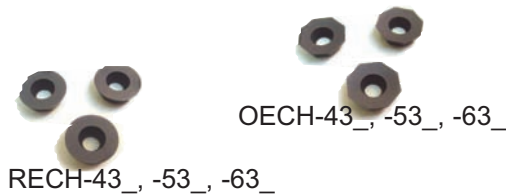
Kit Contents:

- 1 Cutter
- 10 Inserts
- 2 Screws
- 1 Wrench
- Anti-Seize



End Mill Kits					
Diameter	Product Number	Kit Number	Teeth	Insert	
1.250	XRE1.25PN45OE4RW.75	XRE-KIT-1.25-4-.75	2	RECH-43-10F	
1.250	XRE1.25PN45OE5RW.75	XRE-KIT-1.25-5-.75	2	OECH-534-10F	
1.250	XRE1.25PN45OE5RW1.00	XRE-KIT-1.25-5-1.00	2	RECH-53W520	
1.500	XRE1.50PN45OE4RW.75	XRE-KIT-1.50-4-.75	3	OECH-432-10F	
1.500	XRE1.50PN45OE5RW.75	XRE-KIT-1.50-5-.75	3	OECH-534A	
1.500	XRE1.50PN45OE5RW1.00	XRE-KIT-1.50-5-1.00	3	RECH-53-10F	
2.000	XRE2.00PN45OE4RW1.00	XRE-KIT-2.00-4-1.00	3	OECH-432W520	
2.000	XRE2.00PN45OE4RW1.25	XRE-KIT-2.00-4-1.25	3	OECH-432W520	
2.000	XRE2.00PN45OE5RW.75	XRE-KIT-2.00-5-.75	3	OECH-534-10F	
2.000	XRE2.00PN45OE5RW1.00	XRE-KIT-2.00-5-1.00	3	RECH-53W520	
2.000	XRE2.00PN45OE5RW1.25	XRE-KIT-2.00-5-1.25	3	OECH-534W520	
2.000	XRE2.00PN45OE6RW1.25	XRE-KIT-2.00-6-1.25	3	OECH-634-10F	
2.500	XRE2.50PN45OE4RW1.25	XRE-KIT-2.50-4-1.25	4	OECH-432-10F	
2.500	XRE2.50PN45OE5RW1.25	XRE-KIT-2.50-5-1.25	4	RECH-53-10F	
2.500	XRE2.50PN45OE6RW1.25	XRE-KIT-2.50-6-1.25	4	RECH-63W520	

XRF45 Kits



Kit Contents:

- 1 Cutter
- 10 Inserts *
- 2 Screws
- 1 Wrench
- Anti-Seize

* 3" dia cutter
& up have 20 inserts

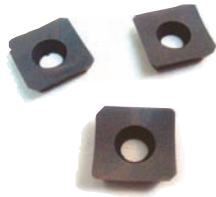


Face Mill Kits					
Diameter	Product Number	Kit Number	Teeth	Insert	
2.000	XRF2.00PN45OE4R.75	XRF-KIT-2.00-4	3	OECH-432W520	
2.000	XRF2.00PN45OE5R.75	XRF-KIT-2.00-5	3	OECH-534W520	
2.000	XRF2.00PN45OE6R.75	XRF-KIT-2.00-6	3	RECH-63W520	
2.500	XRF2.50PN45OE4R.75	XRF-KIT-2.50-4-.75	4	OECH-432-10F	
2.500	XRF2.50PN45OE4R1.00	XRF-KIT-2.50-4-1.00	4	OECH-432-10F	
2.500	XRF2.50PN45OE5R1.00	XRF-KIT-2.50-5	4	OECH-534-10F	
2.500	XRF2.50PN45OE6R1.00	XRF-KIT-2.50-6	4	OECH-634-10F	
3.000	XRF3.00PN45OE4R1.00	XRF-KIT-3.00-4	5	OECH-432W520	
3.000	XRF3.00PN45OE5R1.00	XRF-KIT-3.00-5	5	OECH-534-10F	
3.000	XRF3.00PN45OE6R1.00	XRF-KIT-3.00-6	5	OECH-634W520	
4.000	XRF4.00PN45OE4R1.50	XRF-KIT-4.00-4	6	OECH-432W520	
4.000	XRF4.00PN45OE5R1.50	XRF-KIT-4.00-5	6	OECH-534-10F	
4.000	XRF4.00PN45OE6R1.50	XRF-KIT-4.00-6	6	OECH-634W520	
5.000	XRF5.00PN45OE5R1.50	XRF-KIT-5.00-5	6	OECH-534-10F	
5.000	XRF5.00PN45OE6R1.50	XRF-KIT-5.00-6	6	RECH-63W520	
6.000	XRF6.00PN45OE6R2.00	XRF-KIT-6.00-6	7	OECH-634-10F	

XRE90 Kits



SECH-534_



LECH-534_

Kit Contents:

- 1 Cutter
- 10 Inserts
- 2 Screws
- 1 Wrench
- Anti-Seize



XRE90-KIT-1.50-5-.75

End Mill Kits				
Diameter	Product Number	Kit Number	Teeth	Insert
1.500	XRE1.50PN90SE5RW.75	XRE90-KIT-1.50-5-.75	2	SECH-534-10F
1.500	XRE1.50PN90SE5RW1.00	XRE90-KIT-1.50-5-1.00	2	SECH-534-10F
2.000	XRE2.00PN90SE5RW1.25	XRE90-KIT-2.00-5-1.25	3	SECH-534W520

XRF90 Kits



SECH-534_

* 3" dia cutter & up
have 20 inserts



LECH-534_

Kit Contents:

- 1 Cutter
- 10 Inserts *
- 2 Screws
- 1 Wrench
- Anti-Seize



XRF90-KIT-2.50-5

Face Mill Kits				
Diameter	Product Number	Kit Number	Teeth	Insert
2.000	XRF2.00PN90SE5R.75	XRF90-KIT-2.00-5	3	SECH-534-10F
2.500	XRF2.50PN90SE5R1.00	XRF90-KIT-2.50-5	4	SECH-534-10F
3.000	XRF3.00PN90SE5R1.00	XRF90-KIT-3.00-5	5	LECH-534-10F
4.000	XRF4.00PN90SE5R1.50	XRF90-KIT-4.00-5	6	SECH-534-10F
5.000	XRF5.00PN90SE5R1.50	XRF90-KIT-5.00-5	7	SECH-534-10F
6.000	XRF6.00PN90SE5R2.00	XRF90-KIT-6.00-5	7	SECH-534W520

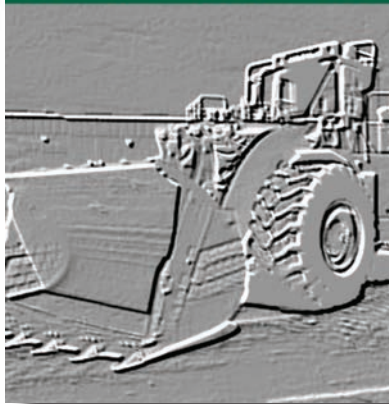


A series of horizontal lines for writing notes, starting from the top of the page and extending down to the footer area.

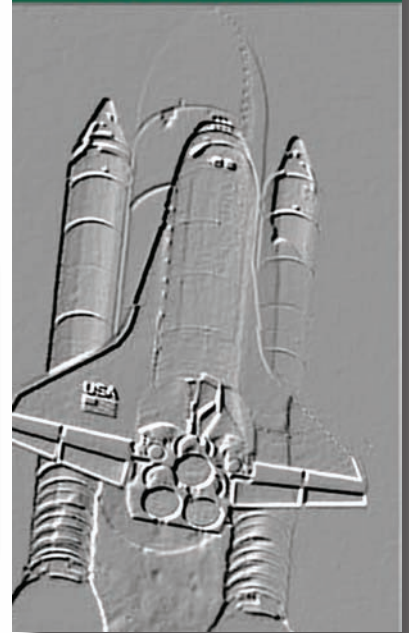


Industries

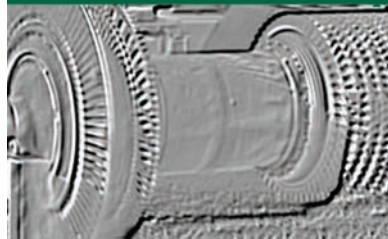
Heavy Equipment



Aerospace



Power



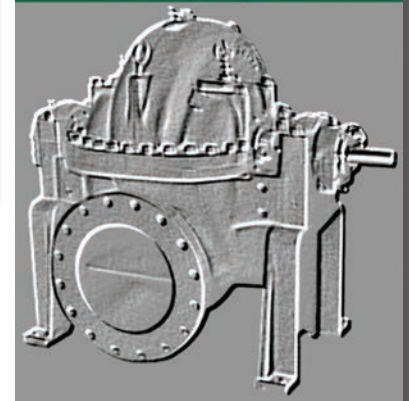
Automotive



Farming



Pumps



obtain catalog



Scan QR Code
for more info

Available from:

Specifications are subject to change without notice. No responsibility for errors and/or printing errors will be accepted.



AD1050-REV A

1-800-843-8376
www.lovejoytool.com