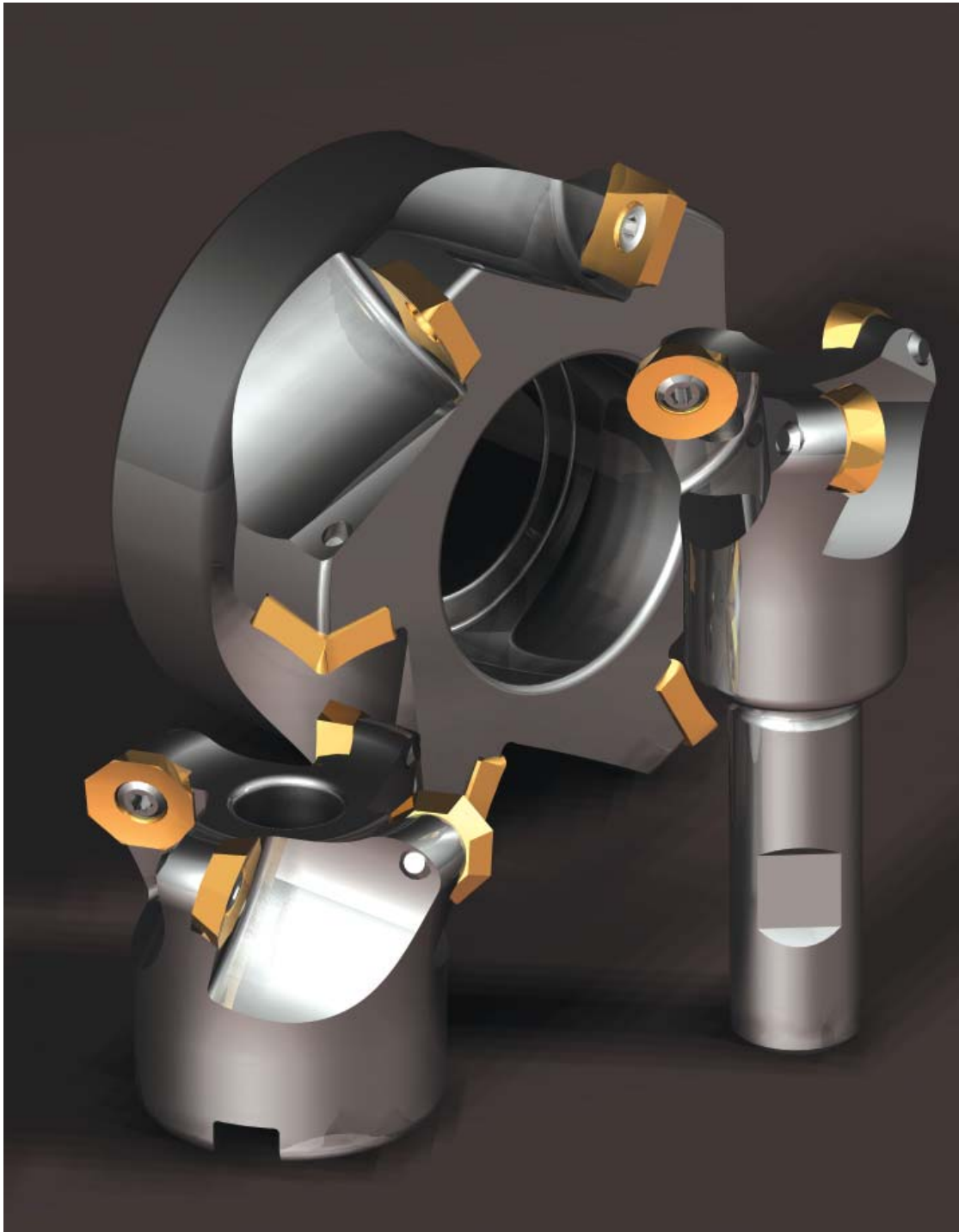


XR - General Purpose

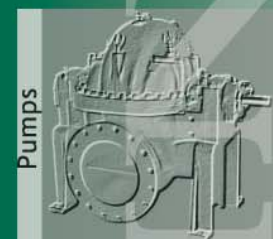
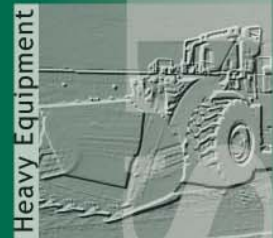
Milling Products



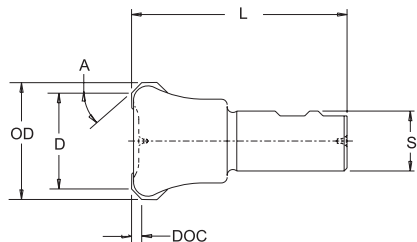
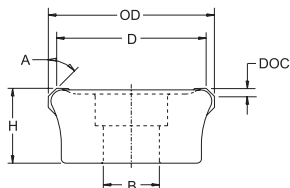
1-800-TheVermontMillPeople

1-800-843-8376

www.lovejoytool.com



XR45 - General Purpose Milling Tools



Promotional XR Kits Include:

- Choice of 10 Inserts with End Mill Kits
- Choice of 10 Inserts with Face Mill Kits through 2.50 diameter cutters
- Choice of 20 Inserts with Face Mill Kits 3.00 diameter to 6.00 diameter
- 1 XR Application Guide
- 1 Torx® driver 1557-TX20
- 1 Protective shop cloth
- 1 Anti-seize
- 1 Set of Extra locking screws

All XR cutters use Torx® screw #3605-0001-0023 and driver 1557-TX20

All XR End Mills have through Coolant

Geometry Specifications:

Axial: Positive **Radial:** Negative

'A' column dimensions reflect 45° lead with OECH insert and radii dimension with RECH insert

* Note: All pricing is subject to change

Product Number See Kit Order Number:	D	OD	B	H	A	DOC	Insert	Teeth	Cutter Price	Kit Order Number and Price *
FACE MILLS										
XRF2.00PN45OE5R.75	2.00	2.38	0.75	2.000	45° R.312	.173 .312	OECH-534 RECH-53	3	\$220	XRF-KIT-2.00-5 \$242
XRF2.50PN45OE5R1.00	2.50	2.88	1.00	2.000	45° R.312	.173 .312	OECH-534 RECH-53	4	\$275	XRF-KIT-2.50-5 \$308
XRF3.00PN45OE5R1.00	3.00	3.38	1.00	2.000	45° R.312	.173 .312	OECH-534 RECH-53	5	\$330	XRF-KIT-3.00-5 \$363
XRF4.00PN45OE5R1.50	4.00	4.38	1.50	2.000	45° R.312	.173 .312	OECH-534 RECH-53	6	\$440	XRF-KIT-4.00-5 \$495
XRF5.00PN45OE5R1.50	5.00	5.38	1.50	2.000	45° R.312	.173 .312	OECH-534 RECH-53	6	\$550	XRF-KIT-5.00-5 \$606
XRF2.00PN45OE6R.75	2.00	2.44	0.75	2.000	45° R.375	.208 .375	OECH-634 RECH-63	3	\$220	XRF-KIT-2.00-6 \$242
XRF2.50PN45OE6R1.00	2.50	2.94	1.00	2.000	45° R.375	.208 .375	OECH-634 RECH-63	4	\$275	XRF-KIT-2.50-6 \$308
XRF3.00PN45OE6R1.00	3.00	3.44	1.00	2.000	45° R.375	.208 .375	OECH-634 RECH-63	4	\$330	XRF-KIT-3.00-6 \$363
XRF4.00PN45OE6R1.50	4.00	4.44	1.50	2.000	45° R.375	.208 .375	OECH-634 RECH-63	5	\$440	XRF-KIT-4.00-6 \$495
XRF5.00PN45OE6R1.50	5.00	5.44	1.50	2.000	45° R.375	.208 .375	OECH-634 RECH-63	6	\$550	XRF-KIT-5.00-6 \$606
XRF6.00PN45OE6R2.00	6.00	6.44	2.00	2.000	45° R.375	.208 .375	OECH-634 RECH-63	7	\$661	XRF-KIT-6.00-6 \$716
END MILLS										
XRE1.25PN45OE5RW.75	1.25	1.62	0.75	4.25	45° R.312	.173 .312	OECH-534 RECH-53	2	\$152	XRE-KIT-1.25-5-.75 \$189
XRE1.50PN45OE5RW.75	1.50	1.88	0.75	4.25	45° R.312	.173 .312	OECH-534 RECH-53	3	\$180	XRE-KIT-1.50-5-.75 \$210
XRE2.00PN45OE5RW1.00	2.00	2.38	1.00	4.50	45° R.312	.173 .312	OECH-534 RECH-53	3	\$235	XRE-KIT-2.00-5-1.00 \$253
XRE1.25PN45OE5RW1.00	1.25	1.62	1.00	4.50	45° R.312	.173 .312	OECH-534 RECH-53	2	\$152	XRE-KIT-1.25-5-1.00 \$189
XRE1.50PN45OE5RW1.00	1.50	1.88	1.00	4.50	45° R.312	.173 .312	OECH-534 RECH-53	3	\$180	XRE-KIT-1.50-5-1.00 \$210
XRE2.00PN45OE5RW1.25	2.00	2.38	1.25	4.50	45° R.312	.173 .312	OECH-534 RECH-53	3	\$235	XRE-KIT-2.00-5-1.25 \$253
XRE2.50PN45OE5RW1.25	2.50	2.88	1.25	4.50	45° R.312	.173 .312	OECH-534 RECH-53	4	\$290	XRE-KIT-2.50-5-1.25 \$319
XRE2.00PN45OE6RW1.25	2.00	2.44	1.25	4.50	45° R.375	.208 .375	OECH-634 RECH-63	3	\$235	XRE-KIT-2.00-6-1.25 \$253
XRE2.50PN45OE6RW1.25	2.50	2.94	1.25	4.50	45° R.375	.208 .375	OECH-634 RECH-63	4	\$290	XRE-KIT-2.50-6-1.25 \$319

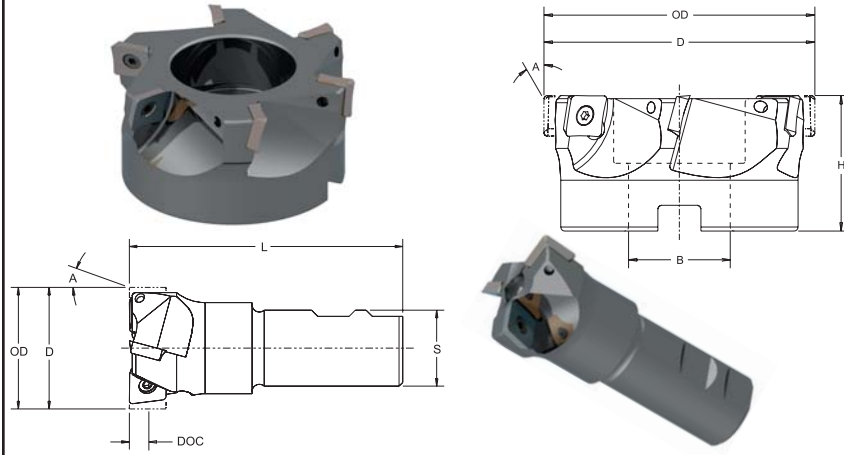
XR90 - General Purpose Milling Tools

Promotional XR 90 Kits Include:

- Choice of 10 Inserts with End Mill Kits
- Choice of 10 Inserts with Face Mill Kits through 2.50 diameter cutters
- Choice of 20 Inserts with Face Mill Kits 3.00 diameter to 6.00 diameter
- 1 XR Application Guide
- 1 Torx® driver 1557-TX20
- 1 Protective shop cloth
- 1 Anti-seize
- 1 Set of Extra locking screws

Geometry Specifications:

Axial: Positive **Radial:** Negative



XR 90 machines 90° shoulders

All XR cutters use Torx® screw #3605-0001-0023 and driver 1557-TX20

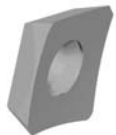
* Note: All pricing is subject to change

Product Number See Kit Order Number:	D	OD	B	H	A	DOC	Insert	Teeth	Cutter Price	Kit Order Number and Price *
FACE MILLS										
XRF2.00PN90SE5R.75	2.00	2.00	0.75	2.000	0°	.540	SECH-534 LECH-534	3	\$220	XRF90-KIT-2.00-5 \$242
XRF2.50PN90SE5R1.00	2.50	2.50	1.00	2.000	0°	.540	SECH-534 LECH-534	4	\$275	XRF90-KIT-2.50-5 \$308
XRF3.00PN90SE5R1.00	3.00	3.00	1.00	2.000	0°	.540	SECH-534 LECH-534	5	\$330	XRF90-KIT-3.00-5 \$363
XRF4.00PN90SE5R1.50	4.00	4.00	1.50	2.000	0°	.540	SECH-534 LECH-534	6	\$440	XRF90-KIT-4.00-5 \$495
XRF5.00PN90SE5R1.50	5.00	5.00	1.50	2.000	0°	.540	SECH-534 LECH-534	7	\$550	XRF90-KIT-5.00-5 \$592
XRF6.00PN90SE5R2.00	6.00	6.00	2.00	2.000	0°	.540	SECH-534 LECH-534	7	\$661	XRF90-KIT-6.00-5 \$716
Product Number See Kit Order Number:	D	OD	S	L	A	DOC	Insert	Teeth	Cutter Price	Kit Order Number and Price
END MILLS										
XRE1.50PN90SE5RW.75	1.50	1.50	0.75	4.50	0°	.540	SECH-534 LECH-534	2	\$180	XRE90-KIT-1.50-5-.75 \$247
XRE1.50PN90SE5RW1.00	1.50	1.50	1.00	4.50	0°	.540	SECH-534 LECH-534	2	\$180	XRE90-KIT-1.50-5-1.00 \$247
XRE2.00PN90SE5RW1.25	2.00	2.00	1.25	4.50	0°	.540	SECH-534 LECH-534	3	\$235	XRE90-KIT-2.00-5-1.25 \$304

XR 90 - Inserts

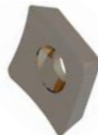
EMS ENGINEERED MACHINING SYSTEMS

LECH Type

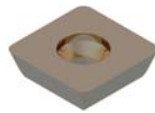


Dished 90° crown

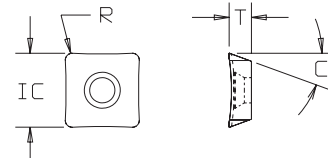
SECH Type



Dished not 90°



Flat 90°



* 'R' Corner Radii are also available ranging from 0.000 to 0.125

Insert Number	IC	T	R*	C	Geometry	Grades in Stock		
						586XRm	606jRm	908XRm
PCD Tipped & Uncoated Econo Wiper Insert Available								
SECH-534-10F	.625	.187	.062	23°	Dish	•		•
SECH-534	.625	.187	.062	23°	FLAT			•
SECH-534W520	.625	.187	.062	23°	FLAT w/Land	•		•
LECH-534-10F	.625	.187	.062	23°	Dished 2-Dex Crown	•		•

For Customer Service call 1-800-843-8376 LOVEJOY Tool Co., Inc.

255 Series - XR Style cutters with OD as NOMINAL cut dia. (see page 2 diagrams)

Product Number See Kit Order Number	D	OD	S	L	A	DOC	Insert	Teeth	Cutter Price	Kit Order Number and Price *
255E0200ARE6-W075R	1.25	2.00	0.75	4.25	R.375	.375 .208	RECH-63 OECH-63	3	\$220	255E-KIT-2.00-6-.75 \$253
Product Number See Kit Order Number	D	OD	B	H	A	DOC	Insert	Teeth	Cutter Price	Kit Order Number and Price
255F0300ARE6-100R	2.25	3.00	1.00	2.00	R.375	.375 .208	RECH-63 OECH-63	4	\$330	255F-KIT-3.00-6 \$363
255F0400ARE6-150R	3.25	4.00	1.50	2.00	R.375	.375 .208	RECH-63 OECH-63	5	\$440	255F-KIT-4.00-6 \$495

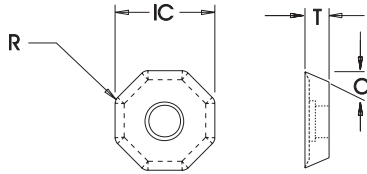
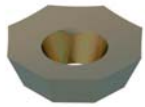
* Note: All pricing is subject to change

XR - Inserts

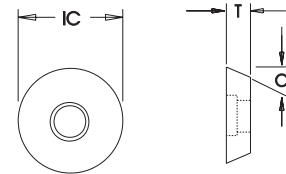
FMS ENGINEERED MACHINING SYSTEMS

High Velocity Design

OECH Type



RECH Type



Insert Number	IC	T	R	C	Geometry	Grades in Stock			
						586XRm	606jRm	908XRm	LTC-10
						C1-C4 K40-K01	C5-C8 P30-P01 M30-M10	C1-C2	C1-C4 K40-K01 M40
OECH-534-10F	.625	.187	.062	23°	+10° Dish	•	•	•	•
OECH-534W520	.625	.187	.062	23°	FLAT w/land		•		
OECH-634-10F	.750	.187	.062	23°	+10° Dish	•	•	•	•
OECH-634W520	.750	.187	.062	23°	FLAT w/land		•		
RECH-53-10F	.625	.187	N/A	23°	+10° Dish	•	•	•	•
RECH-53W520	.625	.187	N/A	23°	FLAT w/land		•		
RECH-63-10F	.750	.187	N/A	23°	+10° Dish	•	•	•	•
RECH-63W520	.750	.187	N/A	23°	FLAT w/land		•		

Insert Grade Descriptions for all Series

- **586XRm:** PVD TiAlN coated for full range machining of non-ferrous and stainless materials
- **606 jRm:** PVD TiAlN coated for full range machining of steels and stainless steel
- **908XRm:** Aluminum
- **LTC-10:** Uncoated heavy duty to general purpose non-ferrous applications

XR Advantages

- Higher Spindle Velocities
- Quick Index Locking Screws
- Multi-purpose Pos/Neg Geometry
- Improved Horsepower Utilization
- Low Cost per Cutting Edge
- Round or Octagon (XR45), Square Inserts (XR 90)
- High Velocity Balanced Holders
- Superior Insert Geometries
- Tuned Edge Preparations
- Improved Grades 586XRm and 606jRm
- Improved Surface Finishes
- Reduced Hardware Design



LOVEJOY Tool Company, Inc.

133 Main Street Springfield, Vermont 05156



© Copyright LOVEJOY Tool Co., 2008 All Rights Reserved

(800) 843-8376

AD1207

First Printing 03-10-2008