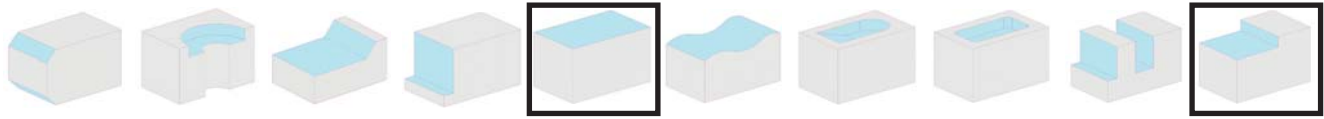
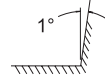


# 170 Series



Index

Specials

Inserts

General

Cavity Mold

Gray Iron

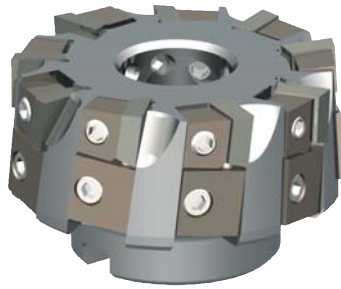
PCD / CBN

Slotters

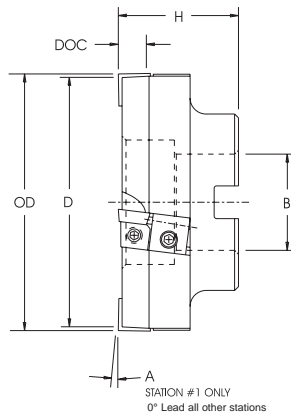
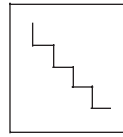
Technical Data

HOLDERS

## Double Positive Geometry



• Stepped Face Mill



7° Pos Axial  
Pos Radial  
1° Dish (Sta. 1)

• Light Duty Rough and Finish .080-.150 stock

### 170 Series Dimensional Specifications

Product Number	D	OD	A	B	H	DOC	Insert	Inserts per Set	Effective Sets	Teeth	Weight
170F0300ASP4-100R	2.96	3.00	1°	1.00	1.875	.080-.150	SPC-43__	3	3	9	2.50
170F0400ASP4-150R	3.96	4.00	1°	1.50	1.875	.080-.150	SPC-43__	3	4	12	4.50
170F0500ASP4-150R	4.96	5.00	1°	1.50	1.875	.080-.150	SPC-43__	3	5	15	8.00
170F0600ASP4-200R	5.96	6.00	1°	2.00	1.875	.080-.150	SPC-43__	3	6	18	12.00

LEFT HAND cutters also available

### 170 Series Setting Specifications for Stepped Configuration Tooling

Tool	Station 1 (H)	Station 2 (H)	Station 3 (H)
170F0300ASP4-100R	1.875	1.855	1.795
170F0400ASP4-150R	1.875	1.855	1.795
170F0500ASP4-150R	1.875	1.855	1.795
170F0600ASP4-200R	1.875	1.855	1.795

Insert I.C. x Thickness	Insert Pg. 61	Insert Pg. 51	Lock	Lock Screw	Anvoc	Lock Screw	Lock Screw Wrench
.500 x .188	SPC-43__	0502-2802-0001	1313R	1319	1314R	#8-32 x 5/8 SHCS	1557-PT8

### Machining Parameters

Material	SFPM	FPT	Primary	Secondary
Gray Cast Iron G2500, G3000, G3500	800-4000*	.003-.025	SPC-433W820 GR LTC-1200	SPC-433W820 GR LTC-1000

\* 3600 SFPM MAX. unless really well guarded...

- Higher feed rates, more effective teeth than a standard stepdex
- Double positive geometry accommodates a broad range of workpiece materials
- Dense (fine) pitch insert count makes 170 ideal for all gray cast iron machining applications
- Adjustable self-locating anvocs provide quick and easy general purpose insert location
- Adjustable ANVOC anvils can fine tune axial runout to tenths (.0001") type tolerances

GAX Light